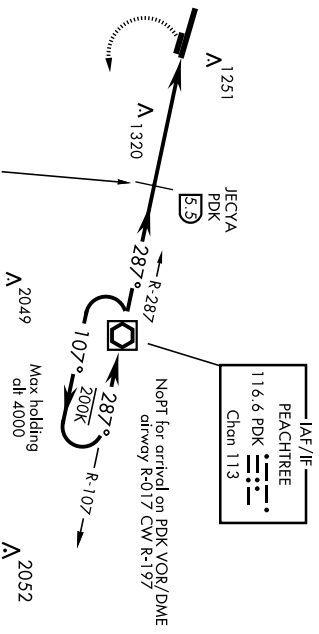


MARIETTA, GEORGIA

COPTER VOR RWY 29

1 5176

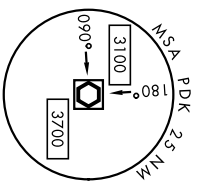
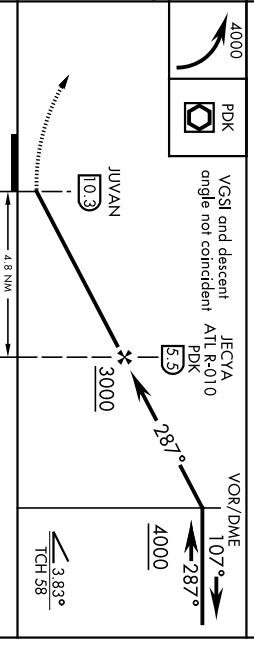
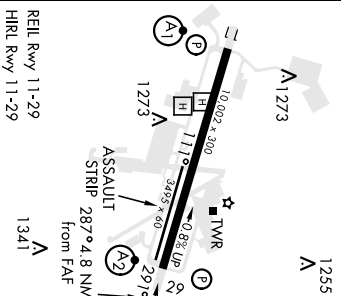
VOR/DME PDK 116.6 Chon 113	APCH CRS 287°	Rwy Idg 10,002 TDZE 1014 Arpt Elev 1068	AL-959 [USAF]	DOBBINS ARB (KMGE)
<p>▲</p>		SALS	<p>MISSED APPROACH: Climbing left turn to 4000 direct PDK VOR/DME and hold.</p>	
ATIS ★ 269.5	ATLANTA APP CON 121.0 268.7	DOBBINS TOWER ★ 120.75 370.875	GND CON 125.3 275.8	ASR



NOT FOR CIVIL USE

EMERG SAFE ALT 100 NM 7700

ELEV 1068	TDZE 1014
-----------	-----------



FAF to MAP 4.8 NM					
Knots	45	60	75	90	105
Min/Sec	6:24	4:48	3:50	3:12	2:44
CATEGORY	H-29				
COPTR	1580/20				566 (600-3%)

MARIETTA, GEORGIA DOBBINS ARB (KMGE)
 And# 6 05FEB15 33°55'N-84°31'W
COPTER VOR RWY 29

MARIETTA, GEORGIA

ILS or LOC Rwy 11

1 5176

LOC I-DR	APCH CRS	Rwy Idg	10,002
109.7	109°	TDZE	1068
		Appt Elev	1068

AL-959 [USAF]

DOBBINS ARB (KMGE)

▲ * When AIS Inop, increase RVR to 55 and vis to 1 mile.
 ** When AIS Inop, increase CAT AB RVR to 55 and vis to 1 mile, CAT CDE vis to 1½ miles.



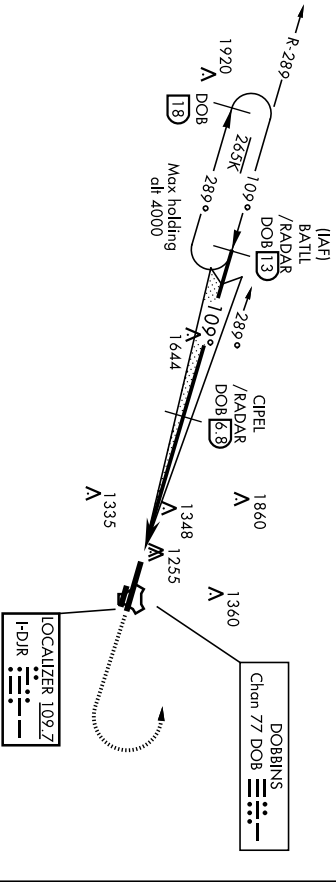
† MISSED APPROACH: Climb to 2000 track 109°, then climbing left turn to 3000, intercept the DOB R-289 to BATTIL and hold.

AIS *	ATLANTA APP CON	DOBBINS TOWER *
269.5	121.0 268.7	120.75 370.875

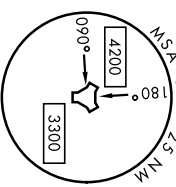
GND CON
125.3 275.8

ASR

*** Circling not authorized N of Rwy 11-29 for CAT DE aircraft.
 † Missed approach requires use of RNAV or ATC RADAR monitoring.

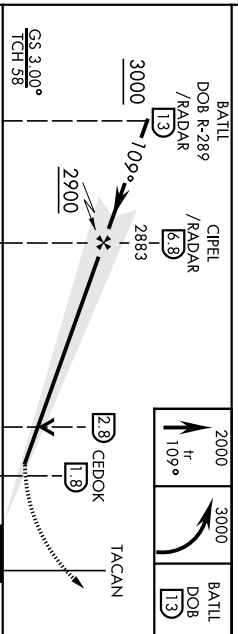


2049
A

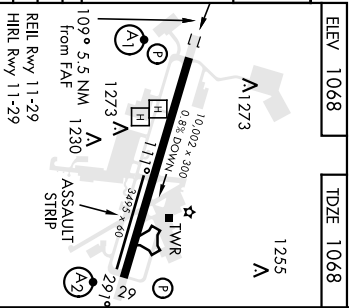


DME REQUIRED

EMERG SAFE ALT 100 NM 7700



CATEGORY	A	B	C	D	E
	1401/40	333	(400-¾)		



S-ILOC 11***	1600/40 532 (600-¾)	1600/55 532 (600-1)	1680-1½	1680-2	1680-2½
*** CIRCLING	1660-1 592 (600-1)		612 (700-1¾)	612 (700-2)	612 (700-2½)

Knots	60	90	120	150	180
	5:00	3:20	2:30	2:00	1:40

MARIETTA, GEORGIA
 33°55'N-84°31'W
 DOBBINS ARB (KMGE)

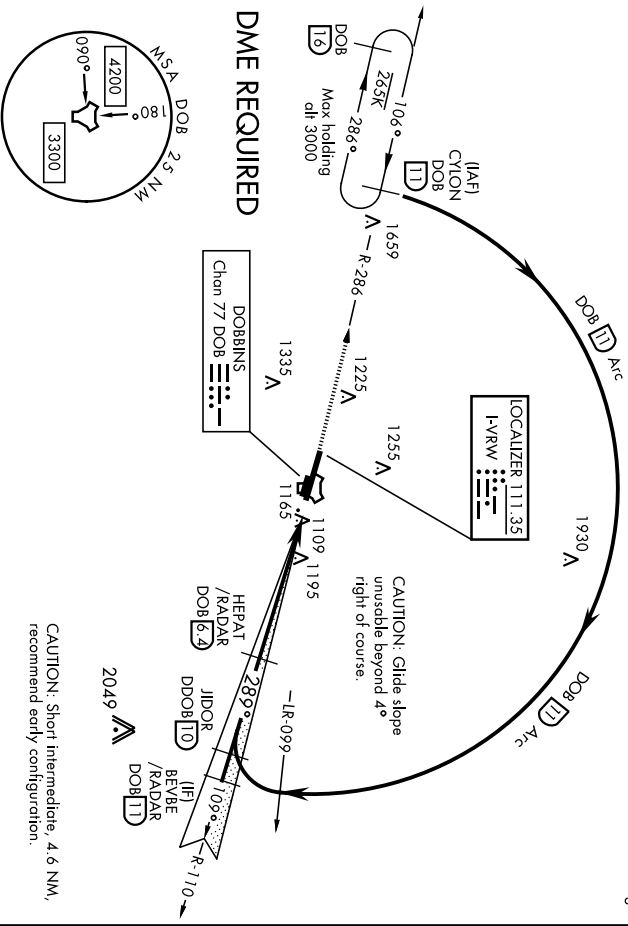
ILS or LOC Rwy 11

Amhd 4 05FEB15

LOC I-VRW 111.35	APCH CRS 289°	Rwy Idg 10,002 TDZE 1014 Arpt Elev 1068	AL-959 [USAF]	SALS 	† MISSED APPROACH: Climb to 3000 via DOB R-286 to CYNON and hold.
ATIS * 269.5	ATLANTA APP CON 121.0 268.7	DOBIBNS TOWER * 120.75 370.875	GND CON 125.3 275.8	ASR	DOBIBNS ARB (KMGE)

▼ * When ALS inop, increase CAT AB RVR to 55 and vis to 1 mile, CAT CDE vis to 1 3/8 miles.
 ** Circling not authorized N of Rwy 11-29 for CAT DE aircraft. Circling to assault strip not authorized.

† Missed approach requires use of RNAV or ATC RADAR monitoring.



EMERG SAFE ALT 100 NM NM 7700

CAUTION: Short Intermediate, 4.6 NM, recommend early configuration.

3000 DOB R-286	CYNON DOB (11)	JIDOR R-110 (10)	BEVBE R-110 (11) /RADAR	CYNON R-286 (11)	ELEV 1068	TDZE 1014										
<p>TACAN (L8) 2933 → 78.9° → 3000 → 4000 → 4000</p> <p>HIDIT (0.9) → 5.5 NM → 5.5 NM → 2933</p> <p>HEPAT (6.2) /RADAR</p> <p>GS 3.00°</p> <p>TCH 39</p> <p>Arc (11)</p> <p>4000</p>					<p>1255 A</p>											
<p>CATEGORY</p> <table border="1"> <tr> <th>A</th> <th>B</th> <th>C</th> <th>D</th> <th>E</th> </tr> <tr> <td>121.4/40</td> <td>200</td> <td>1200-3/4</td> <td></td> <td></td> </tr> </table>					A	B	C	D	E	121.4/40	200	1200-3/4			<p>1223 A</p>	
A	B	C	D	E												
121.4/40	200	1200-3/4														
<p>S-LOC 29* 1500/40 486 (500-3/4)</p>					<p>REIL Rwy 11-29</p> <p>HIRL Rwy 11-29</p> <p>ASSAULT STRIP 289° 6 NM from FAF</p>											
<p>** CIRCLING ** 1660-1 592 (600-1)</p>					<p>FAF to MAP 5.5 NM</p> <p>Knots 60 90 120 150 180</p> <p>Min:Sec 5:30 3:40 2:45 2:12 1:50</p>											

APCH CRS 109°	Rwy Idg TDZE Arpt Elev	10,002 1068 1068
-------------------------	------------------------------	---

AL-959 (USAF)

DOBBINS ARB (KMGE)

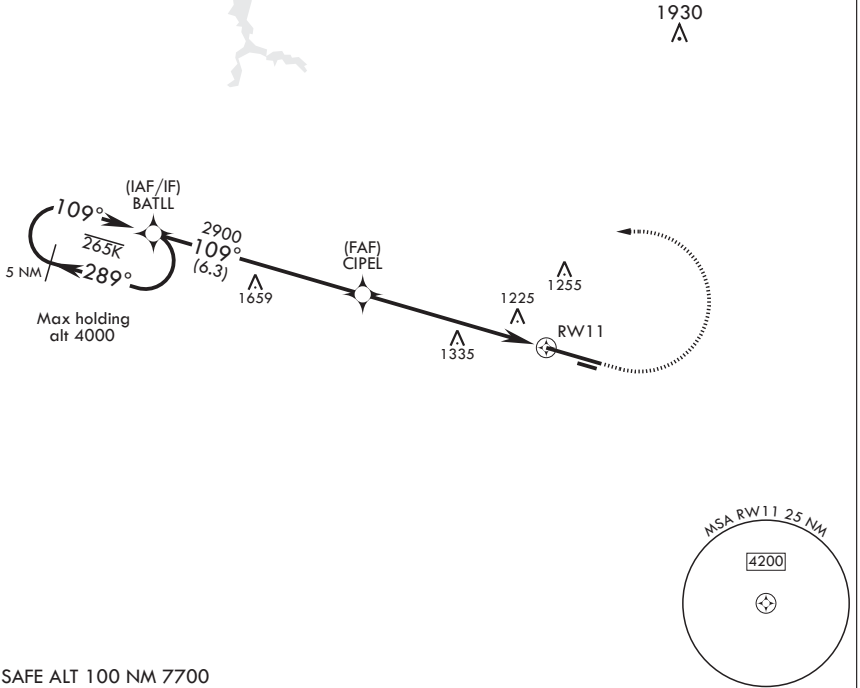
⚠ * When ALS inop, increase CAT AB RVR to 55 and vis to 1 mile, CAT CDE vis to 1 1/2 miles.
 ** Circling NA N of Rwy 11-29 for CAT DE aircraft. Circling to assault strip NA.

ALSF-1  † MISSED APPROACH: Climb to 2000 then climbing left turn to 3000 direct BATLL and hold.

ATIS 269.5	ATLANTA APP CON 121.0 268.7	TOWER 120.75 370.875	GND CON 125.3 275.8
----------------------	---------------------------------------	--------------------------------	-------------------------------

DME/DME RNP-0.3 NA

† Missed approach requires use of RNAV or ATC RADAR monitoring.



EMERG SAFE ALT 100 NM 7700

		ELEV 1068	TDZE 1068		
CATEGORY	A	B	C	D	E
LNAV MDA*	1600/40 532 (600-3/4)		1600/55	532	(600-1)
C CIRCLING**	1660-1	592 (600-1)	1680-1 3/4 612 (700-1 3/4)	1680-2 612 (700-2)	1680-2 1/4 612 (700-2 1/4)

REIL Rws 11, 29 HIRL all Rws

SE-4, 09 NOV 2017 to 07 DEC 2017

SE-4, 09 NOV 2017 to 07 DEC 2017

MARIETTA, GEORGIA

RNAV (GPS) RWY 29

APCH CRS	Rwy Idg	10,002
289°	TDZE	1014
	Arprt Elev	1068

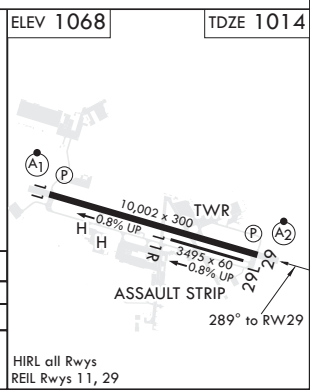
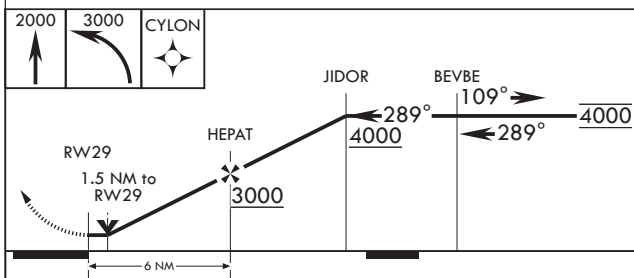
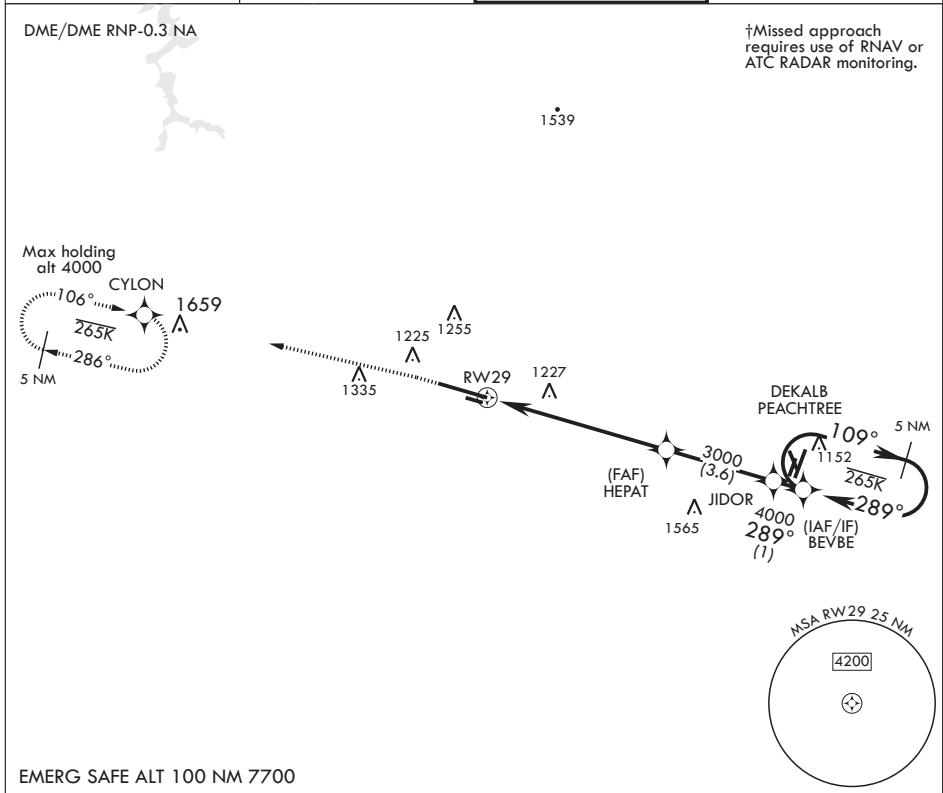
AL-959 (USAF)

DOBBINS ARB (KMGE)

⚠ * When ALS inop, increase CAT AB RVR to 55 and vis to 1 mile, CAT CDE vis to 1 1/2 miles.
 ** Circling not authorized N of Rwy 11-29 for CAT DE. Circling to assault strip not authorized.

SALS (A2) † MISSED APPROACH: Climb to 2000 then climbing left turn to 3000 direct CYLON and hold.

ATIS 269.5	ATLANTA APP CON 121.0 268.7	TOWER 120.75 370.875	GND CON 125.3 275.8
---------------	--------------------------------	-------------------------	------------------------



CATEGORY	A	B	C	D	E
LNAV MDA*	1540/40	526 (500-3/4)	1540-1 1/4	526	(500-1 1/4)
CIRCLING**	1660-1	592 (600-1)	1680-1 3/4 612 (700-1 3/4)	1680-2 612 (700-2)	1680-2 1/4 612 (700-2 1/4)

MARIETTA, GEORGIA

33°55'N - 84°31'W

DOBBINS ARB (KMGE)

Orig 22JUN17

RNAV (GPS) RWY 29

SE-4, 09 NOV 2017 to 07 DEC 2017

SE-4, 09 NOV 2017 to 07 DEC 2017

TACAN DOB Chan 77	APCH CRS 106°	Rwy Idg 10,002 TDZE 1068 Arpt Elev 1068
-------------------	---------------	---

AL-959 [USAF]

DOBBIENS ARB (KMGE)

✚ When ALS inop, increase CAT AB RVR to 55 and vis to 1 mile, CAT CDE vis to 1½ miles.

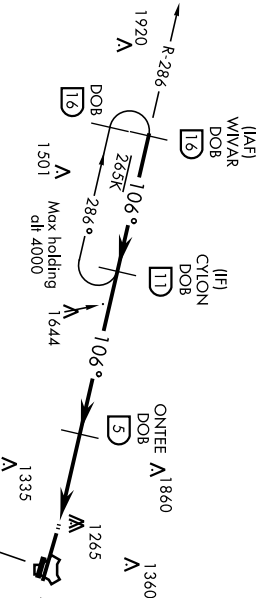
ALS-1	

† MISSED APPROACH: Climb to 2000 on track 106°, then climbing left turn to 3000, intercept DOB R-286 to CYLON and hold.

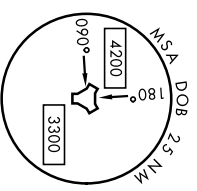
ATIS * 269.5	ATLANTA APP CON 121.0 268.7	DOBBIENS TOWER * 120.75 370.875	GND CON 125.3 275.8	ASR
-----------------	--------------------------------	------------------------------------	------------------------	-----

** Circling not authorized N of Rwy 11-29 for CAT D,E aircraft.
Circling to assault strip not authorized.

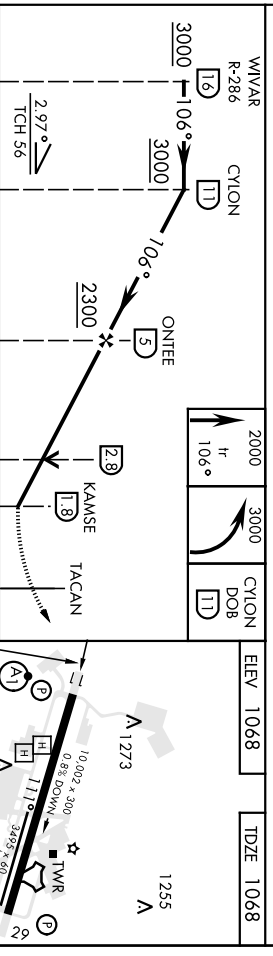
† Missed approach requires use of RNAV or ATC RADAR monitoring.



2049 A

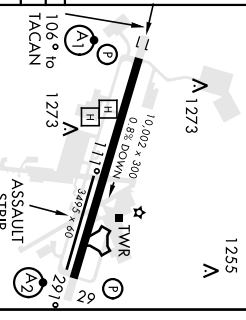


EMERG SAFE ALT 100 NM 7700



CATEGORY	A	B	C	D	E
S-11*	1600/40 532 (600-¾)	1600/55 532 (600-1)			

** CIRCLING	1660-1 592 (600-1)	1680-1¾ 612 (700-1¾)	1680-2 612 (700-2)	1680-2¼ 612 (700-2¼)
-------------	--------------------	----------------------	--------------------	----------------------



MARIETTA, GEORGIA
Amdt 5 05FEB15

DOBBIENS ARB (KMGE)
TACAN Rwy 11

MARIETTA, GEORGIA

TACAN RWY 29

15176

TACAN DOB Chan 77	APCH CRS 291°	Rwy Idg TDZE Appt Elev	10,002 1014 1068
----------------------	-------------------------	------------------------------	---

AL-959 [USAF]

DOBIBNS ARB (KMGE)

▼ * When AIS inop, increase CAT AB RVR to 55 and vis to 1 mile.
 ** Circling not authorized N of Rwy 11-29 for CAT DE aircraft. Circling to assault strip not authorized.

SAIS
A2

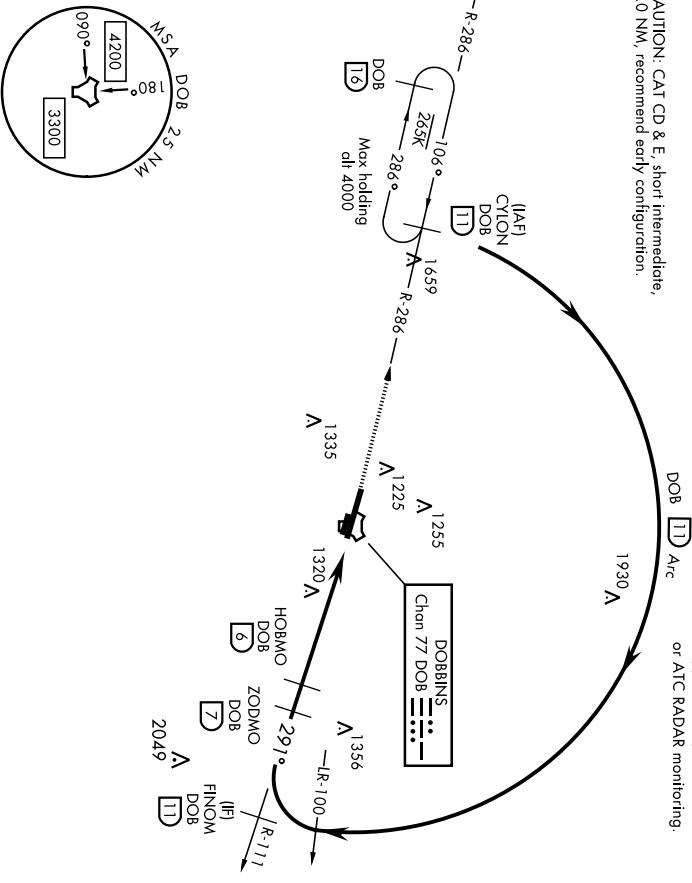
† MISSED APPROACH: Climb to 3000 via DOB R-286 to CYION and hold.

ATIS * 269.5	ATLANTA APP CON 121.0 268.7	DOBIBNS TOWER * 120.75 370.875
------------------------	---------------------------------------	--

GND CON 125.3 275.8	ASR
-------------------------------	-----

CAUTION: CAT CD & E, short intermediate, 5.0 NM, recommend early configuration.

† Missed approach requires use of RNAV or ATC RADAR monitoring.



SE-4, 09 NOV 2017 to 07 DEC 2017

SE-4, 09 NOV 2017 to 07 DEC 2017

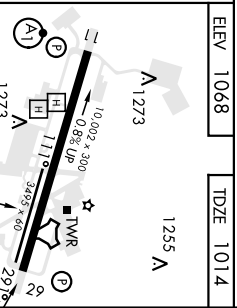
EMERG SAFE ALT 100 NM 7700

3000 DOB R-286 CYION (11)	VS1 and Descent Angle not coincident	FINOM R-111 CYION R-286
TACAN ACUWI (21) 9 5.5 NM 5.1 NM	HOBMO (6) ZODMO (7) 3200 3500 291° 3.61° TCH 58 Arc (11)	4000 4000

CATEGORY	A	B	C	D	E
----------	---	---	---	---	---

S-29 *	1380/40	566 (600-¾)	1580-1¾	566 (600-1¾)	
--------	---------	-------------	---------	--------------	--

CIRCLING **	1660-1	592 (600-1)	1680-1¾ 612 (700-1¾)	1680-2 612 (700-2)	1680-2¼ 612 (700-2¼)
-------------	--------	-------------	-------------------------	-----------------------	-------------------------



MARIETTA, GEORGIA

33°55'N-84°31'W

DOBIBNS ARB (KMGE)

Ampl 5 05FEB15

TACAN RWY 29