

WAAS CH 48839 W26A	APP CRS 262°	Rwy Idg 4007 TDZE 575 Apt Elev 585
--	------------------------	---

RNAV (GPS) RWY 26

CHILTON COUNTY (Ø2A)

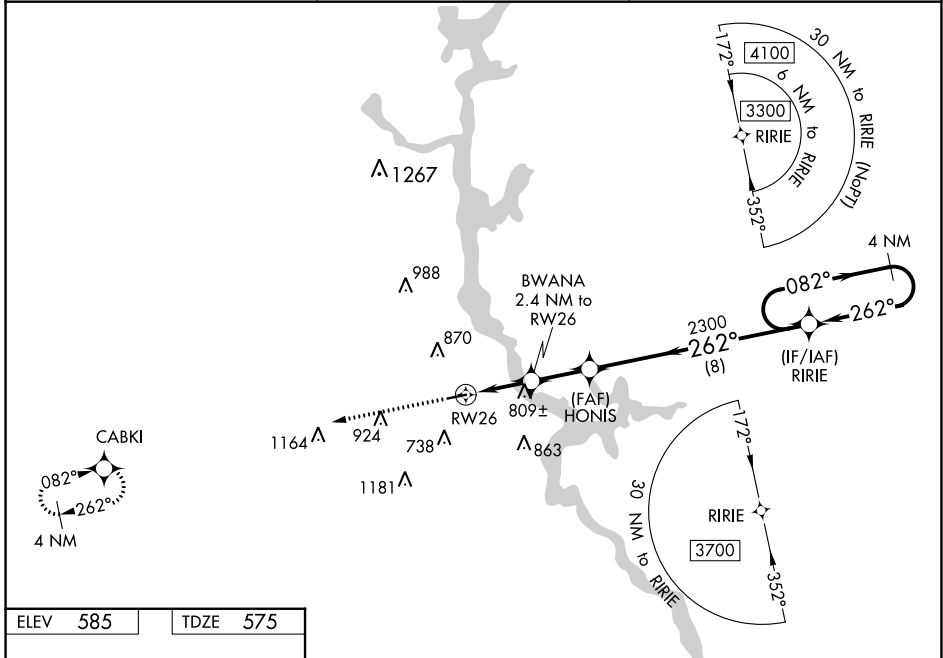
NA DME/DME RNP-0.3 NA. Procedure NA at night. Use Shelby County altimeter setting; when not received, use Merkel Field Sylacauga Muni altimeter setting and increase all MDA 20 feet and LP visibility Cat C/D ½ mile. Helicopter visibility reduction below 1 SM NA.

MISSED APPROACH: Climb to 3000 direct CABKI and hold.

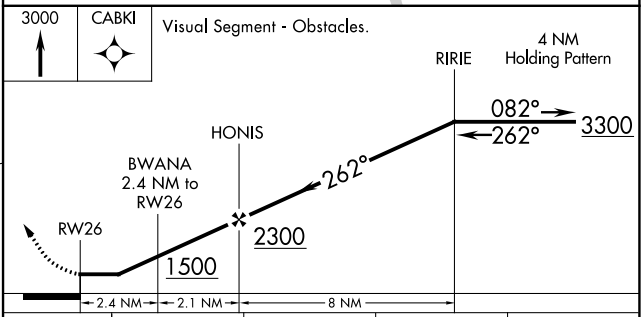
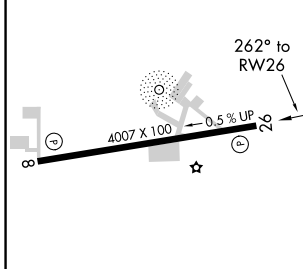
EET ASOS-3
134.325

MONTGOMERY APP CON ★
121.2 269.05

UNICOM
122.8 (CTAF) Ø



ELEV 585	TDZE 575
-----------------	-----------------



CATEGORY	A	B	C	D
LP MDA	1100-1	525 (600-1)	1100-1½	525 (600-1½)
LNAV MDA	1120-1	545 (600-1)	1120-1½	545 (600-1½)
CIRCLING	1260-1	675 (800-1)	1280-2 695 (700-2)	1600-3 1015 (1100-3)

MIRL Rwy 8-26 Ø
REIL Rwy 8 and 26

SE-4, 22 FEB 2024 to 21 MAR 2024

SE-4, 22 FEB 2024 to 21 MAR 2024

WAAS CH 86739 W08A	APP CRS 082°	Rwy ldg TDZE Apt Elev	4007 585 585
--	------------------------	-----------------------------	---

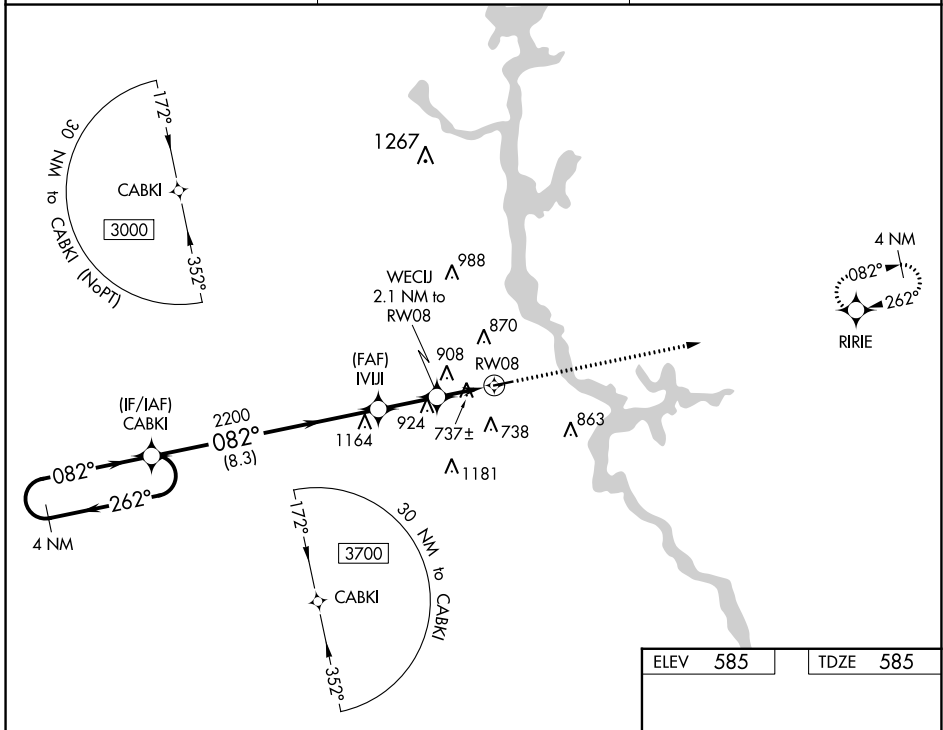
RNAV (GPS) RWY 8

CHILTON COUNTY (02A)

⚠ NA DME/DME RNP-0.3 NA. Helicopter visibility reduction below 1 SM NA. Use Shelby County altimeter setting; when not received, use Merkel Field Sylacauga Muni altimeter setting and increase all MDA 20 feet and LNAV visibility Cat C/D 1/2 mile. Procedure NA at night.

MISSED APPROACH: Climb to 3300 direct RIRIE and hold.

EET ASOS-3 134.325	MONTGOMERY APP CON ★ 121.2 269.05	UNICOM 122.8 (CTAF) 0
------------------------------	---	---------------------------------



SE-4, 22 FEB 2024 to 21 MAR 2024

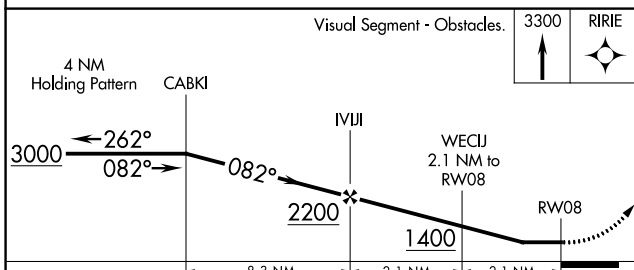
SE-4, 22 FEB 2024 to 21 MAR 2024

ELEV	585	TDZE	585
------	-----	------	-----

Visual Segment - Obstacles.

3300	RIRIE
------	-------

MIRL Rwy 8-26 0
REIL Rws 8 and 26



CATEGORY	A	B	C	D
LP MDA	1040-1	455 (500-1)	1040-1 $\frac{1}{8}$	455 (500-1 $\frac{1}{8}$)
LNAV MDA	1220-1	635 (700-1)	1220-1 $\frac{1}{4}$	635 (700-1 $\frac{1}{4}$)
C CIRCLING	1260-1	675 (700-1)	1280-2 695 (700-2)	1600-3 1015 (1100-3)