

GRIFFITH, INDIANA

AL-5431 (FAA)

23166

VORTAC CGT	APP CRS	Rwy Idg	4899
114.2	084°	TDZE	634
Chan 89		Apt Elev	634

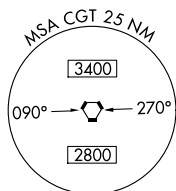
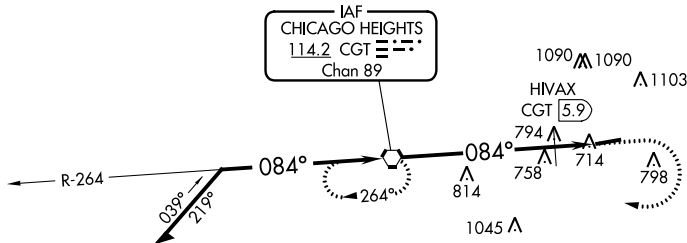
VOR RWY 8
GRIFFITH-MERRILLVILLE (05C)

NA Obtain local altimeter setting on CTAF; when not received, use Chicago Midway Intl altimeter setting and increase all MDAs 60 feet. Visibility reduction by helicopters NA. Procedure NA at night.

MISSED APPROACH: Climb to 1100 then climbing right turn to 2300 direct CGT VORTAC and hold.

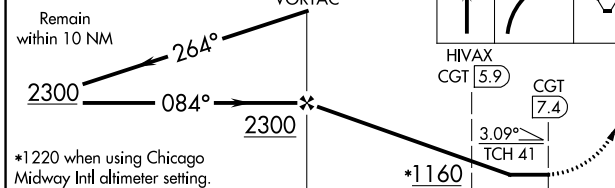
CHICAGO APP CON
133.1 285.6

UNICOM
123.0 (CTAF) 0



VGSI and descent angles not coincident (VGSI Angle 3.50/TCH 44).

Remain within 10 NM



*1220 when using Chicago Midway Intl altimeter setting.

ELEV 634	TDZE 634
----------	----------

FAF to MAP 7.4 NM					
Knots	60	90	120	150	180
Min:Sec	7:24	4:56	3:42	2:58	2:28

CATEGORY	A	B	C	D
S-8	1160-1	526 (600-1)		NA
CIRCLING	1200-1	566 (600-1)		NA
HIVAX FIX MINIMUMS				
S-8	1060-1	426 (500-1)		NA
CIRCLING	1200-1	566 (600-1)		NA

GRIFFITH, INDIANA
Amdt 8B 24MAY18

41°31'N-87°24'W

GRIFFITH-MERRILLVILLE (05C)
VOR RWY 8

EC-2, 22 FEB 2024 to 21 MAR 2024

EC-2, 22 FEB 2024 to 21 MAR 2024