

WAAS CH 40039 W26A	APP CRS 259°	Rwy Idg TDZE Apt Elev	7702 6193 6204
--	------------------------	-----------------------------	---

RNAV (GPS) RWY 26

MORIARTY MUNI (ØEØ)

RNP APCH.

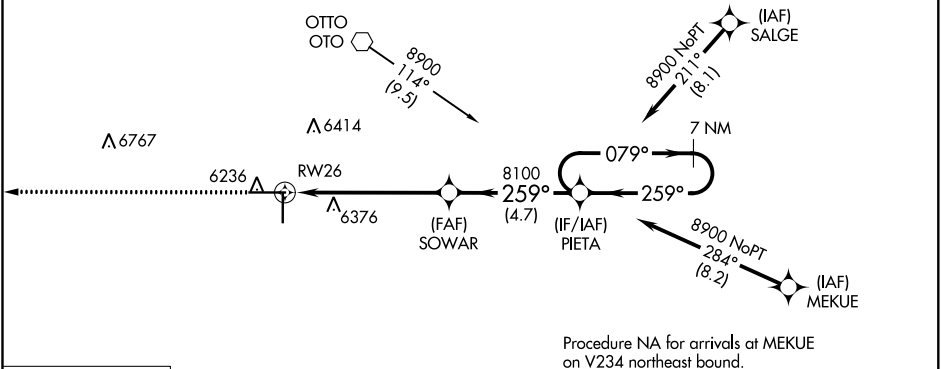
▼ For uncompensated Baro-VNAV systems, LNAV/VNAV NA below -27°C or above 54°C.
Circling Rwy 18 and 36 NA at night.

MISSED APPROACH: Climb to 9700 direct RIDSE and hold, continue climb-in-hold to 9700.

AWOS-3 118.05	ALBUQUERQUE CENTER 133.65 284.6	CTAF 122.9 Ø
-------------------------	---	-------------------------------

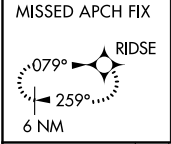
Procedure NA for arrivals at OTO VOR on V83 northbound, V12 westbound and V60 southwest bound.

Procedure NA for arrivals at SALGE on V12 eastbound.

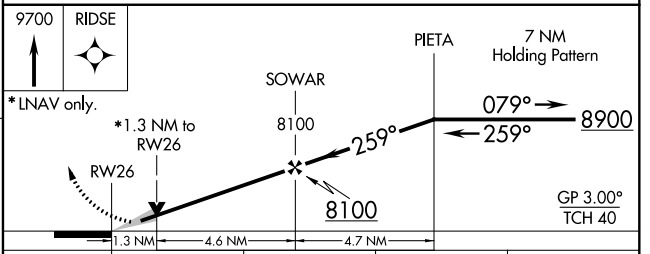
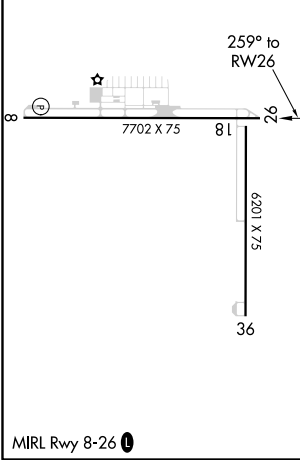


SW-1, 15 JUL 2021 to 12 AUG 2021

SW-1, 15 JUL 2021 to 12 AUG 2021



ELEV 6204	TDZE 6193
-----------	-----------



CATEGORY	A	B	C	D
LPV DA	6443-7/8	250 (300-7/8)		NA
LNAV/VNAV DA	6443-7/8	250 (300-7/8)		NA
LNAV MDA	6640-1	447 (500-1)	6640-1 3/8 447 (500-1 3/8)	NA
Ø CIRCLING	6660-1 456 (500-1)	6680-1 476 (500-1)	6780-1 1/2 576 (600-1 1/2)	NA

WAAS CH 86239 W08A	APP CRS 079°	Rwy Idg TDZE 6204 Apt Elev 6204
--	------------------------	---

RNAV (GPS) RWY 8

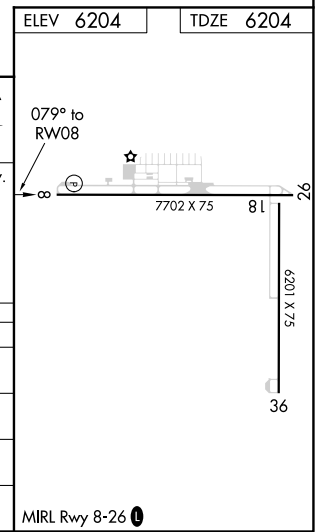
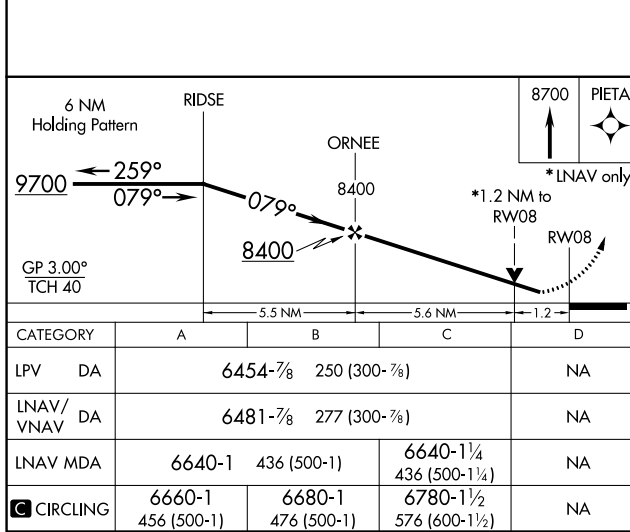
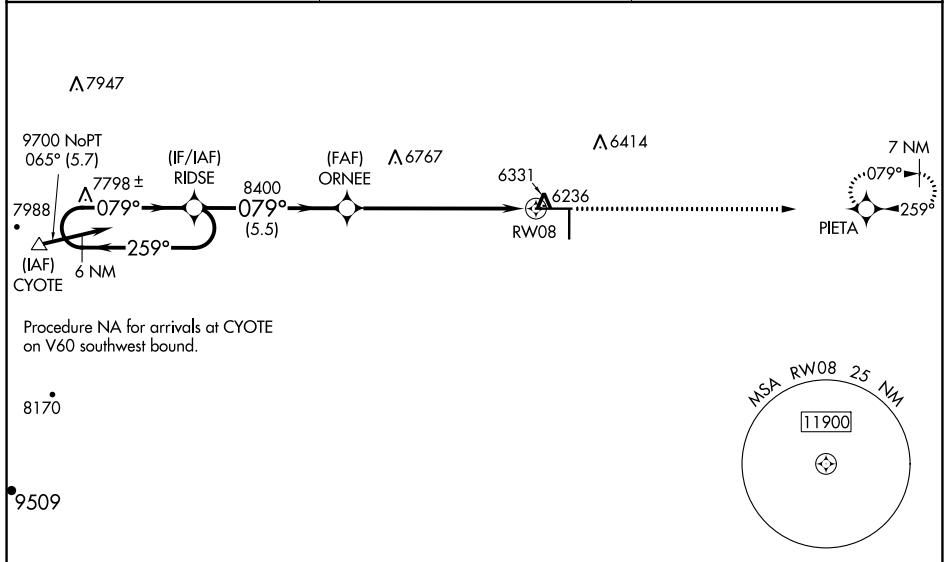
MORIARTY MUNI (E8)

RNP APCH.

▼ For uncompensated Baro-VNAV systems, LNAV/VNAV NA below -27°C or above 54°C.
Circling Rwy 18 and 36 NA at night.
Rwy 8 helicopter visibility reduction below ¾ SM NA.

MISSED APPROACH: Climb to 8700 direct PIETA and hold.

AWOS-3 118.05	ALBUQUERQUE CENTER 133.65 284.6	CTAF 122.9
-------------------------	---	----------------------



SW-1, 15 JUL 2021 to 12 AUG 2021

SW-1, 15 JUL 2021 to 12 AUG 2021