

WAAS CH <b>81936</b> <b>W01A</b>	APP CRS <b>007°</b>	Rwy Idg <b>4199</b> TDZE <b>492</b> Apt Elev <b>492</b>
--	------------------------	---

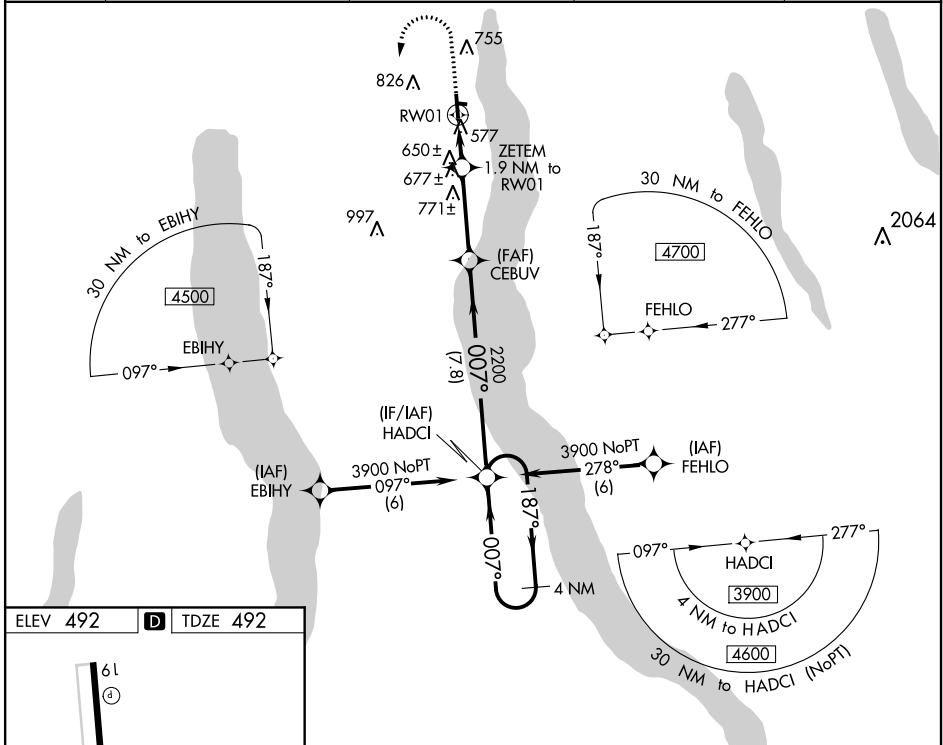
# RNAV (GPS) RWY 1

FINGER LAKES RGNL (ØG7)

**▽** For uncompensated Baro-VNAV systems, LNAV/VNAV NA below -15°C (5°F) or above 54°C (130°F). Baro-VNAV and VDP NA when using Syracuse altimeter setting. Rwy 1 helicopter visibility reduction below ¾ SM NA. DME/DME RNP-0.3 NA. When local altimeter setting not received, use Syracuse altimeter setting and increase all DA 86 feet and all visibility ¼ SM, increase all MDA 100 feet.

**△** NA MISSED APPROACH: Climb to 1000 then climbing left turn to 3900 direct HADCI and hold, continue climb-in-hold to 3900.

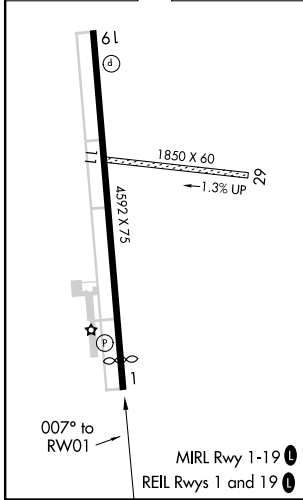
AWOS-3 <b>120.0</b>	SYRACUSE APP CON <b>126.125 269.125</b>	ROCHESTER APP CON <b>119.55 269.6</b> (W-NW)	ELMIRA APP CON ★ <b>124.3 257.8</b> (SW-SE)	UNICOM <b>122.8</b> (CTAF) <b>Ø</b>
------------------------	--	---	--	--



NE-2, 07 OCT 2021 to 04 NOV 2021

NE-2, 07 OCT 2021 to 04 NOV 2021

ELEV <b>492</b>	<b>D</b>	TDZE <b>492</b>
-----------------	----------	-----------------



1000	3900	HADCI	4 NM Holding Pattern
↑	↻	✦	187° → 3900
* LNAV only		ZETEM	GP 3.00°
* 1.2 NM to 1.9 NM to RW01		CEBUV 2200	TCH 40
RW01 RW01		007°	
1.2 NM		0.7 NM	3.3 NM
7.8 NM			
CATEGORY	A	B	C
LPV DA	742-7½	250 (300-7½)	NA
LNAV/VNAV DA	959-1½	467 (500-1½)	NA
LNAV MDA	900-1	408 (500-1)	NA
CIRCLING	980-1	1180-1	NA
	488 (500-1)	688 (700-1)	

WAAS CH <b>77636</b> <b>W19A</b>	APP CRS <b>187°</b>	Rwy Idg <b>4292</b> TDZE <b>491</b> Apt Elev <b>492</b>
--	------------------------	---

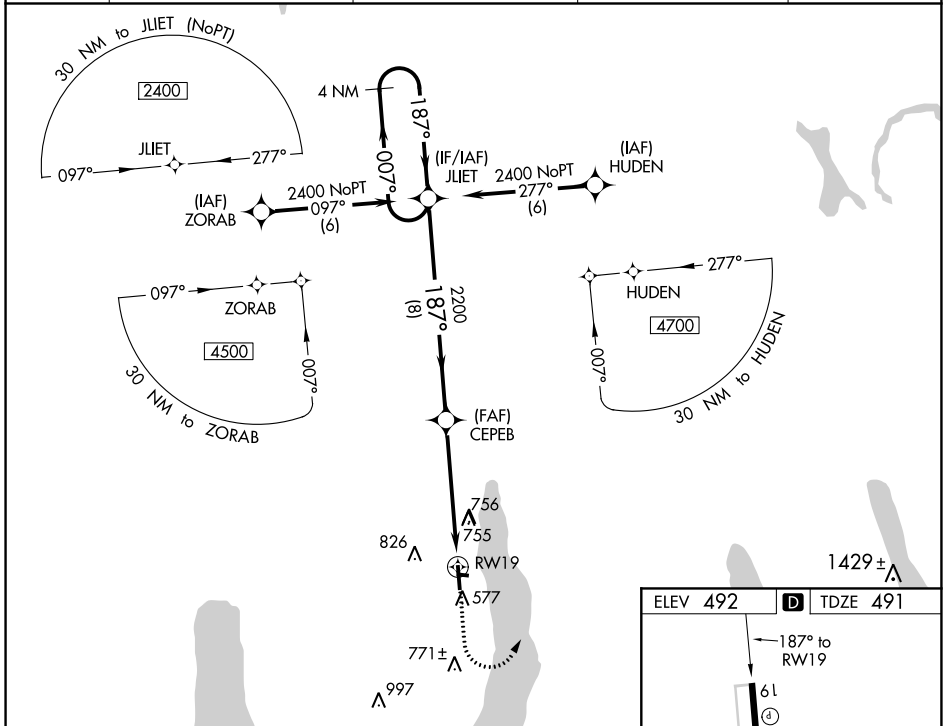
# RNAV (GPS) RWY 19

FINGER LAKES RGNL (ØG7)

**▽** **Δ** NA  
For uncompensated Baro-VNAV systems, LNAV/VNAV NA below -15°C (5°F) or above 54°C (130°F). Baro-VNAV and VDP NA when using Syracuse altimeter setting. Rwy 19 helicopter visibility reduction below ¾ SM NA. DME/DME RNP-0.3 NA. When local altimeter setting not received, use Syracuse altimeter setting and increase all LPV DA to 856 feet, LNAV/VNAV DA to 1226 feet and all MDA 100 feet; increase LPV all Cats visibility ¼ SM and LNAV/VNAV all Cats visibility ½ SM.

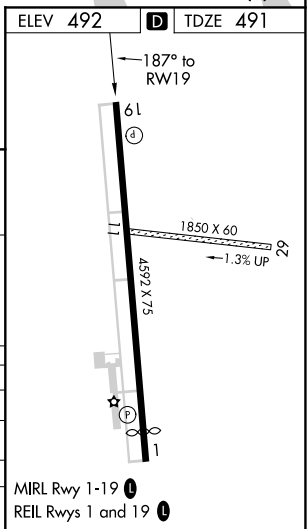
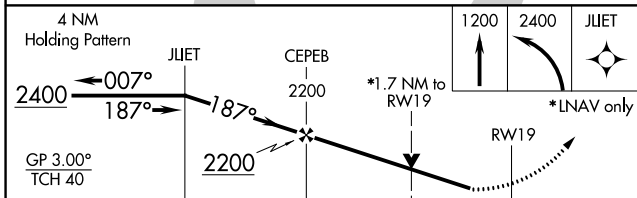
**MISSED APPROACH:**  
Climb to 1200 then climbing left turn to 2400 direct JLIET and hold.

AWOS-3 <b>120.0</b>	SYRACUSE APP CON <b>126.125 269.125</b>	ROCHESTER APP CON <b>119.55 269.6 (W-NW)</b>	ELMIRA APP CON * <b>124.3 257.8 (SW-SE)</b>	UNICOM <b>122.8 (CTAF) Ø</b>
------------------------	--	---	--	---------------------------------



NE-2, 07 OCT 2021 to 04 NOV 2021

NE-2, 07 OCT 2021 to 04 NOV 2021



CATEGORY	A	B	C	D
LPV DA	770-1	279 (300-1)		NA
LNAV/VNAV DA	1140-2½	649 (700-2½)		NA
LNAV MDA	1060-1	569 (600-1)		NA
<b>C</b> CIRCLING	1060-1 568 (600-1)	1180-1 688 (700-1)		NA