

WAAS CH <b>90222</b> <b>W03A</b>	APP CRS <b>032°</b>	Rwy Idg TDZE Apt Elev	<b>4000</b> <b>756</b> <b>756</b>
--	------------------------	-----------------------------	---

# RNAV (GPS) RWY 3

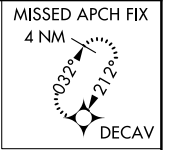
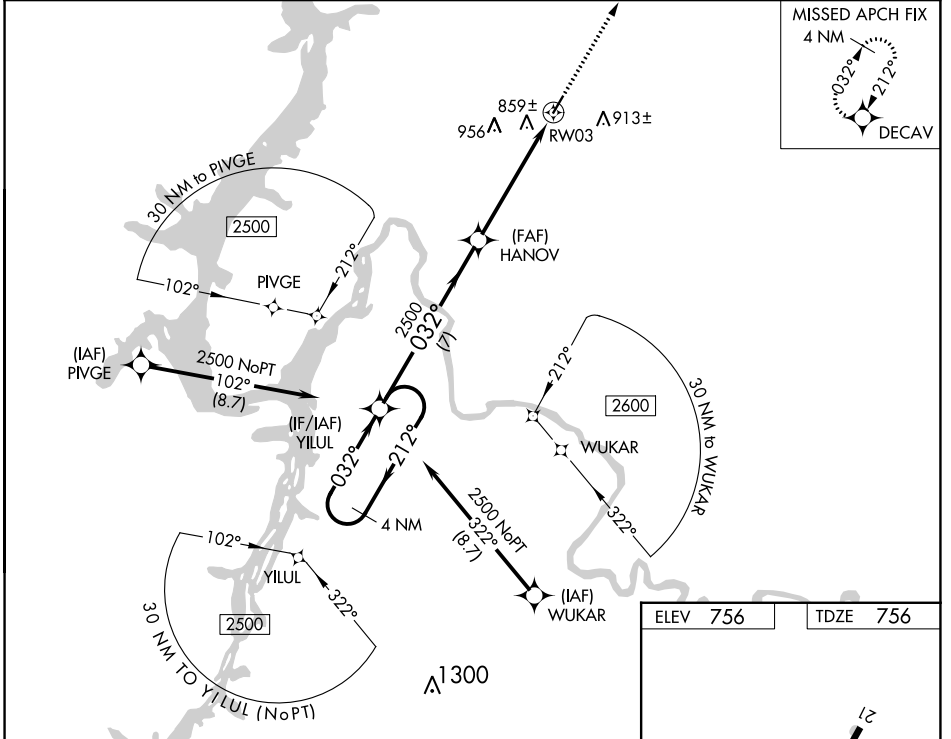
HUMPHREYS COUNTY (ØM5)

RNP APCH.

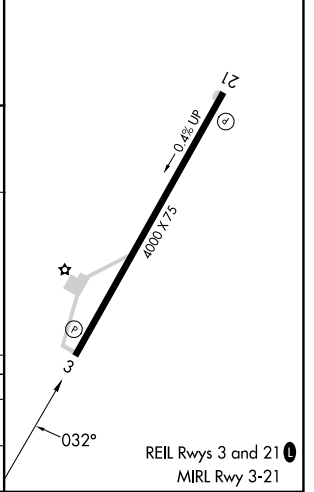
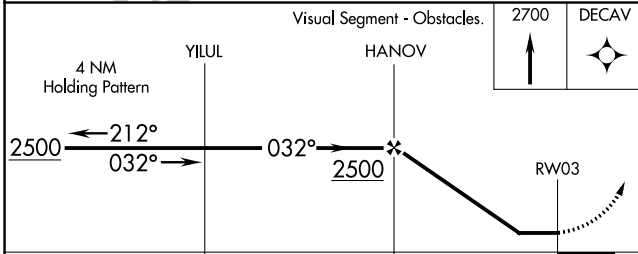
**▽** When local altimeter setting not received, use Nashville Intl altimeter setting and increase all MDA 160 feet; increase LP Cat C and D visibility 3/8 mile, LNAV Cat C and D visibility 1/2 mile. Procedure NA at night. Rwy 3 helicopter visibility reduction below 1 SM NA.

**▲ NA** MISSED APPROACH: Climb to 2700 direct DECAV and hold.

MEMPHIS CENTER <b>125.85 379.25</b>	UNICOM <b>122.8 (CTAF) 0</b>
--	---------------------------------



ELEV 756	TDZE 756
----------	----------



CATEGORY	A	B	C	D
LP MDA		1100-1	344 (400-1)	
LNAV MDA		1120-1	364 (400-1)	

SE-1, 22 FEB 2024 to 21 MAR 2024

SE-1, 22 FEB 2024 to 21 MAR 2024