

HUDSON, NEW YORK

AL-6204 (FAA)

18200

NDB-A

COLUMBIA COUNTY (1B1)

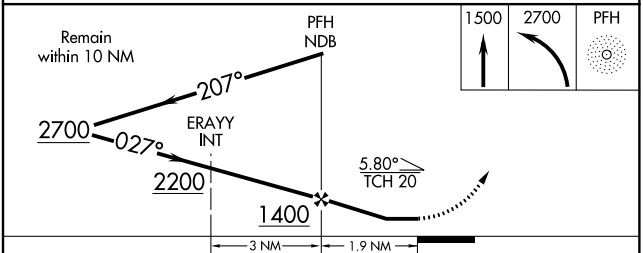
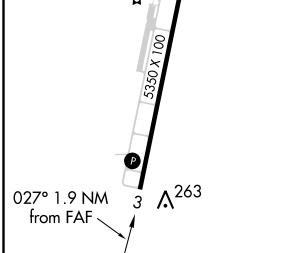
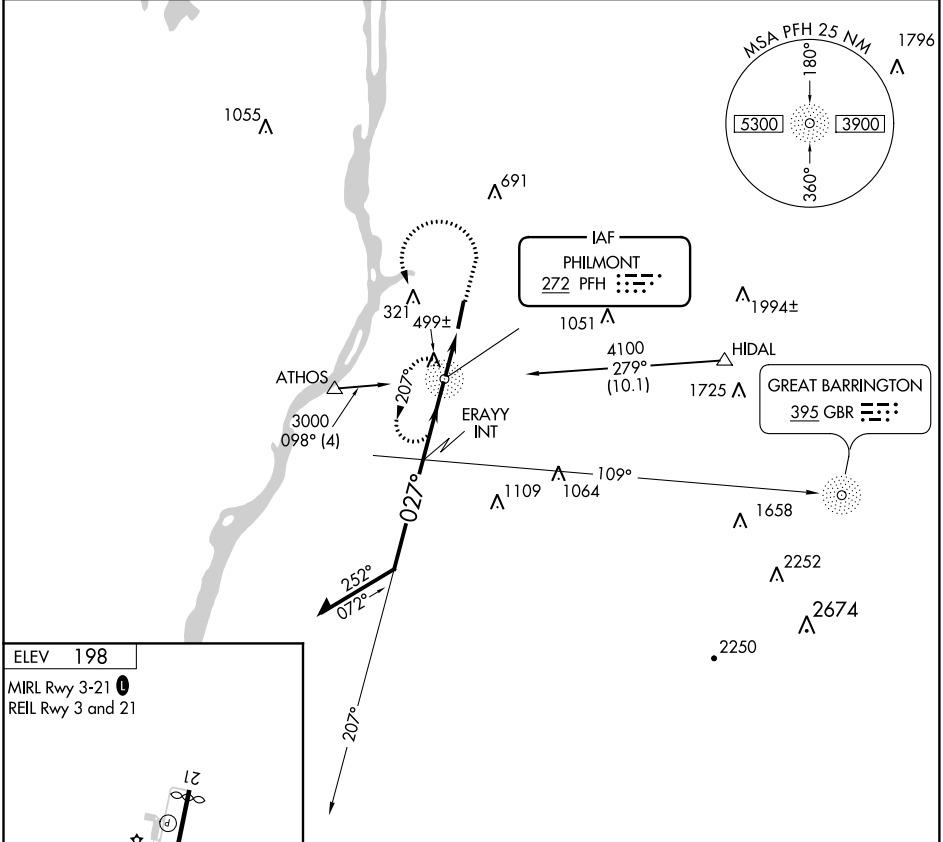
NDB PFH <b>272</b>	APP CRS <b>027°</b>	Rwy Idg TDZE Apt Elev	N/A N/A <b>198</b>
-----------------------	------------------------	--------------------------	--------------------------

**▼** Helicopter visibility reduction below 3/4 SM NA. When local altimeter setting not received, use Albany altimeter setting and increase all MDA 80 feet, increase Cat C visibility 1/2 mile and Cat D visibility 1/4 mile.

**▲ NA**

**MISSED APPROACH:** Climb to 1500 then climbing left turn to 2700 direct PFH NDB and hold.

AWOS-3 <b>133.525</b>	ALBANY APP CON <b>132.825 307.2</b>	UNICOM <b>123.05 (CTAF)</b>
--------------------------	--	--------------------------------



FAF to MAP 1.9 NM					
Knots	60	90	120	150	180
Min:Sec	1:54	1:16	0:57	0:46	0:38
CATEGORY	A	B	C	D	
CIRCLING	800-1 602 (700-1)	820-1 622 (700-1)	860-1 3/4 662 (700-1 3/4)	920-2 1/4 722 (800-2 1/4)	

HUDSON, NEW YORK

Amdt 4B 17SEP15

42°17'N - 73°43'W

COLUMBIA COUNTY (1B1)

NDB-A

NE-2, 11 OCT 2018 to 08 NOV 2018

NE-2, 11 OCT 2018 to 08 NOV 2018

WAAS CH <b>40215</b> W21A	APP CRS <b>205°</b>	Rwy Idg 5190
		TDZE 194
		Apt Elev 198

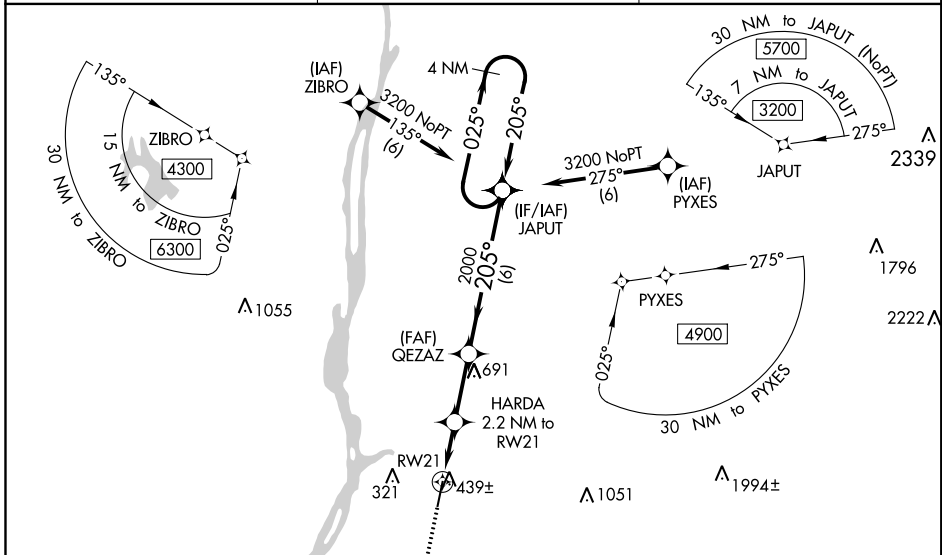
# RNAV (GPS) RWY 21

COLUMBIA COUNTY (1B1)

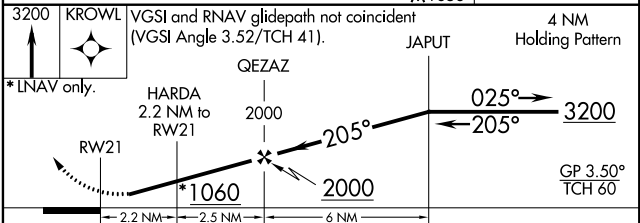
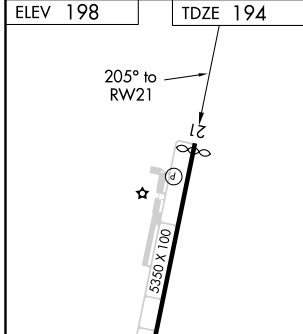
**Baro-VNAV NA** when using Albany altimeter setting. For uncompensated Baro-VNAV systems, LNAV/VNAV NA below -15°C (5°F) or above 14°C (58°F). Rwy 21 helicopter visibility reduction below 1 SM NA. DME/DME RNP -0.3 NA. Straight-In Rwy 21 and Circling Rwy 21 NA at night. When local altimeter setting not received, use Albany altimeter setting and increase LPV DA to 638 feet and visibility to 1 3/8 SM all Cats, LNAV/VNAV DA to 709 feet and visibility to 1 3/8 SM all Cats; increase all MDA 80 feet, LNAV Cat C/D visibility to 1 3/4 SM, Circling Cat C to 2 1/4 SM, and Cat D to 3 SM.

**MISSED APPROACH:** Climb to 3200 direct KROWL and hold, continue-in-hold to 3200.

AWOS-3 <b>133.525</b>	ALBANY APP CON <b>132.825 307.2</b>	UNICOM <b>123.05 (CTAF)</b>
--------------------------	--	--------------------------------



ELEV 198	TDZE 194
----------	----------



CATEGORY	A	B	C	D
LPV DA		562-1	368 (400-1)	
LNAV/VNAV DA		633-1 1/4		439 (500-1 1/4)
LNAV MDA	700-1	506 (600-1)		700-1 3/8 506 (600-1 3/8)
<b>C</b> CIRCLING	740-1 542 (600-1)	860-1 662 (700-1)	860-1 3/4 662 (700-1 3/4)	1020-2 3/4 822 (900-2 3/4)

MIRL Rwy 3-21  
REIL Rwy 3 and 21

NE-2, 11 OCT 2018 to 08 NOV 2018

NE-2, 11 OCT 2018 to 08 NOV 2018

WAAS CH <b>77715</b> W03A	APP CRS <b>025°</b>	Rwy Idg <b>5350</b> TDZE <b>198</b> Apt Elev <b>198</b>
---------------------------------	------------------------	---

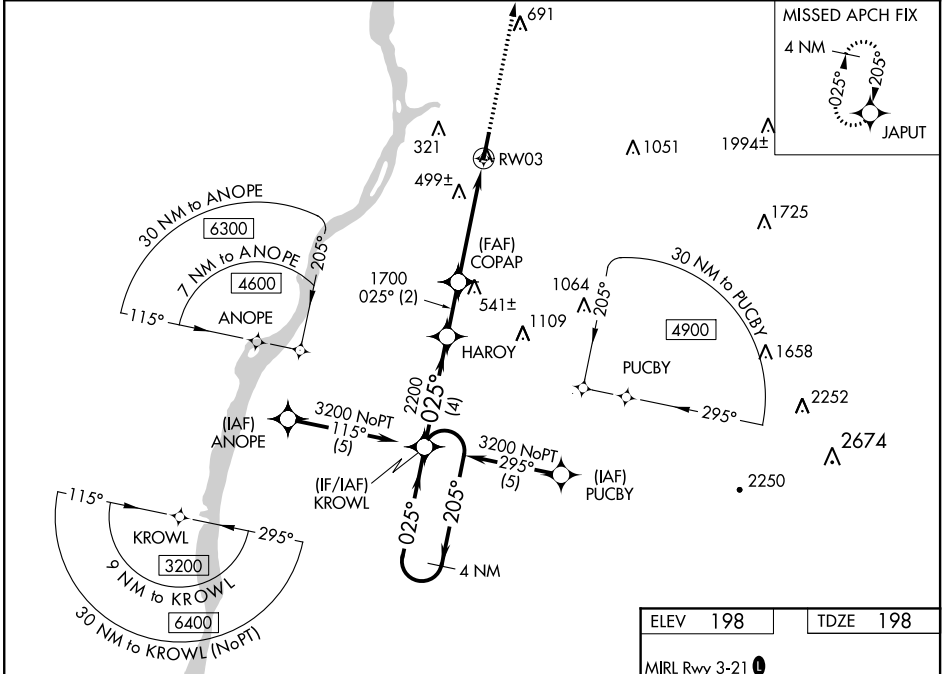
# RNAV (GPS) RWY 3

COLUMBIA COUNTY (1B1)

**NA** Baro-VNAV NA when using Albany altimeter setting. For uncompensated Baro-VNAV systems, LNAV/VNAV NA below -15°C (5°F) or above 48°C (118°F). DME/DME RNP-0.3 NA. Helicopter visibility reduction below ¼ SM NA. When local altimeter setting is not received, use Albany altimeter setting and increase all DA 76 feet and all MDA 80 feet, increase LPV all Cats, LNAV/VNAV all Cats, LNAV Cats C and D, and Circling Cat D visibility ¼ mile, and Circling Cat C visibility ½ mile.

**MISSED APPROACH:** Climb to 3200 direct JAPUT and hold, continue climb-in-hold to 3200.

AWOS-3 <b>133.525</b>	ALBANY APP CON <b>132.825 307.2</b>	UNICOM <b>123.05 (CTAF)</b>
--------------------------	--	--------------------------------

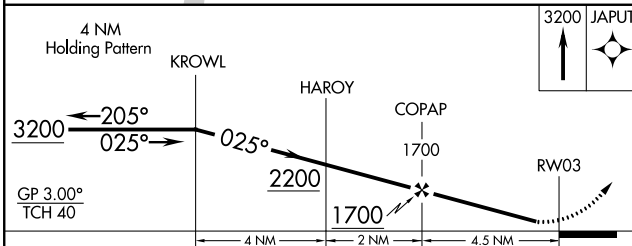


NE-2, 11 OCT 2018 to 08 NOV 2018

NE-2, 11 OCT 2018 to 08 NOV 2018

ELEV <b>198</b>	TDZE <b>198</b>
-----------------	-----------------

MIRL Rwy 3-21  
REL Rwy 3 and 21



CATEGORY	A	B	C	D
LPV DA		500-1	302 (400-1)	
LNAV/ VNAV DA		842-2¼	644 (700-2¼)	
LNAV MDA	760-1	562 (600-1)	760-1½ 562 (600-1½)	760-1¾ 562 (600-1¾)
CIRCLING	760-1 562 (600-1)	820-1 622 (700-1)	860-1¾ 662 (700-1¾)	920-2¼ 722 (800-2¼)

