

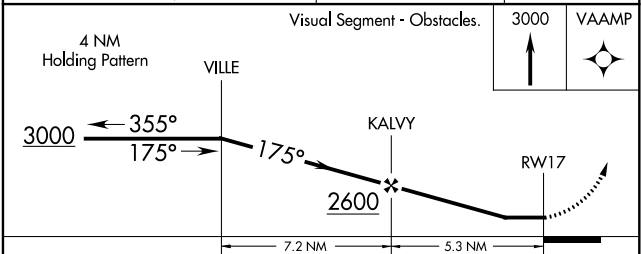
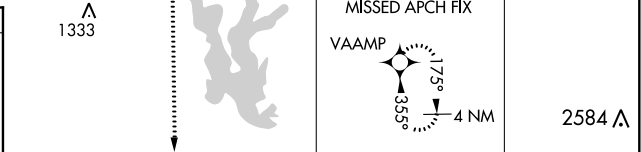
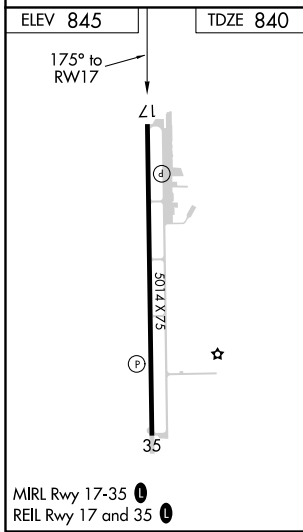
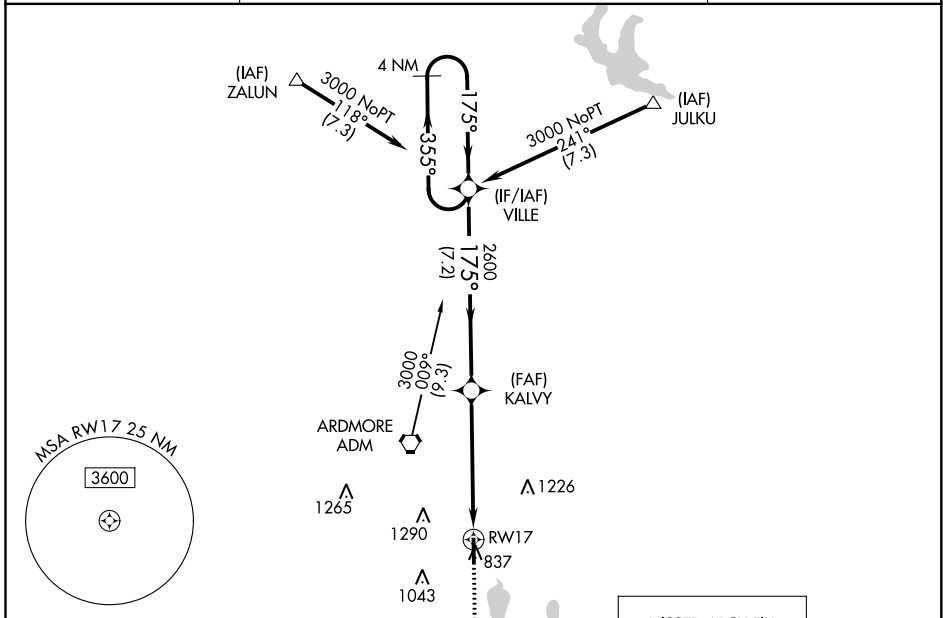
WAAS CH 48921 W17A	APP CRS 175°	Rwy Idg TDZE 840 Apt Elev 845	5014 840 845
--	------------------------	---	---

RNAV (GPS) RWY 17

ARDMORE DOWNTOWN EXEC (1F0)

<p>▼ Rwy 17 helicopter visibility reduction below 1 SM NA. ▲ DME/DME RNP-0.3 NA.</p>	<p>MISSED APPROACH: Climb to 3000 direct VAAMP and hold.</p>
--	--

<p>AWOS-3 118.15</p>	<p>FORT WORTH CENTER 124.75 323.0</p>	<p>UNICOM 122.7 (CTAF) 0</p>
---------------------------------	--	---



CATEGORY	A	B	C	D
LP MDA	1360-1	520 (600-1)	1360-1½	520 (600-1½)
LNNAV MDA	1360-1	520 (600-1)	1360-1½	520 (600-1½)
CIRCLING	1400-1	555 (600-1)	1400-1½ 555 (600-1½)	1640-2½ 795 (800-2½)

SC-1, 02 DEC 2021 to 30 DEC 2021

SC-1, 02 DEC 2021 to 30 DEC 2021

WAAS CH 62921 W35A	APP CRS 355°	Rwy Idg TDZE 845 Apt Elev 845	5014
--	------------------------	---	-------------

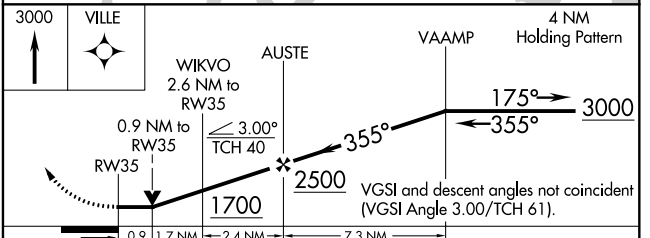
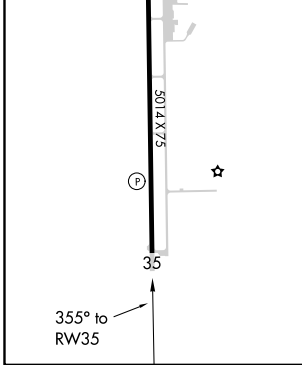
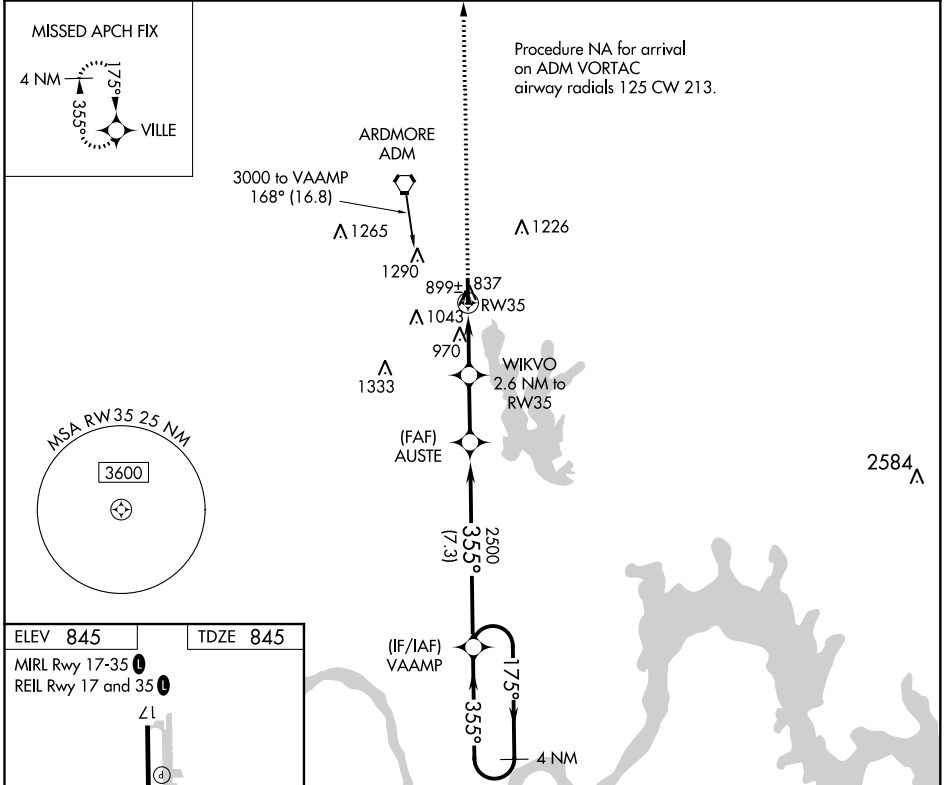
RNAV (GPS) RWY 35

ARDMORE DOWNTOWN EXEC (1F(0))

▽ Rwy 35 helicopter visibility reduction below 3/4 SM NA.
▲ DME/DME RNP-0.3 NA.

MISSED APPROACH: Climb to 3000 direct VILLE and hold.

AWOS-3 118.15	FORT WORTH CENTER 124.75 323.0	UNICOM 122.7 (CTAF) 0
-------------------------	--	---------------------------------



CATEGORY	A	B	C	D
LP MDA		1200-1	355 (400-1)	
LNAV MDA		1220-1	375 (400-1)	
CIRCLING	1400-1	555 (600-1)	1400-1½ 555 (600-1½)	1640-2½ 795 (800-2½)

SC-1, 02 DEC 2021 to 30 DEC 2021

SC-1, 02 DEC 2021 to 30 DEC 2021