

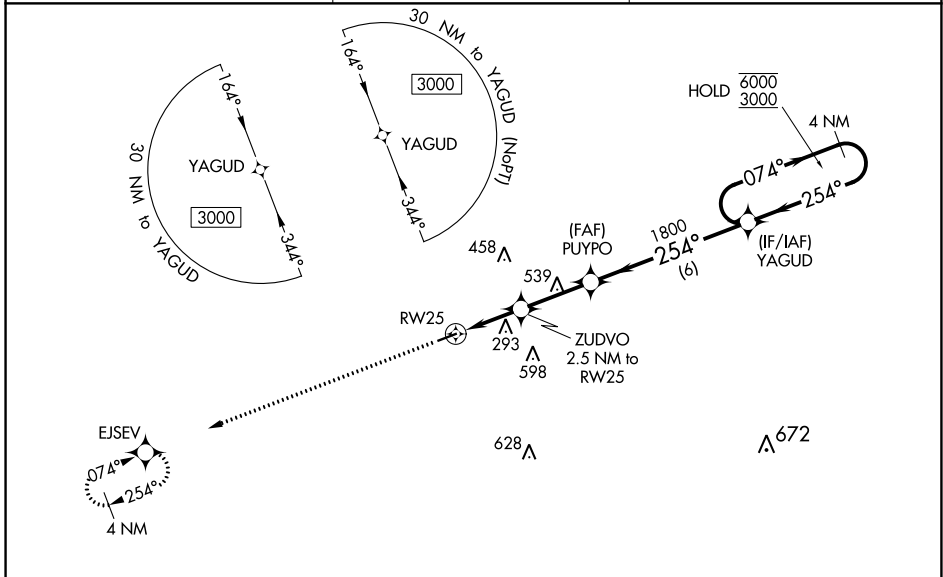
WAAS CH <b>58232</b> <b>W25A</b>	APP CRS <b>254°</b>	Rwy Idg <b>4005</b> TDZE <b>103</b> Apt Elev <b>103</b>
--	------------------------	---

# RNAV (GPS) RWY 25

SUWANNEE COUNTY (24J)

RNP APCH.	MISSED APPROACH: Climb to 3000 direct EJSEV and hold.
<p><b>▼</b> Procedure NA at night. Rwy 25 helicopter visibility reduction below 1 SM NA. For uncompensated Baro-VNAV systems, LNAV/VNAV NA below -15°C or above 54°C.</p>	

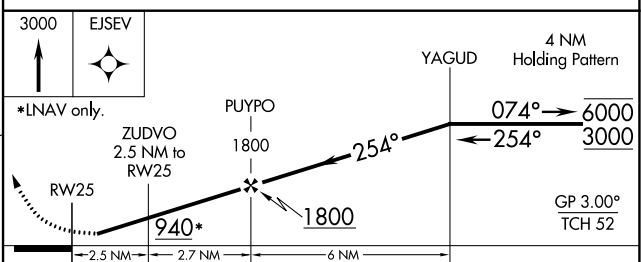
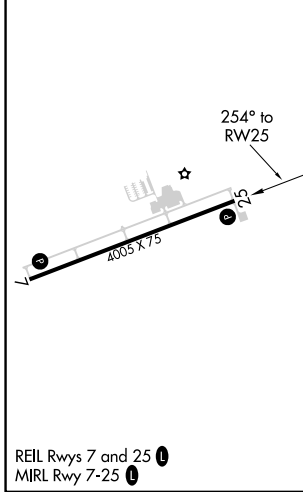
AWOS-3 <b>118.225</b>	JACKSONVILLE CENTER <b>125.375 254.325</b>	UNICOM <b>122.8 (CTAF) 0</b>
--------------------------	---	---------------------------------



SE-3, 22 FEB 2024 to 21 MAR 2024

SE-3, 22 FEB 2024 to 21 MAR 2024

ELEV 103	TDZE 103
----------	----------



CATEGORY	A	B	C	D
LPV DA	353-1	250 (300-1)		NA
LNAV/VNAV DA	536-1½	433 (500-1½)		NA
LNAV MDA	560-1	457 (500-1)		NA
<b>C</b> CIRCLING	560-1 457 (500-1)	600-1 497 (500-1)		NA

REIL Rwy 7 and 25 **0**  
MIRL Rwy 7-25 **0**