

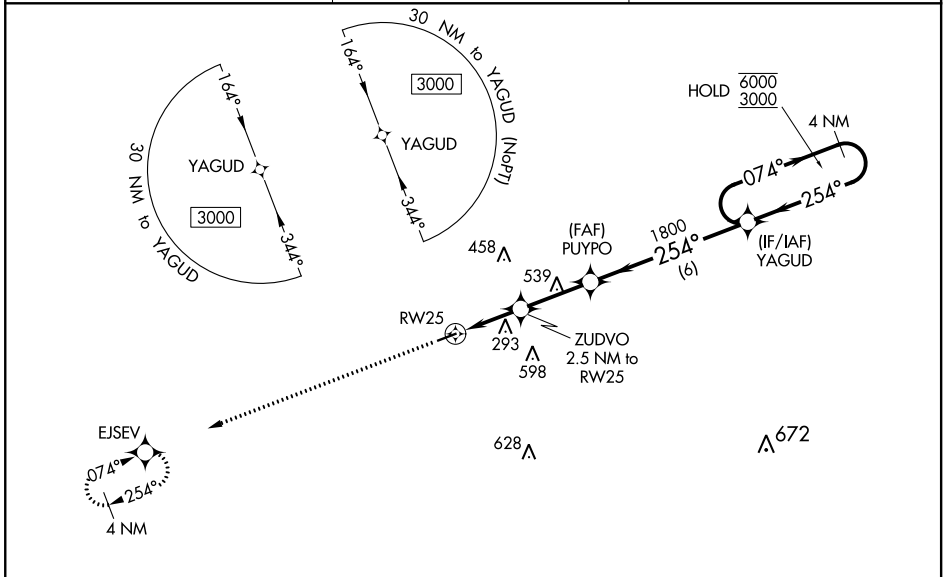
WAAS CH 58232 W25A	APP CRS 254°	Rwy Idg TDZE Apt Elev	4005 103 103
--	------------------------	-----------------------------	---

RNAV (GPS) RWY 25

SUWANNEE COUNTY (24J)

RNP APCH.	<p>⚠ Procedure NA at night. Rwy 25 helicopter visibility reduction below 1 SM NA. For uncompensated Baro-VNAV systems, LNAV/VNAV NA below -15°C or above 54°C.</p> <p>MISSED APPROACH: Climb to 3000 direct EJSEV and hold.</p>

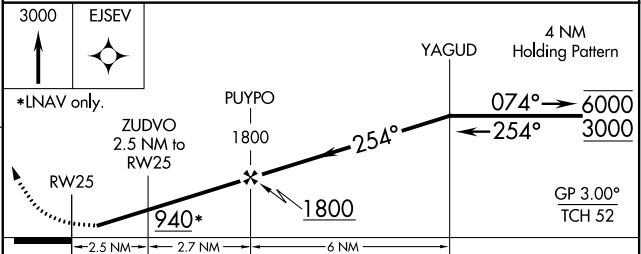
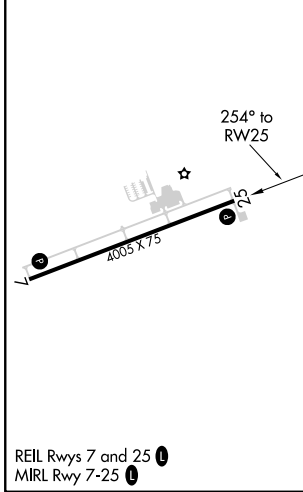
AWOS-3 118.225	JACKSONVILLE CENTER 125.375 254.325	UNICOM 122.8 (CTAF) 1
--------------------------	---	---------------------------------



SE-3, 02 DEC 2021 to 30 DEC 2021

SE-3, 02 DEC 2021 to 30 DEC 2021

ELEV 103	TDZE 103
----------	----------



CATEGORY	A	B	C	D
LPV DA	353-1	250 (300-1)		NA
LNAV/VNAV DA	536-1½	433 (500-1½)		NA
LNAV MDA	560-1	457 (500-1)		NA
C CIRCLING	560-1 457 (500-1)	600-1 497 (500-1)		NA

LIVE OAK, FLORIDA
Orig-C 21MAY20

30°18'N-83°01'W

RNAV (GPS) RWY 25

SUWANNEE COUNTY (24J)

WAAS CH 63132 W07A	APP CRS 074°	Rwy Idg TDZE Apt Elev	4005 102 103
--	------------------------	-----------------------------	---

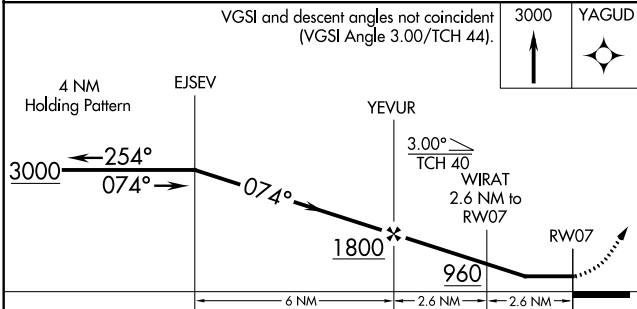
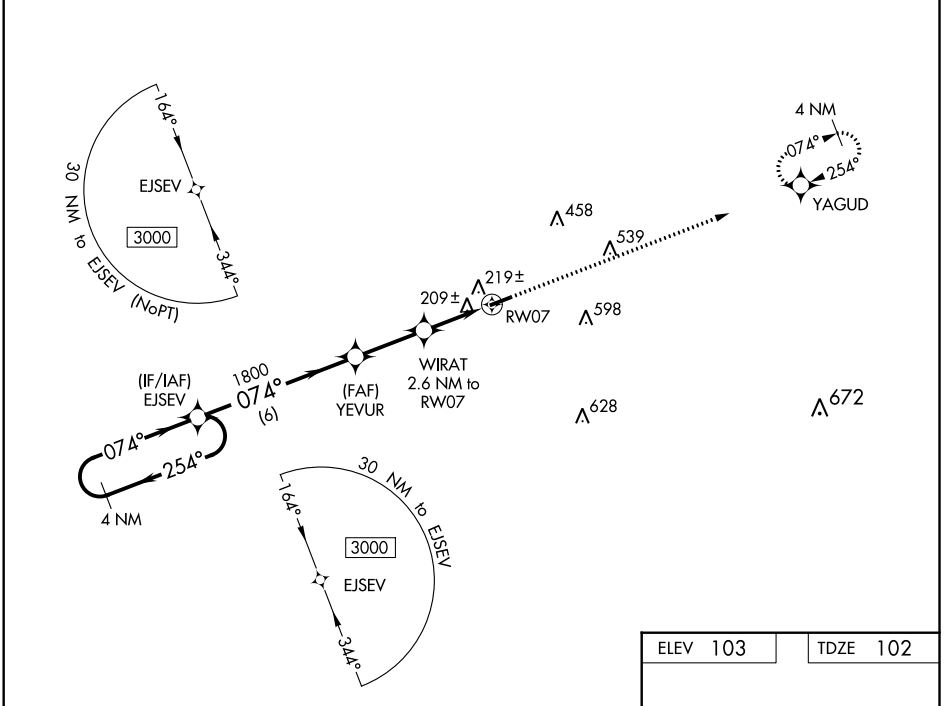
RNAV (GPS) RWY 7

SUWANNEE COUNTY (24J)

▽ When local altimeter setting not received, use Perry altimeter setting and increase all MDAs 100 feet. DME/DME RNP-0.3 NA.
△ NA Helicopter visibility reduction below 1 SM NA.
 Procedure NA at night.

MISSED APPROACH: Climb to 3000 direct YAGUD and hold.

AWOS-3 118.225	JACKSONVILLE CENTER 125.375 254.325	UNICOM 122.8 (CTAF) 0
--------------------------	---	---------------------------------



ELEV 103	TDZE 102
----------	----------

The plan view shows RWY 7 with a length of 4005 x 75 feet. It includes the location of the FAF YEVUR, WIRAT 2.6 NM to RW07, and RW07. A missed approach procedure is shown as a 4 NM climb to 3000 feet direct to YAGUD. The diagram also shows the 4 NM holding pattern at 3000 feet with heading 074° to RW07 and 254° to the holding pattern.

REIL Rwy 7 and 25 **0**
 MRL Rwy 7-25 **0**

CATEGORY	A	B	C	D
LP MDA	460-1	358 (400-1)		NA
LNAV MDA	480-1	378 (400-1)		NA
C CIRCLING	560-1 457 (500-1)	600-1 497 (500-1)		NA

SE-3, 02 DEC 2021 to 30 DEC 2021

SE-3, 02 DEC 2021 to 30 DEC 2021