

APP CRS	Rwy Idg	4795
235°	TDZE	1270
	Apt Elev	1270

# RNAV (GPS) RWY 23

HOLLEY MOUNTAIN AIRPARK (2A2)

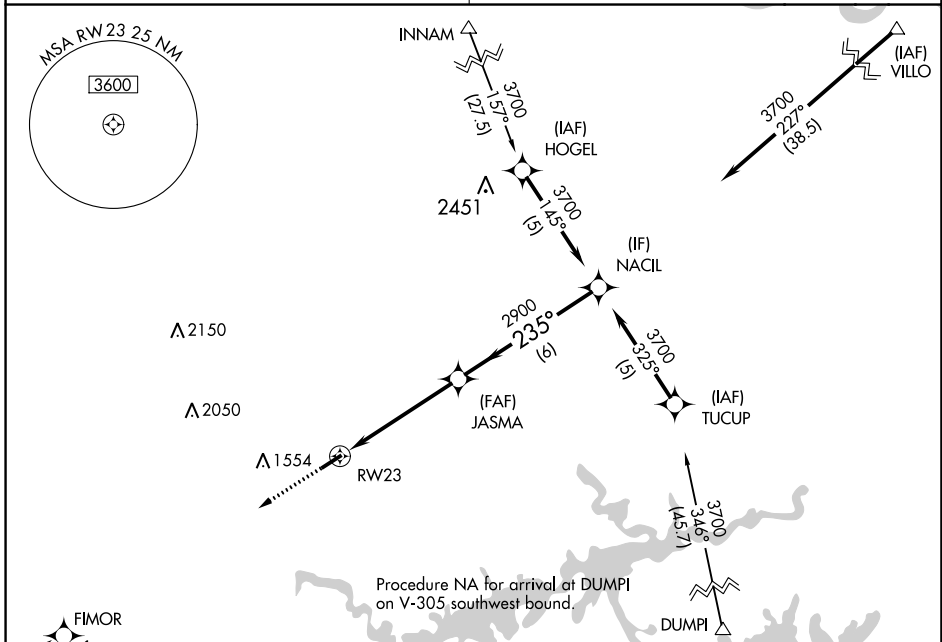
RNP APCH-GPS.

▼ Obtain local altimeter setting on CTAF; when not received, use Marion County Rgnl altimeter setting. Circling Rwy 5 NA at night. Rwy 23 helicopter visibility reduction below  $\frac{3}{4}$  SM NA.

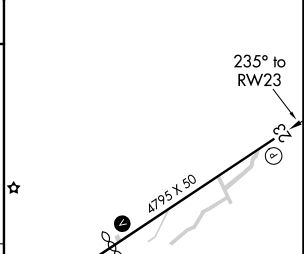
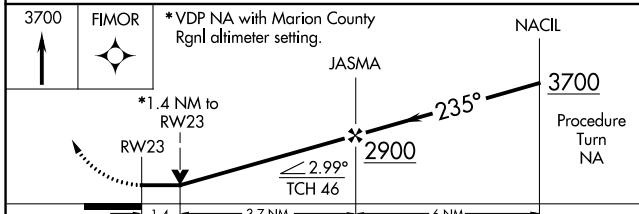
▲ NA

MISSED APPROACH: Climb to 3700 direct FIMOR and hold.

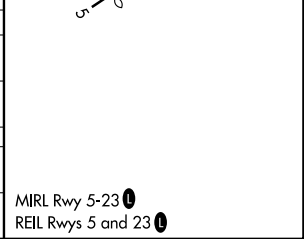
MEMPHIS CENTER	UNICOM
126.85 281.55	122.7 (CTAF) 0



ELEV 1270	TDZE 1270
-----------	-----------



CATEGORY	A	B	C	D
LNVA MDA	1740-1	470 (500-1)	1740-1 $\frac{3}{8}$ 470 (500-1 $\frac{3}{8}$ )	NA
CIRCLING	1760-1 490 (500-1)	1780-1 510 (600-1)	1860-1 $\frac{1}{2}$ 590 (600-1 $\frac{1}{2}$ )	NA
MARION COUNTY RGNL ALTIMETER SETTING MINIMUMS				
LNVA MDA	1900-1	630 (700-1)	1900-1 $\frac{3}{4}$ 630 (700-1 $\frac{3}{4}$ )	NA
CIRCLING	1940-1 670 (700-1)	1960-1 690 (700-1)	2040-2 $\frac{1}{4}$ 770 (800-2 $\frac{1}{4}$ )	NA



SC-1, 22 FEB 2024 to 21 MAR 2024

SC-1, 22 FEB 2024 to 21 MAR 2024