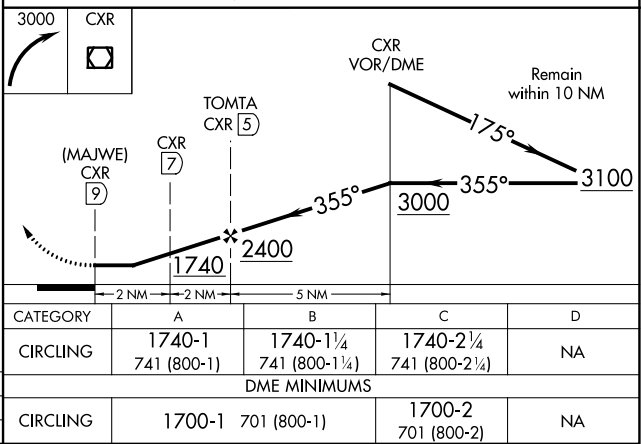
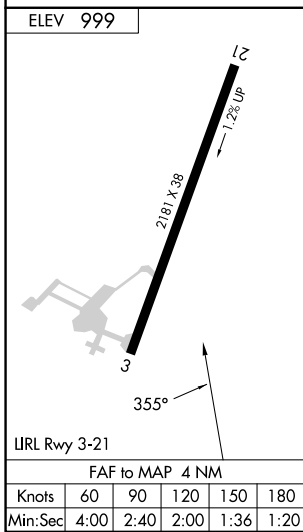
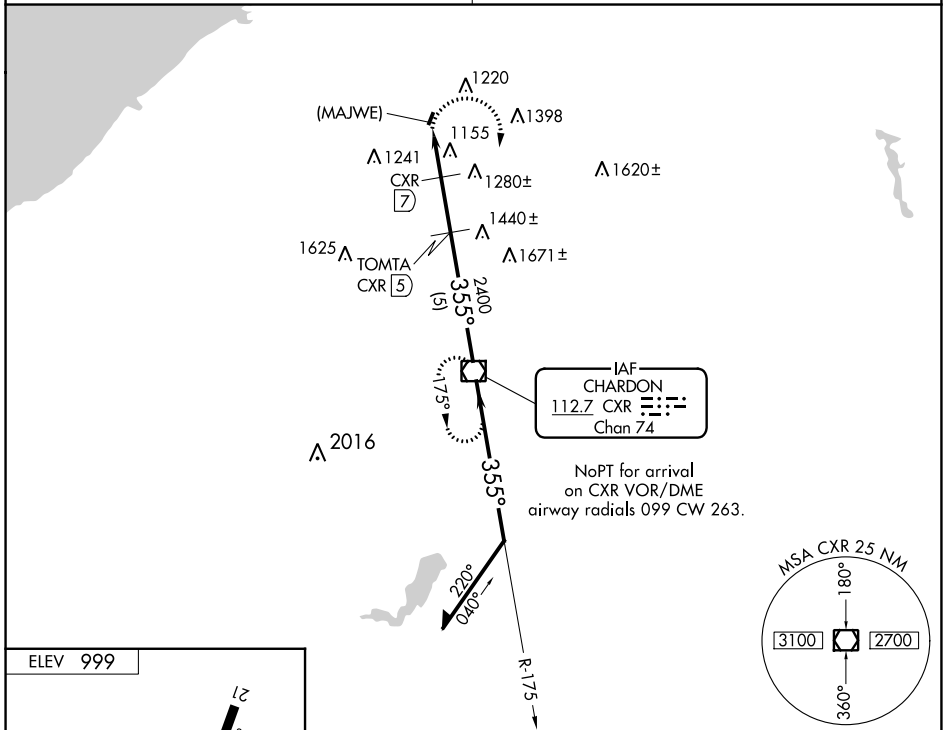


| | | | |
|---|------------------------|---|--|
| VOR/DME CXR 112.7 Chan 74 | APP CRS 355° | Rwy Idg TDZE Apt Elev 999 | N/A N/A 999 |
|---|------------------------|---|--|

VOR or GPS-A

CONCORD AIRPARK (2G1)

| | |
|--|---|
| DME required for VOR approach. | MISSED APPROACH: Climbing right turn to 3000 direct CXR VOR/DME and hold. |
| <p>Procedure not authorized at night. Use Cleveland-Hopkins altimeter setting.</p> | |
| CLEVELAND APP CON 125.35 346.325 | UNICOM 122.8 (CTAF) |



EC-2, 22 FEB 2024 to 21 MAR 2024

EC-2, 22 FEB 2024 to 21 MAR 2024