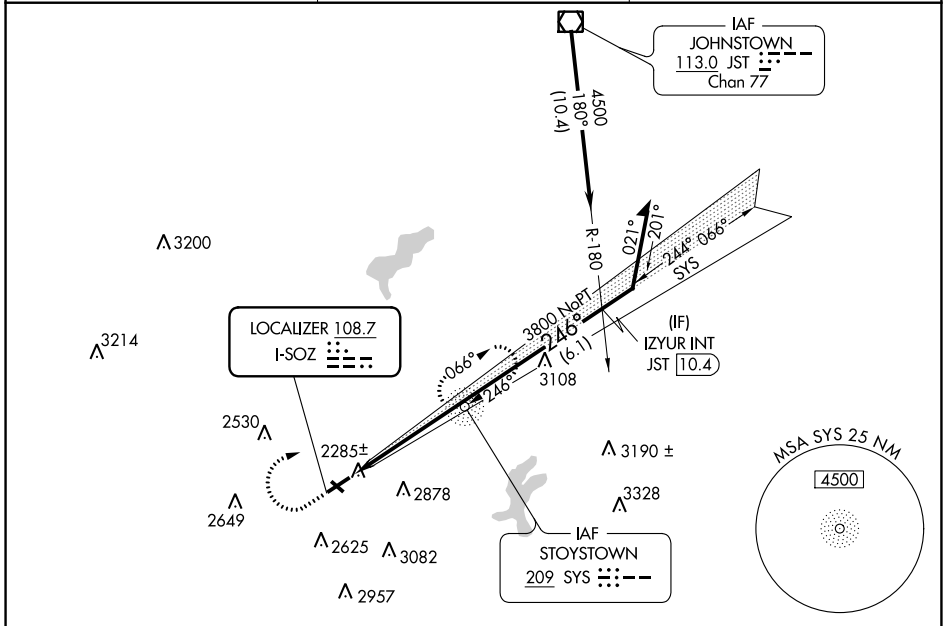


LOC I-SOZ 108.7	APP CRS 246°	Rwy Idg TDZE Apt Elev	5002 2240 2275
---------------------------	------------------------	-----------------------------	---

LOC RWY 25

SOMERSET COUNTY (2G9)

ADF required.		MISSED APPROACH: Climb to 4500 then right turn direct SYS NDB and hold.
<p>▼ Procedure NA at night. Rwy 25 helicopter visibility reduction below 1 SM NA.</p> <p>▲ Circling NA to Rwy 14 and 32.</p>		
AWOS-3P 133.8	JOHNSTOWN APP CON ★ 121.2 299.2	UNICOM 122.8 (CTAF) 0



NE-4, 22 FEB 2024 to 21 MAR 2024

NE-4, 22 FEB 2024 to 21 MAR 2024

ELEV 2275	TDZE 2240
-----------	-----------

5002 X 75	2729 X 150
-----------	------------

MIRL Rwy 7-25
REIL Rwys 7 and 25
FAF to MAP 4.9 NM

Knots	60	90	120	150	180
Min:Sec	4:54	3:16	2:27	1:58	1:38