

WAAS CH <b>97724</b> <b>W18A</b>	APP CRS <b>185°</b>	Rwy Idg TDZE <b>247</b> Apt Elev <b>247</b>	<b>3499</b>
--	------------------------	---	-------------

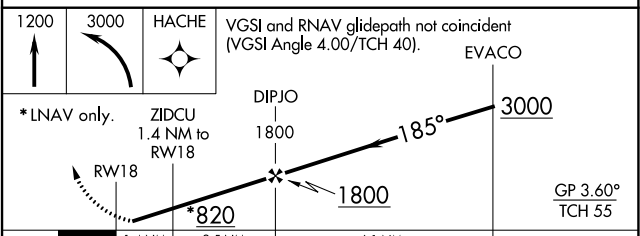
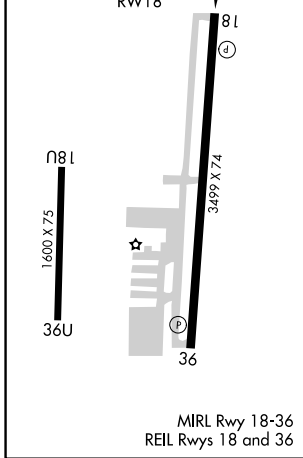
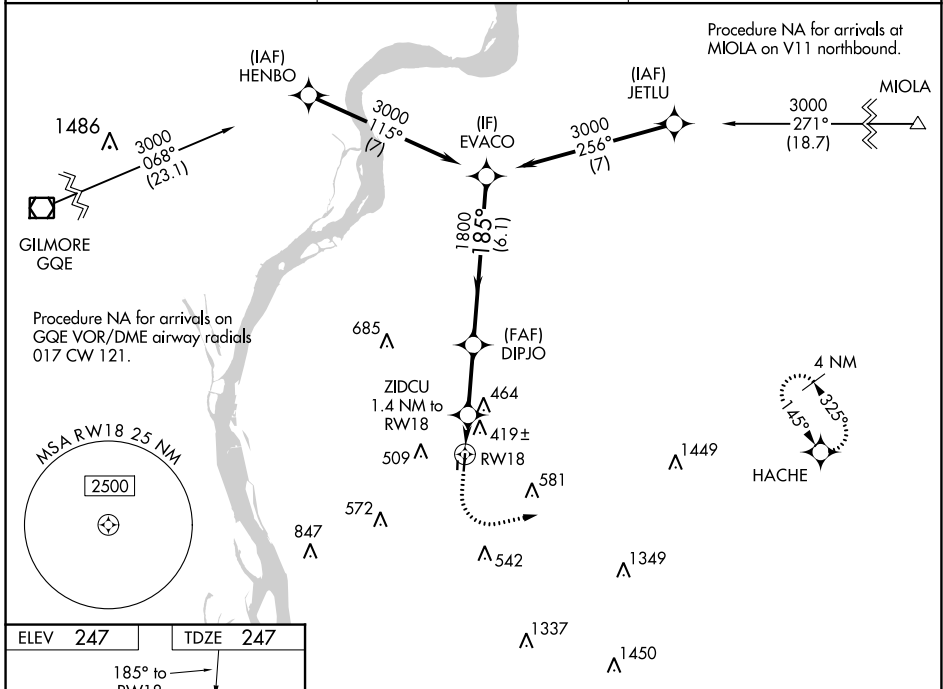
# RNAV (GPS) RWY 18

CHARLES W BAKER (2M8)

**NA** Baro-VNAV NA. DME/DME RNP-0.3 NA. When local altimeter setting not received, use Millington Rgnl Jetport altimeter setting and increase all DA 24 feet; increase all MDA 40 feet and LNAV Cat C visibility 1/8 mile. Rwy 18 helicopter visibility reduction below 3/4 SM NA.

MISSED APPROACH: Climb to 1200 then climbing left turn to 3000 direct HACHE and hold.

AWOS-A <b>122.8</b>	MEMPHIS APP CON <b>125.8 338.3</b>	UNICOM <b>122.8 (CTAF)</b>
------------------------	---------------------------------------	-------------------------------



CATEGORY	A	B	C	D
LPV DA	601-1 354 (400-1)			NA
LNAV/ VNAV DA	733-1 3/8 486(500-1 3/8)			NA
LNAV MDA	680-1 433 (500-1)		680-1 1/4 433 (500-1 1/4)	NA
CIRCLING	740-1 493 (500-1)	780-1 533 (600-1)	860-1 3/4 613 (700-1 3/4)	NA

SE-1, 10 SEP 2020 to 08 OCT 2020

SE-1, 10 SEP 2020 to 08 OCT 2020

WAAS CH <b>93924</b> <b>W36A</b>	APP CRS <b>005°</b>	Rwy Idg <b>3499</b> TDZE <b>246</b> Apt Elev <b>247</b>
--	------------------------	---

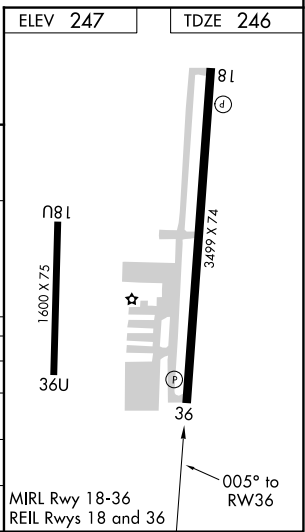
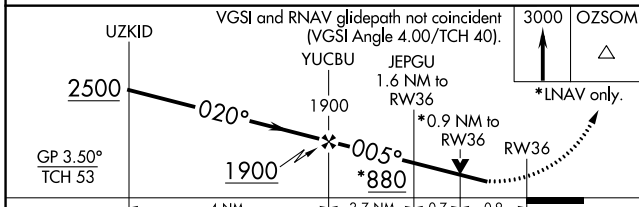
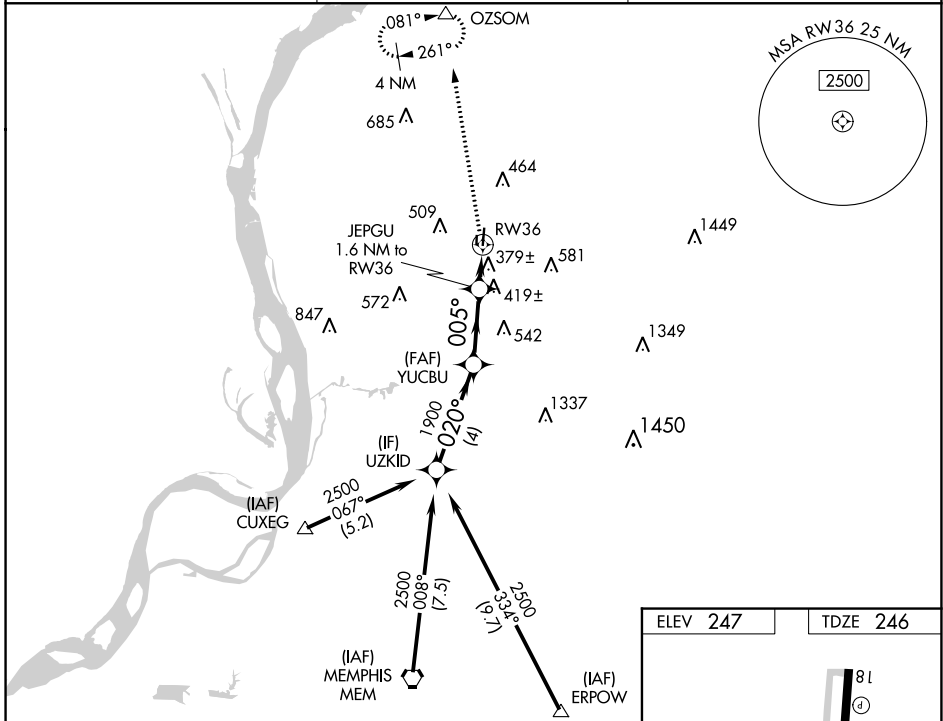
# RNAV (GPS) RWY 36

CHARLES W BAKER (2M8)

**▼** Baro-VNAV NA when using Millington Rgnl Jetport altimeter setting. For uncompensated Baro-VNAV systems, LNAV/VNAV NA below -15°C (5°F) or above 42°C (107°F).  
**▲** DME/DME RNP-0.3 NA. VDP NA with Millington Rgnl Jetport altimeter setting.  
 When local altimeter setting not received, use Millington Rgnl Jetport altimeter setting and increase all DA 24 feet; increase all MDA 40 feet and LNAV Cat C visibility 1/8 mile.  
 Rwy 36 helicopter visibility reduction below 3/4 SM NA.

MISSED APPROACH: Climb to 3000 direct OZSOM and hold, continue climb-in-hold to 3000.

AWOS-A <b>122.8</b>	MEMPHIS APP CON <b>125.8 338.3</b>	UNICOM <b>122.8 (CTAF)</b>
------------------------	---------------------------------------	-------------------------------



CATEGORY	A		B		C		D
	DA	MDA	DA	MDA	DA	MDA	DA
LPV	586-1	434 (500-1)	340 (400-1)	434 (500-1)	860-1 1/4	613 (700-1 1/4)	NA
LNAV/VNAV	689-1 3/8	443 (500-1 3/8)	443 (500-1 3/8)	434 (500-1)	680-1 1/4	434 (500-1 1/4)	NA
LNAV MDA	680-1	434 (500-1)	434 (500-1)	434 (500-1)	680-1 1/4	434 (500-1 1/4)	NA
CIRCLING	740-1 493 (500-1)	780-1 533 (600-1)	780-1 533 (600-1)	780-1 533 (600-1)	860-1 1/4 613 (700-1 1/4)	860-1 1/4 613 (700-1 1/4)	NA

SE-1, 10 SEP 2020 to 08 OCT 2020

SE-1, 10 SEP 2020 to 08 OCT 2020

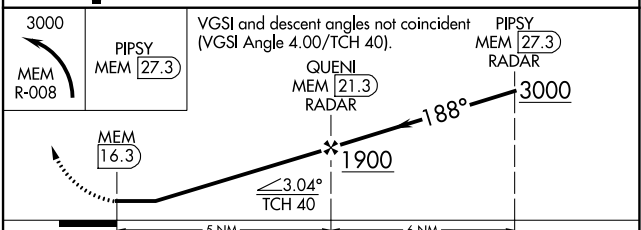
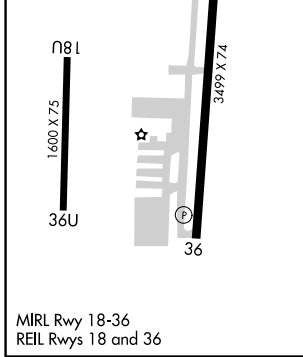
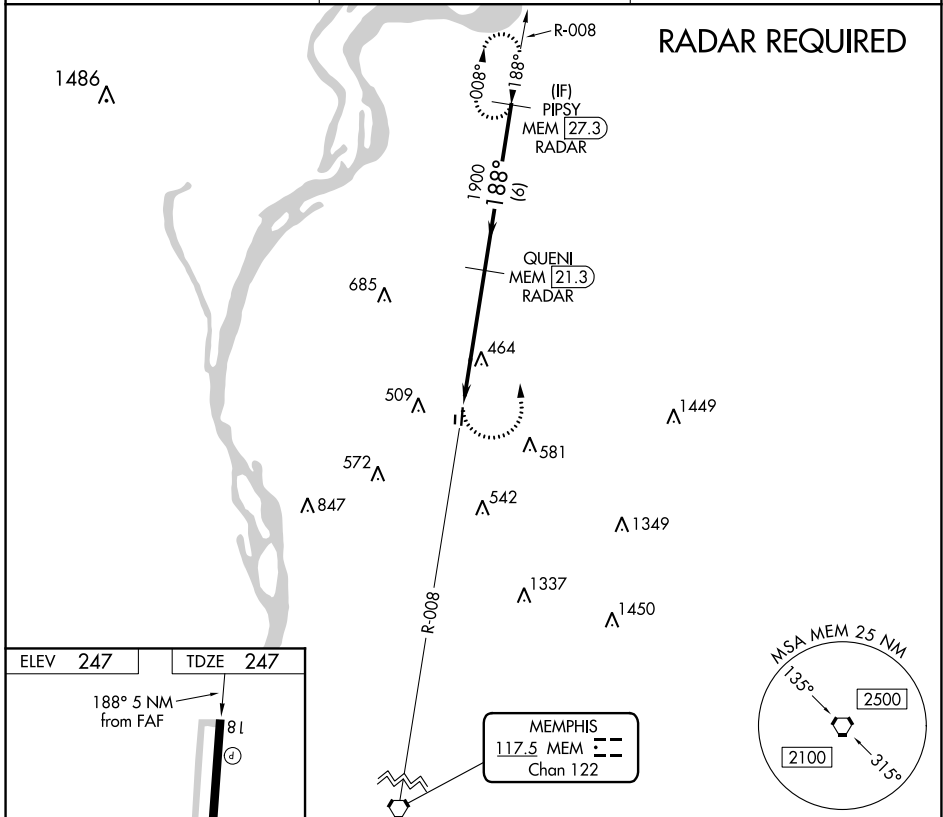
VORTAC MEM <b>117.5</b> Chan <b>122</b>	APP CRS <b>188°</b>	Rwy Idg TDZE <b>247</b> Apt Elev <b>247</b>
---	------------------------	---

**VOR RWY 18**  
CHARLES W BAKER (2M8)

**▽** When local altimeter setting not received, use Millington Rgnl altimeter setting and increase all MDA 40 feet and increase Cat C visibility ¼ mile.  
**△ NA** Rwy 18 helicopter visibility reduction below ¼ SM NA. DME required.

**MISSED APPROACH:** Climbing left turn to 3000 on MEM VORTAC R-008 to PIPSY/MEM 27.3 DME and hold.

AWOS-A <b>122.8</b>	MEMPHIS APP CON <b>125.8 338.3</b>	UNICOM <b>122.8</b> (CTAF)
------------------------	---------------------------------------	-------------------------------



CATEGORY	A	B	C	D
S-18	760-1	513 (600-1)	760-1 3/8 513 (600-1 3/8)	NA
CIRCLING	760-1 513 (600-1)	780-1 533 (600-1)	860-1 3/4 613 (700-1 3/4)	NA

SE-1, 10 SEP 2020 to 08 OCT 2020

SE-1, 10 SEP 2020 to 08 OCT 2020