

WAAS CH 70502 W11A	APP CRS 112°	Rwy Idg TDZE 142 Apt Elev 142
--	------------------------	---

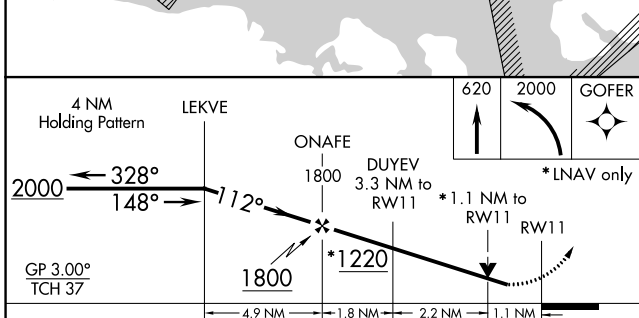
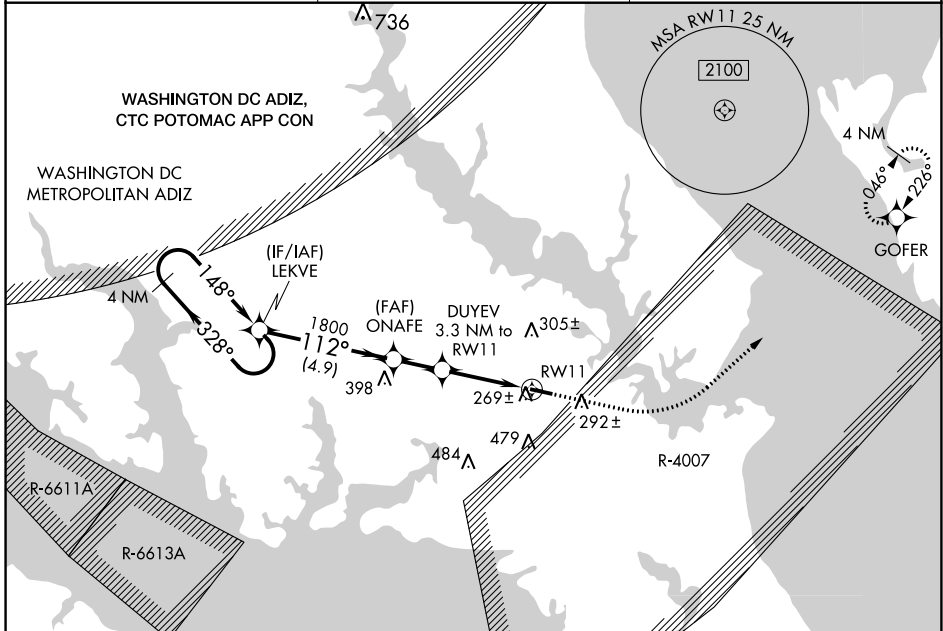
RNAV (GPS) RWY 11

ST MARY'S COUNTY RGNL (2W6)

⚠ For uncompensated Baro-VNAV systems, LNAV/VNAV NA below -15°C (5°F) or above 54°C (130°F). Rwy 11 helicopter visibility reduction below ¾ SM NA.
⚠ DME/DME RNP-0.3 NA.

MISSED APPROACH: Climb to 620 then climbing left turn to 2000 direct GOFER and hold.

AWOS-3 119.575	PATUXENT APP CON ★ 121.0 250.3	UNICOM 123.0 (CTAF) 0
--------------------------	--	---------------------------------



CATEGORY	A	B	C	D
LPV DA		419-1	277 (300-1)	
LNAV/VNAV DA		503-1	361 (400-1)	
LNAV MDA		520-1	378 (400-1)	
C CIRCLING	660-1	518 (600-1)	840-2 698 (700-2)	840-2¼ 698 (700-2¼)

ELEV 142 TDZE 142

REIL Rwy 11 and 29 **0**
MIRL Rwy 11-29 **0**

NE-3, 22 FEB 2024 to 21 MAR 2024

NE-3, 22 FEB 2024 to 21 MAR 2024

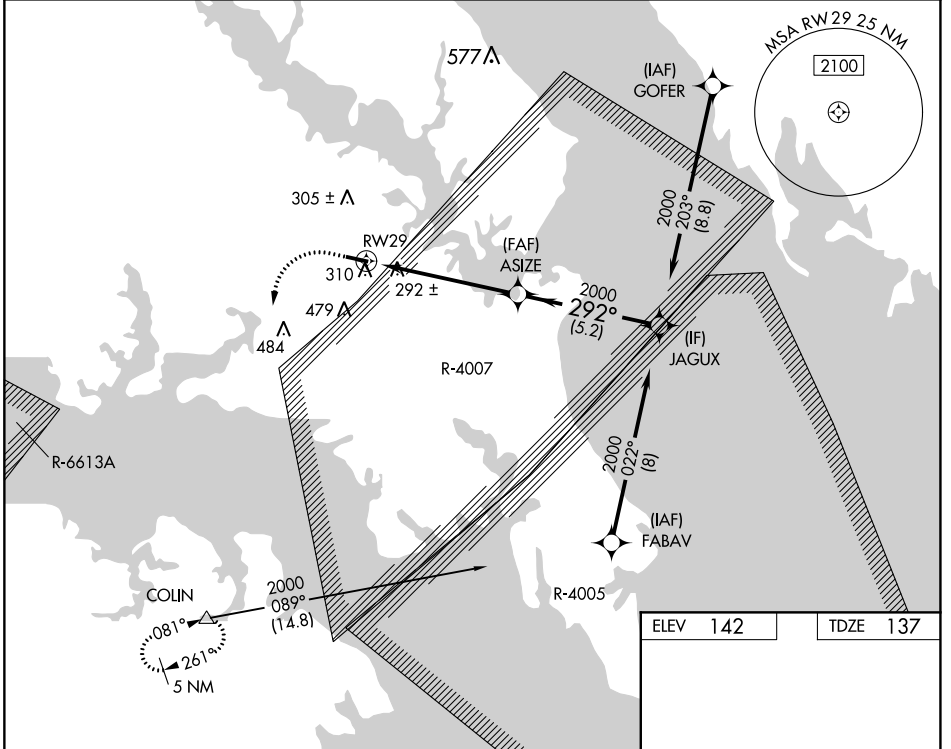
WAAS CH 61313 W29A	APP CRS 292°	Rwy Idg TDZE 137 Apt Elev 142
--	------------------------	---

RNAV (GPS) RWY 29

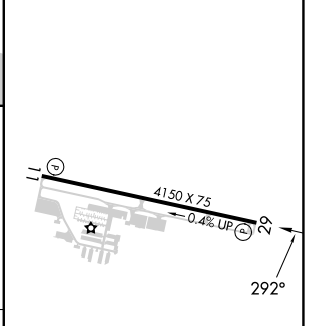
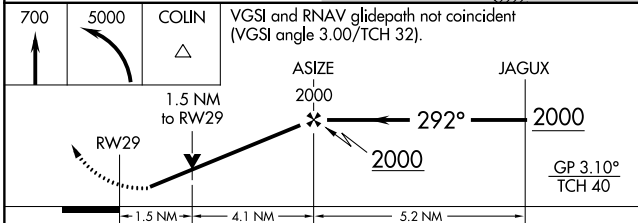
ST MARY'S COUNTY RGNL (2W6)

RNP APCH - GPS.	<p>▼ Rwy 29 helicopter visibility reduction below 3/4 SM NA. For uncompensated Baro-VNAV systems, LNAV/VNAV NA below -15°C or above 54°C. When local altimeter setting not received, use Patuxent River altimeter setting: increase LPV DA to 475 feet and all visibilities 1/8 SM, increase LNAV/VNAV DA to 688 feet and all visibilities 1/4 SM. Increase all MDAs 40 feet and LNAV visibility Cats C/D 1/8 SM.</p>	<p>MISSSED APPROACH: Climb to 700 then climbing left turn to 5000 direct COLIN and hold, continue climb in hold to 5000.</p>
-----------------	---	--

AWOS-3 119.575	PATUXENT APP CON ★ 121.0 250.3	UNICOM 123.0 (CTAF) 0
--------------------------	--	---------------------------------



ELEV 142	TDZE 137
-----------------	-----------------



CATEGORY	A	B	C	D
LPV DA		441-7/8	304 (300-7/8)	
LNAV/VNAV DA		654-1 3/8	517 (600-1 3/8)	
LNAV MDA	620-1	483 (500-1)	620-1 3/8	483 (500-1 3/8)
CIRCLING	660-1	518 (600-1)	840-2 698 (700-2)	840-2 1/4 698 (700-2 1/4)

REIL Rwy 11 and 29 0
MIRL Rwy 11-29 0

NE-3, 22 FEB 2024 to 21 MAR 2024

NE-3, 22 FEB 2024 to 21 MAR 2024