

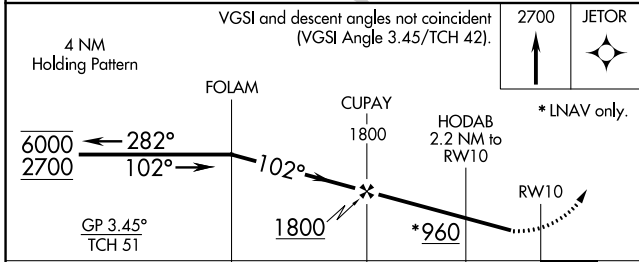
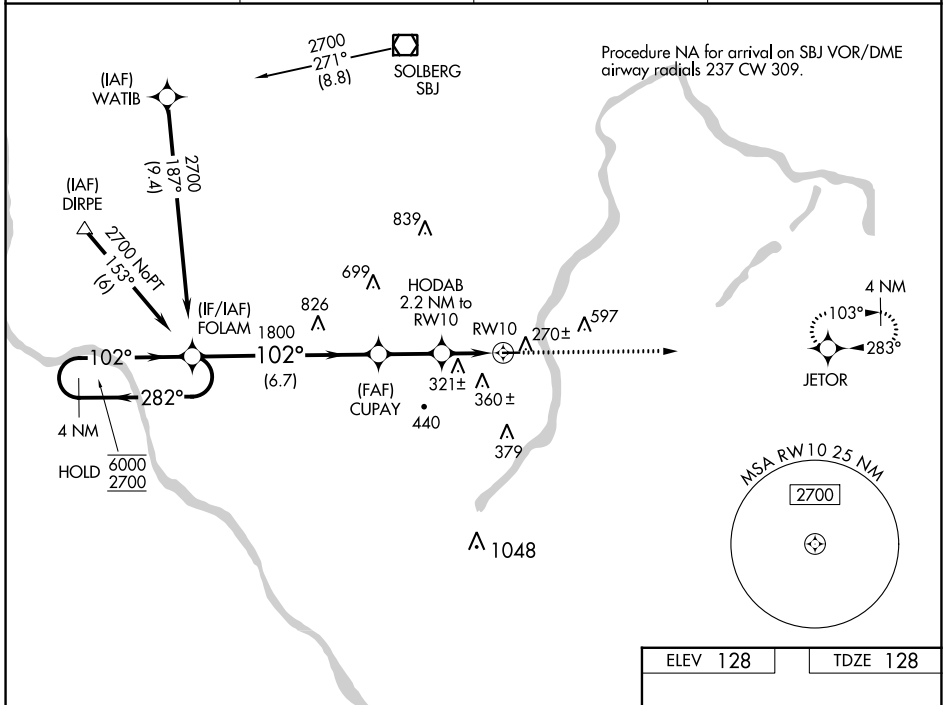
WAAS CH 86843 W10A	APP CRS 102°	Rwy Idg TDZE 128 Apt Elev 128	3499
--	------------------------	---	-------------

RNAV (GPS) RWY 10

PRINCETON (39N)

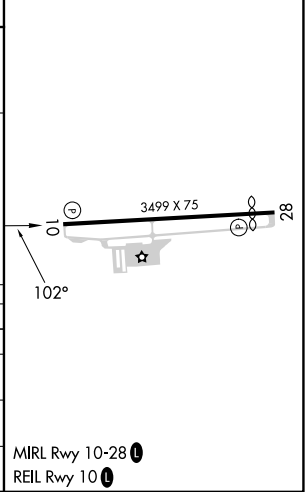
RNP APCH - GPS.		MISSED APPROACH: Climb to 2700 direct JETOR and hold.
<p>▼ Rwy 10 helicopter visibility reduction below 3/4 SM NA. Circling Rwy 28 NA at night.</p> <p>▲ NA Baro-VNAV NA. Use Trenton altimeter setting.</p>		

TTN ASOS 126.775	NEW YORK APP CON 132.8 379.9	UNICOM 122.725 (CTAF)	123.05 0
----------------------------	--	---------------------------------	-----------------



ELEV 128	TDZE 128
----------	----------

CATEGORY	A	B	C	D
LPV DA		441-1	313 (400-1)	
LNAV/VNAV DA		533-1 1/8	405 (500-1 1/8)	
LNAV MDA	580-1	452 (500-1)	580-1 3/8	452 (500-1 3/8)
CIRCLING	760-1 632 (700-1)	840-1 712 (800-1)	940-2 1/2 812 (900-2 1/2)	1000-2 3/4 872 (900-2 3/4)



NE-2, 30 NOV 2023 to 28 DEC 2023

NE-2, 30 NOV 2023 to 28 DEC 2023

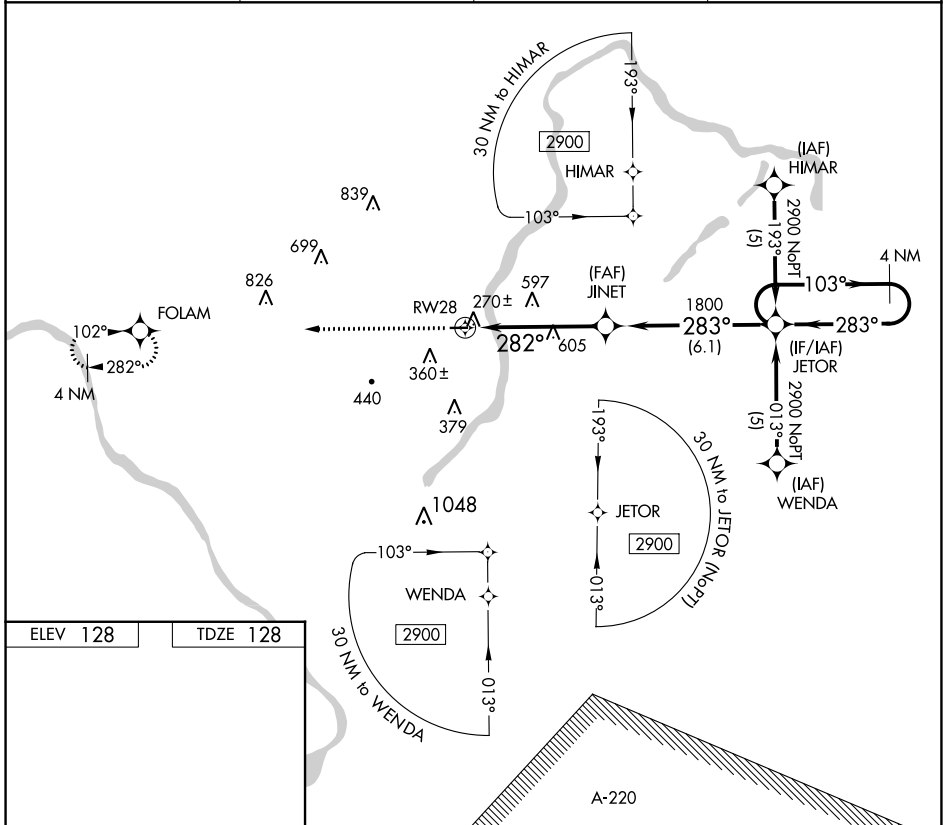
RNAV (GPS) RWY 28

PRINCETON (39N)

APP CRS 282°	Rwy Idg TDZE Apt Elev	3130 128 128
------------------------	-----------------------------	---

RNP APCH.	<p>▼ Use Trenton Mercer altimeter setting, if not received use Somerset altimeter setting. Procedure NA at night. Rwy 28 helicopter visibility reduction below 1 SM NA.</p> <p>▲ NA MISSED APPROACH: Climb to 2700 direct FOLAM and hold.</p>
-----------	---

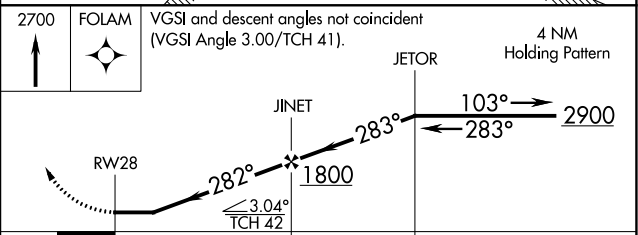
TTN ASOS 126.775	NEW YORK APP CON 132.8 379.9	UNICOM 122.725 (CTAF)	123.05
----------------------------	--	---------------------------------	---------------



ELEV 128	TDZE 128
----------	----------

MIRL Rwy 10-28

REIL Rwy 10



CATEGORY	A	B	C	D
LNAV MDA	900-1 772 (800-1)	900-1¼ 772 (800-1¼)	900-2¼ 772 (800-2¼)	NA

NE-2, 30 NOV 2023 to 28 DEC 2023

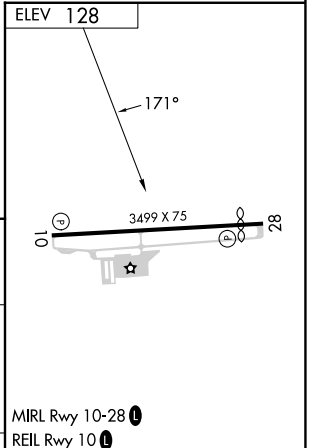
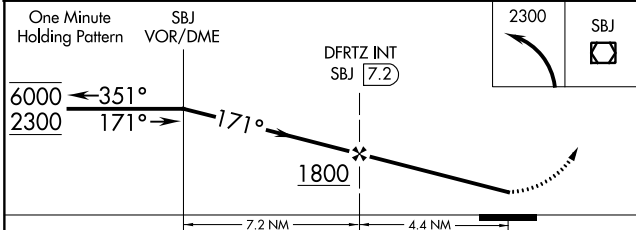
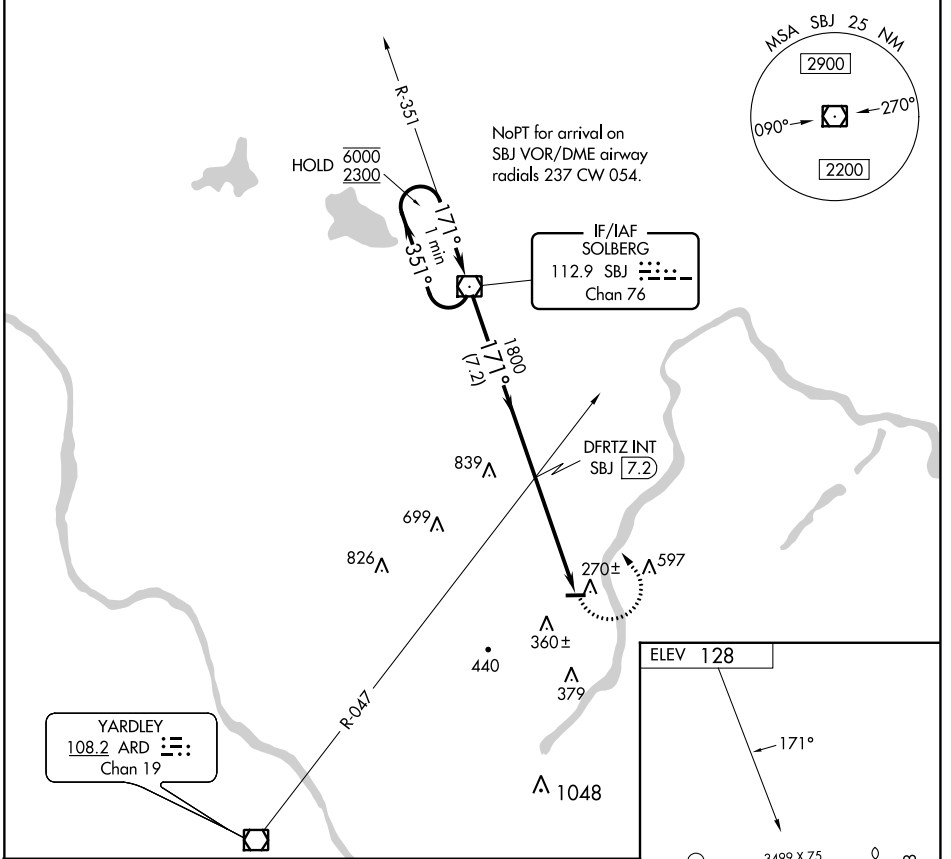
NE-2, 30 NOV 2023 to 28 DEC 2023

VOR/DME SBJ 112.9 Chan 76	APP CRS 171°	Rwy Idg TDZE Apt Elev 128	N/A N/A 128
---	------------------------	---	--

VOR-A
PRINCETON (39N)

DME required.	MISSED APPROACH: Climbing left turn to 2300 direct SBJ VOR/DME and hold.
<p>▼ Circling Rwy 28 NA at night. Use Trenton altimeter setting; when not received, use</p> <p>▲ NA Somerville altimeter setting.</p>	

TTN ASOS 126.775	NEW YORK APP CON 132.8 379.9	UNICOM 122.725 (CTAF)	123.05 0
----------------------------	--	---------------------------------	-----------------



CATEGORY	A	B	C	D
<p>☑ CIRCLING</p>	1040-1¼	912 (1000-1¼)	NA	

NE-2, 30 NOV 2023 to 28 DEC 2023

NE-2, 30 NOV 2023 to 28 DEC 2023