

APP CRS	Rwy Idg	N/A
108°	TDZE	N/A
	Apt Elev	1375

# RNAV (GPS)-A

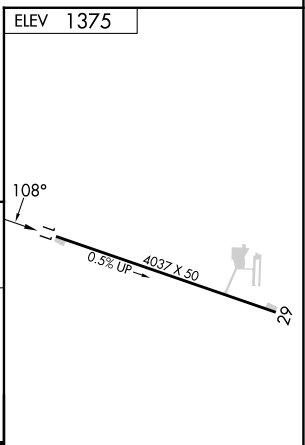
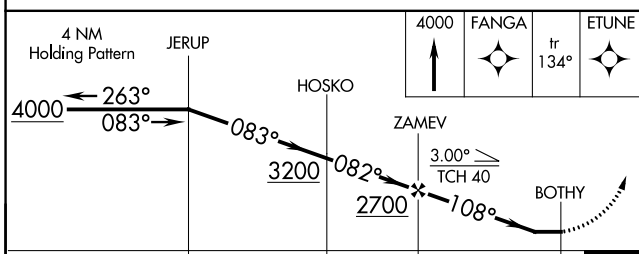
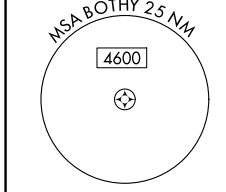
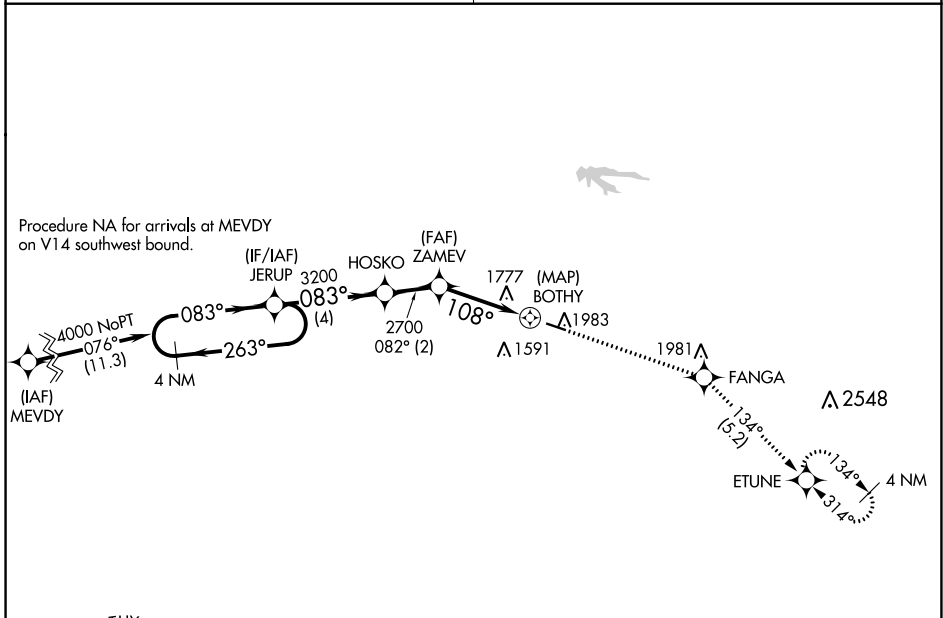
## DOWNTOWN (3DW)

**NA** Circling NA north of Rwy 11-29. DME/DME RNP-0.3 NA.  
 Use Springfield-Branson Nhl altimeter setting; when not received, use Branson West altimeter setting and increase all MDA 60 feet.  
 Procedure NA at night. Helicopter visibility reduction below 1 SM NA.

**MISSED APPROACH:** Climb to 4000 direct FANGA and track 134° to ETUNE and hold.

SPRINGFIELD APP CON  
**124.95 353.925**

UNICOM  
**122.8 (CTAF) 0**



CATEGORY	A	B	C	D
CIRCLING	2060-1	685 (700-1)	NA	

MIRL Rwy 11-29 0

NC-3, 22 FEB 2024 to 21 MAR 2024

NC-3, 22 FEB 2024 to 21 MAR 2024

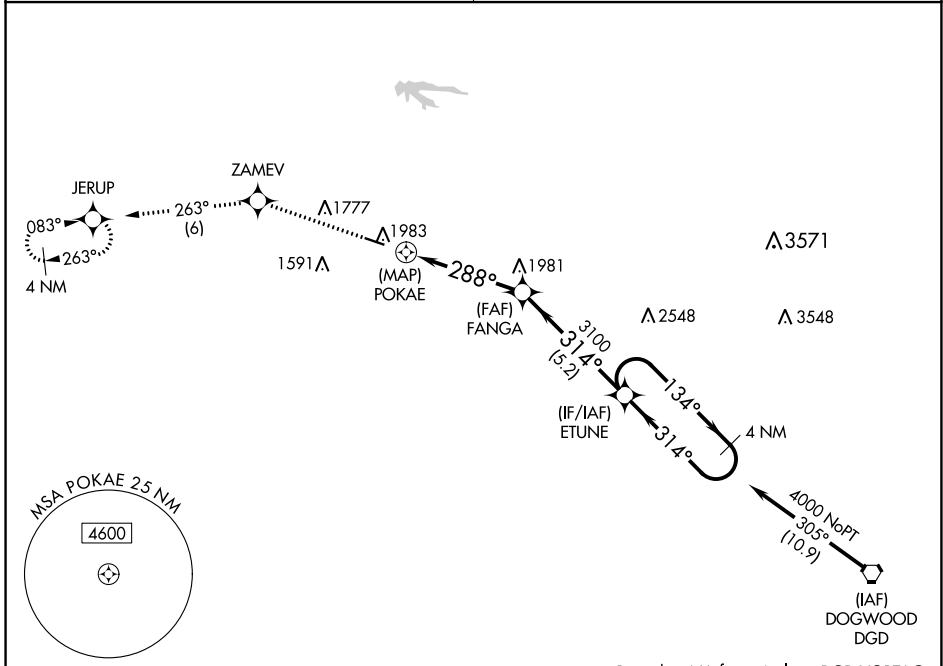
APP CRS <b>288°</b>	Rwy Idg TDZE Apt Elev	<b>N/A</b> <b>N/A</b> <b>1375</b>
------------------------	-----------------------------	---

# RNAV (GPS)-B DOWNTOWN (3DW)

**NA** Circling NA north of Rwy 11-29. DME/DME RNP-0.3 NA. Use Springfield-Branson Nil altimeter setting; when not received, use Branson West altimeter setting and increase all MDA 60 feet. Procedure NA at night. Helicopter visibility reduction below 1 SM NA.

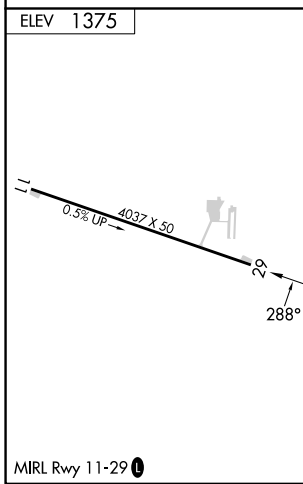
**MISSED APPROACH:** Climb to 4000 direct ZAMEV and track 263° to JERUP and hold.

SPRINGFIELD APP CON <b>124.95 353.925</b>	UNICOM <b>122.8 (CTAF) 0</b>
--	---------------------------------



NC-3, 22 FEB 2024 to 21 MAR 2024

NC-3, 22 FEB 2024 to 21 MAR 2024



Procedure NA for arrivals on DGD VORTAC airway radials 232 CW 311.

4000	ZAMEV	tr 263°	JERUP	Visual Segment - Obstacles.
				ETUNE 4 NM Holding Pattern
				134° → 4000
				← 314°
				3100
				288°
				314°
				5.2 NM
				4.4 NM
				0.9 NM
CATEGORY	A	B	C	D
<b>C</b> CIRCLING	2280-1¼ 905 (1000-1¼)		NA	