

WAAS CH 70439 W17A	APP CRS 170°	Rwy Idg TDZE Apt Elev	4500 2086 2086
--	------------------------	-----------------------------	---

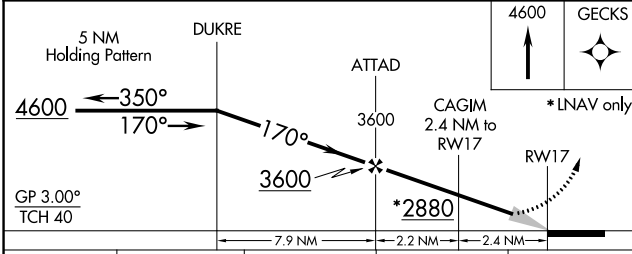
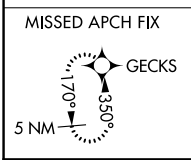
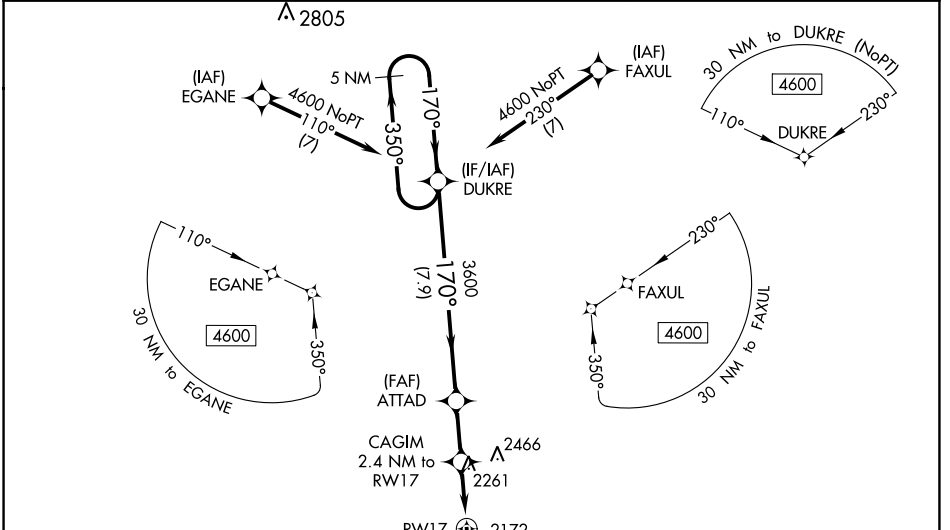
RNAV (GPS) RWY 17

COMANCHE COUNTY (3K8)

⚠ Baro-VNAV NA when using Pratt altimeter setting. DME/DME RNP-0.3 NA. When local altimeter setting not received, use Pratt altimeter setting and increase LPV and LNAV/VNAV DA to 2558; increase all MDA 120 feet; increase LPV and LNAV/VNAV all Cats visibility ¼ SM, increase LNAV Cat C visibility ¼ SM, and increase Circling Cat C visibility ½ SM.

MISSED APPROACH: Climb to 4600 direct GECKS and hold.

AWOS-3PT 118.05	KANSAS CITY CENTER 126.95 379.2	CTAF 122.9 0
---------------------------	---	------------------------



ELEV 2086	TDZE 2086
<p>170° to RW17</p> <p>4500 x 60</p> <p>35</p> <p>0.3% up</p>	
<p>MIRL Rwy 17-35 0</p> <p>REIL Rwys 17 and 35 0</p>	

CATEGORY	A	B	C	D
LPV DA	2447-1 1/8 361 (400-1 1/8)			NA
LNAV/VNAV DA	2447-1 1/8 361 (400-1 1/8)			NA
LNAV MDA	2640-1	554 (600-1)	2640-1 1/8 554 (600-1 1/8)	NA
C CIRCLING	2640-1	554 (600-1)	2940-2 1/2 854 (900-2 1/2)	NA

NC-2, 10 SEP 2020 to 08 OCT 2020

NC-2, 10 SEP 2020 to 08 OCT 2020

WAAS CH 86839 W35A	APP CRS 350°	Rwy Idg TDZE Apt Elev	4500 2082 2086
--	------------------------	-----------------------------	---

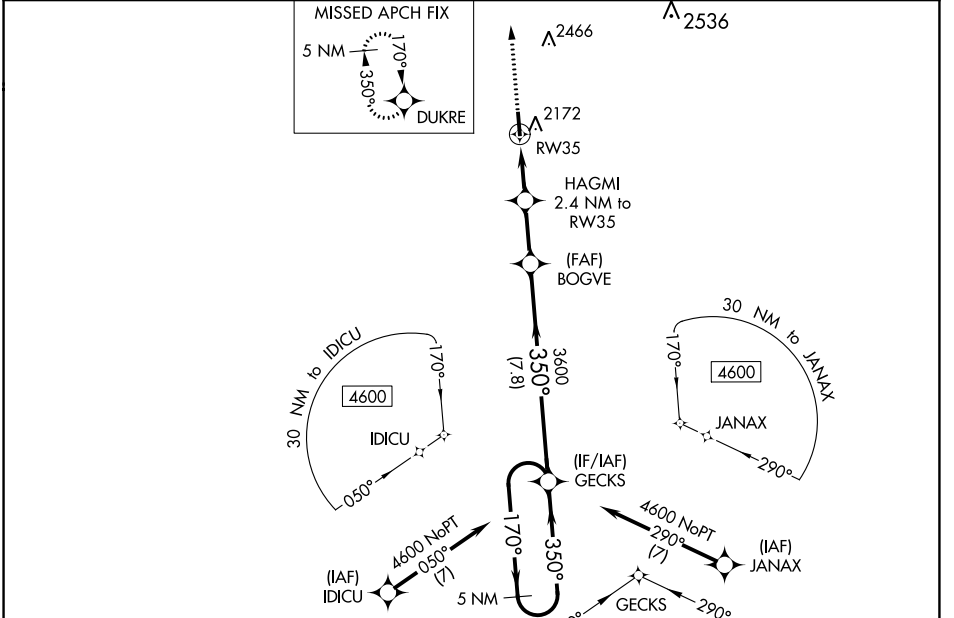
RNAV (GPS) RWY 35

COMANCHE COUNTY (3K8)

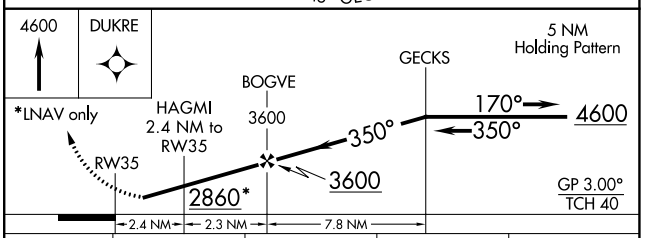
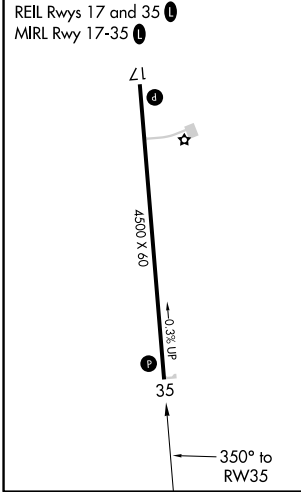
Baro-VNAV NA when using Pratt altimeter setting. DME/DME RNP-0.3 NA. Rwy 35 Helicopter visibility reduction below 3/4 SM NA. When local altimeter setting not received, use Pratt altimeter setting and increase LPV DA to 2554 and LNAV/VNAV DA to 2572 and all MDA 120 feet; increase LPV all Cats visibility 1/8 SM, LNAV/VNAV all Cats visibility 1/8 SM, LNAV Cat C visibility 1/4 SM, and increase Circling Cat C visibility 1/2 SM.

MISSED APPROACH: Climb to 4600 direct DUKRE and hold.

AWOS-3PT 118.05	KANSAS CITY CENTER 126.95 379.2	CTAF 122.9
---------------------------	---	----------------------



ELEV 2086	TDZE 2082
------------------	------------------



CATEGORY	A	B	C	D
LPV DA	2443-1 1/4	361 (400-1 1/4)		NA
LNAV/VNAV DA	2461-1 1/4	379 (400-1 1/4)		NA
LNAV MDA	2540-1	458 (500-1)	2540-1 3/8 458 (500-1 3/8)	NA
CIRCLING	2620-1	534 (600-1)	2940-2 1/2 854 (900-2 1/2)	NA

NC-2, 10 SEP 2020 to 08 OCT 2020

NC-2, 10 SEP 2020 to 08 OCT 2020