

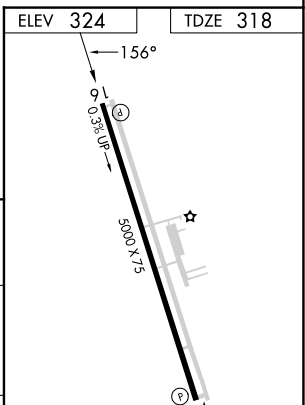
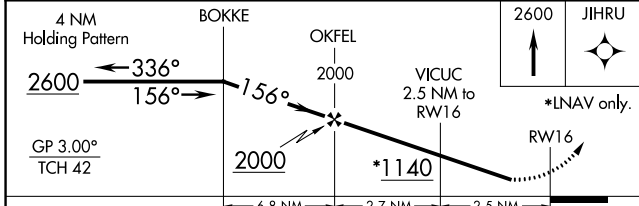
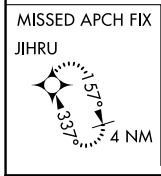
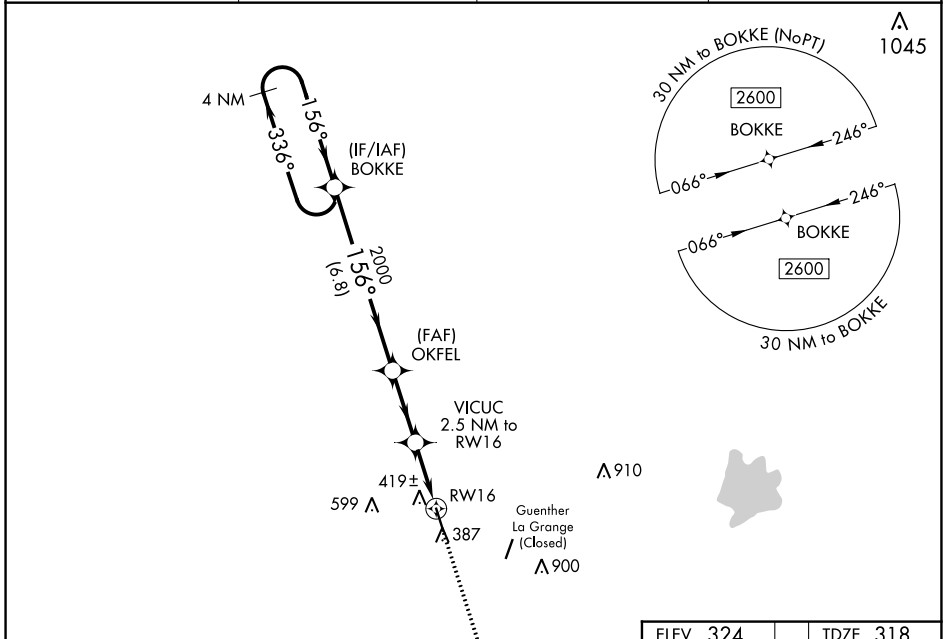
WAAS CH <b>42928</b> <b>W16A</b>	APP CRS <b>156°</b>	Rwy Idg TDZE Apt Elev	<b>5000</b> <b>318</b> <b>324</b>
--	------------------------	-----------------------------	---

# RNAV (GPS) RWY 16

FAYETTE RGNL AIR CENTER (3T5)

RNP APCH.	<p>When local altimeter setting not received, use Giddings-Lee altimeter setting and increase DA 59 feet, all MDA 60 feet, increase LNAV Cat C visibility ¼ mile. Rwy 16 helicopter visibility reduction below ¾ SM NA.</p>	MISSED APPROACH: Climb to 2600 direct JIHRU and hold.
-----------	---	---

AWOS-3 <b>124.175</b>	AUSTIN APP CON <b>120.875 270.25</b>	GCO <b>121.725</b>	UNICOM <b>122.7 (CTAF) 0</b>
--------------------------	---	-----------------------	---------------------------------



CATEGORY	A	B	C	D
LPV DA		568-1 250 (300-1)		NA
LNAV MDA		680-1 362 (400-1)		NA

REIL Rwy 16 and 34  
MIRL Rwy 16-34 0

SC-5, 22 FEB 2024 to 21 MAR 2024

SC-5, 22 FEB 2024 to 21 MAR 2024