

WAAS CH 78238 W17A	APP CRS 174°	Rwy Idg TDZE Apt Elev	4149 1232 1232
--	------------------------	-----------------------------	---

RNAV (GPS) RWY 17

GEORGE L SCOTT MUNI (3Y2)

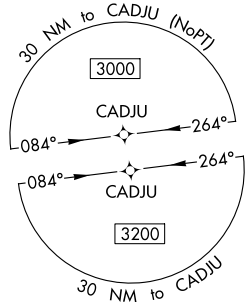
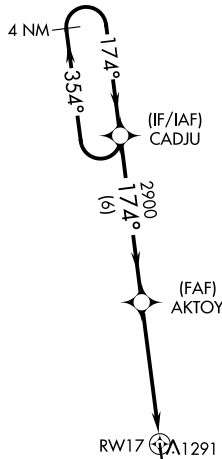
RNP APCH.

NA For uncompensated Baro-VNAV systems, LNAV/VNAV NA below -17°C (2°F) or above 54°C (130°F). Baro-VNAV and VDP NA when using Decorah altimeter setting. Helicopter visibility reduction below 3/4 SM NA. Obtain local altimeter setting on CTAF; when not received, use Decorah altimeter setting and increase LPV and LNAV/VNAV DA to 1533 all Cats, increase all MDA 60 feet, and LNAV Cat C visibility 1/8 mile.

MISSED APPROACH:
Climb to 3200 direct KIRTS and hold.

MINNEAPOLIS CENTER
118.85

UNICOM
122.8 (CTAF)



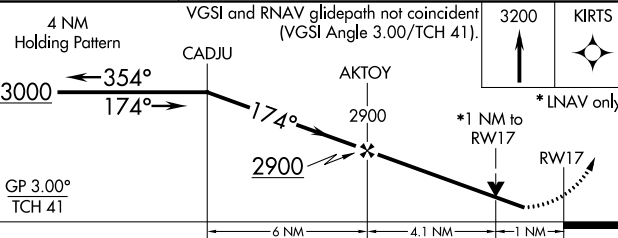
MISSED APCH FIX



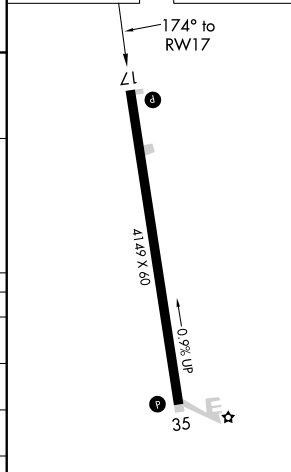
△1726

1545 △

△1617



ELEV 1232	TDZE 1232
-----------	-----------



CATEGORY	A	B	C	D
LPV DA	1482-1	250 (300-1)		NA
LNAV/VNAV DA	1482-1	250 (300-1)		NA
LNAV MDA	1580-1	348 (400-1)		NA
C CIRCLING	1740-1	508 (600-1)	1860-1 3/4 628 (700-1 3/4)	NA

MIRL Rwy 17-35

NC-3, 16 JUN 2022 to 14 JUL 2022

NC-3, 16 JUN 2022 to 14 JUL 2022

WAAS CH 82538 W35A	APP CRS 354°	Rwy Idg TDZE 1223 Apt Elev 1232
--	------------------------	---

RNAV (GPS) RWY 35

GEORGE L SCOTT MUNI (3Y2)

RNP APCH.

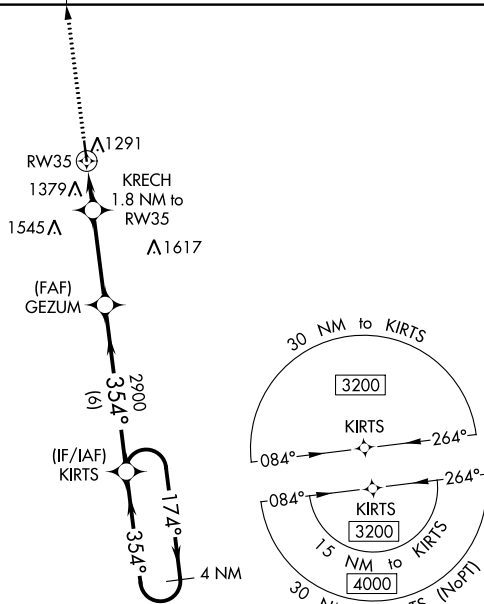
NA For uncompensated Baro-VNAV systems, LNAV/VNAV NA below -17°C (2°F) or above 54°C (130°F). Baro-VNAV and VDP NA when using Decorah altimeter setting. Obtain local altimeter setting on CTAF; when not received, use Decorah altimeter setting and increase LPV DA to 1524 all Cats and all visibilities 1/8 mile, LNAV/VNAV DA to 1773 all Cats and all visibilities 1/8 mile; increase all MDA 60 feet and LNAV Cat C visibility 1/4 mile.

MISSED APPROACH:
Climb to 3000 direct CADJU and hold.

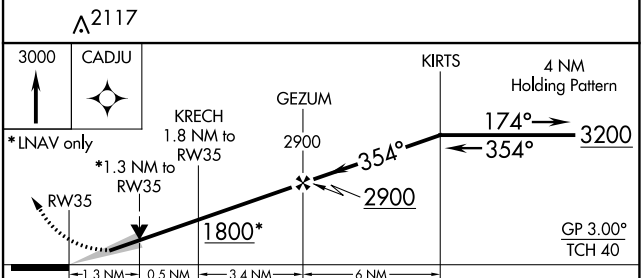
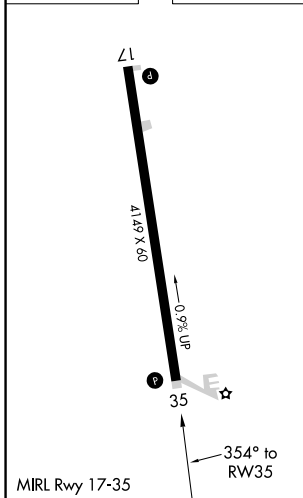
MINNEAPOLIS CENTER
118.85

UNICOM
122.8 (CTAF) 0

MISSED APCH FIX



ELEV 1232	TDZE 1223
-----------	-----------



CATEGORY	A	B	C	D
LPV DA	1473-1 250 (300-1)			NA
LNAV/VNAV DA	1722-1 7/8 499 (500-1 7/8)			NA
LNAV MDA	1640-1	417 (500-1)	1640-1 1/8 417 (500-1 1/8)	NA
C CIRCLING	1740-1	508 (600-1)	1860-1 3/4 628 (700-1 3/4)	NA