

| | | |
|-------------|----------|-------------|
| APP CRS | Rwy Idg | 4802 |
| 086° | TDZE | 605 |
| | Apt Elev | 606 |

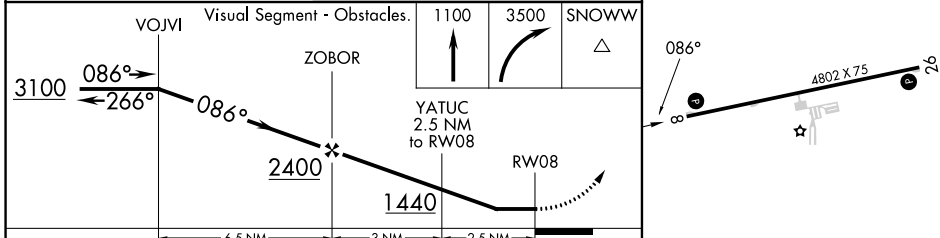
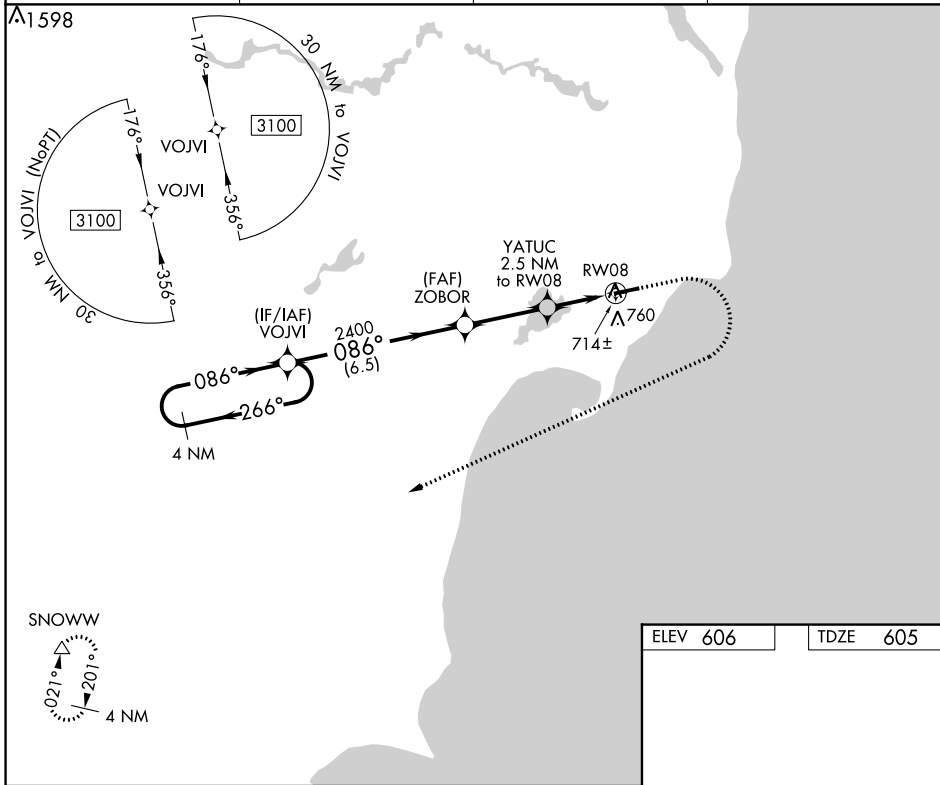
RNAV (GPS) RWY 8

IOSCO COUNTY (6D9)

▼ DME/DME RNP-0.3 NA. Procedure NA at night. Helicopter visibility reduction below 1 SM NA. Use Oscoda altimeter setting: when not received, use Bad Axe altimeter setting and increase all MDA 100 feet; increase LNAV Cats C and D visibilities ¼ mile, increase Circling visibility Cat C ¼ mile.

▲ NA MISSED APPROACH: Climb to 1100 then climbing right turn to 3500 direct SNOWW and hold.

| | | | |
|----------------------------|---|-------------------------------|------------------------|
| OSC AWOS-3 118.7 | MINNEAPOLIS CENTER 125.475 269.45 | UNICOM 122.8 (CTAF) | 122.85 0 |
|----------------------------|---|-------------------------------|------------------------|



| CATEGORY | A | B | C | D |
|-------------------|----------|-------------|--------------|-------------------------|
| LNAV MDA | 1000 - 1 | 395 (400-1) | 1000 - 1 1/8 | 395 (400-1 1/8) |
| C CIRCLING | 1120 - 1 | 514 (600-1) | 1120 - 1 1/2 | 1160 - 2 554 (600-2) |

REIL Rwys 8 and 26 **0**
MIRL Rwy 8-26 **0**

EC-1, 22 FEB 2024 to 21 MAR 2024

EC-1, 22 FEB 2024 to 21 MAR 2024