

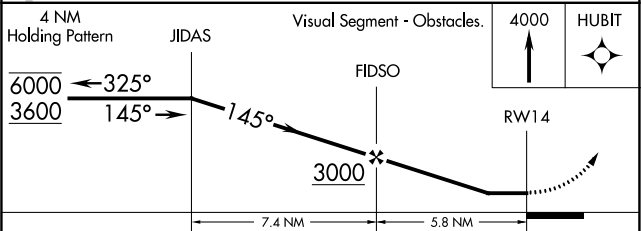
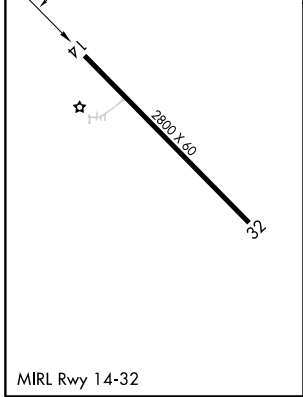
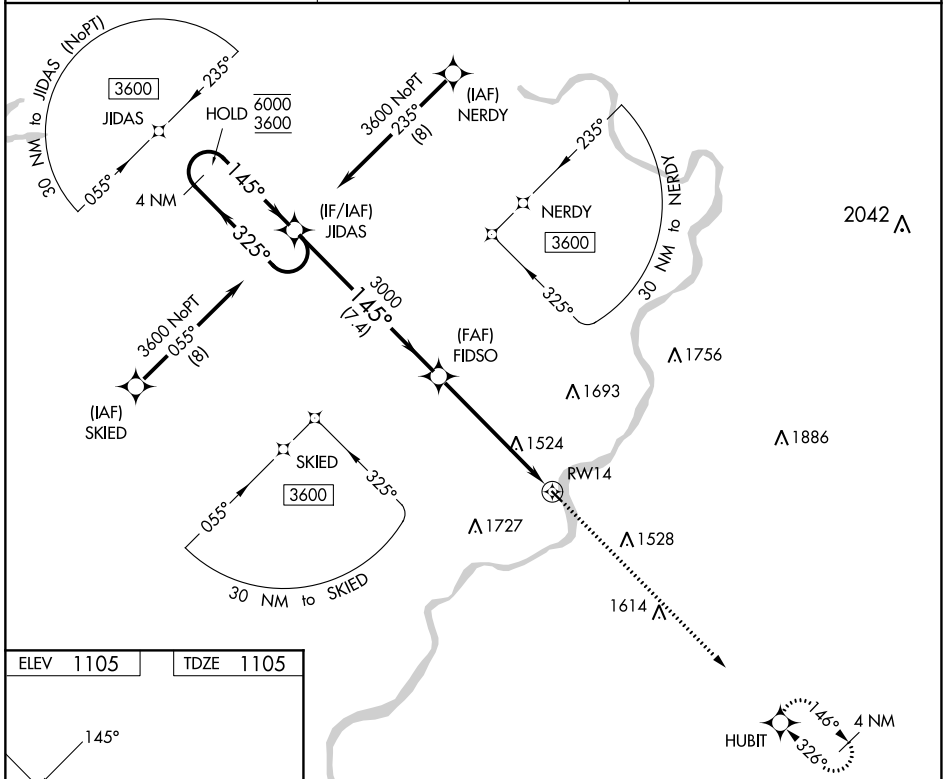
WAAS CH 97343 W14A	APP CRS 145°	Rwy Idg TDZE 1105 Apt Elev 1105	2800
--	------------------------	---	-------------

RNAV (GPS) RWY 14

MCVILLE (6P7)

RNP APCH.	MISSED APPROACH: Climb to 4000 direct HUBIT and hold.
<p>▼ Procedure NA at night. Rwy 14 helicopter visibility reduction below 1 SM NA. Use Pittsburgh/Butler Rgnl altimeter setting.</p>	

BTP AWOS-3PT 121.45	JOHNSTOWN APP CON ★ 121.2	UNICOM 123.0 (CTAF)
-------------------------------	-------------------------------------	-------------------------------



CATEGORY	A	B	C	D
LP MDA	1840-1	735 (800-1)	NA	
LNAV MDA	1840-1	735 (800-1)	NA	
CIRCLING	1860-1 755 (800-1)	1880-1 775 (800-1)	NA	

NE-4, 22 FEB 2024 to 21 MAR 2024

NE-4, 22 FEB 2024 to 21 MAR 2024

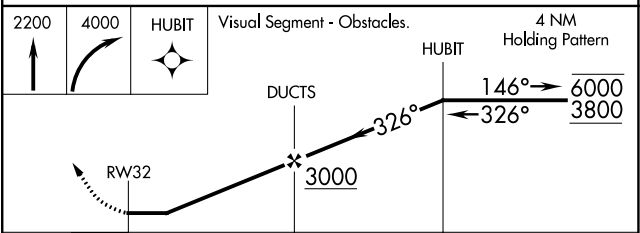
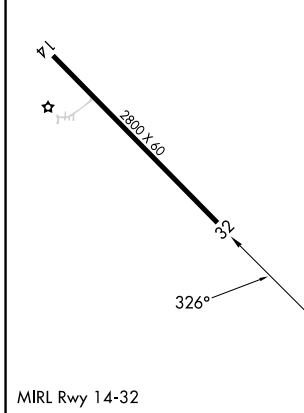
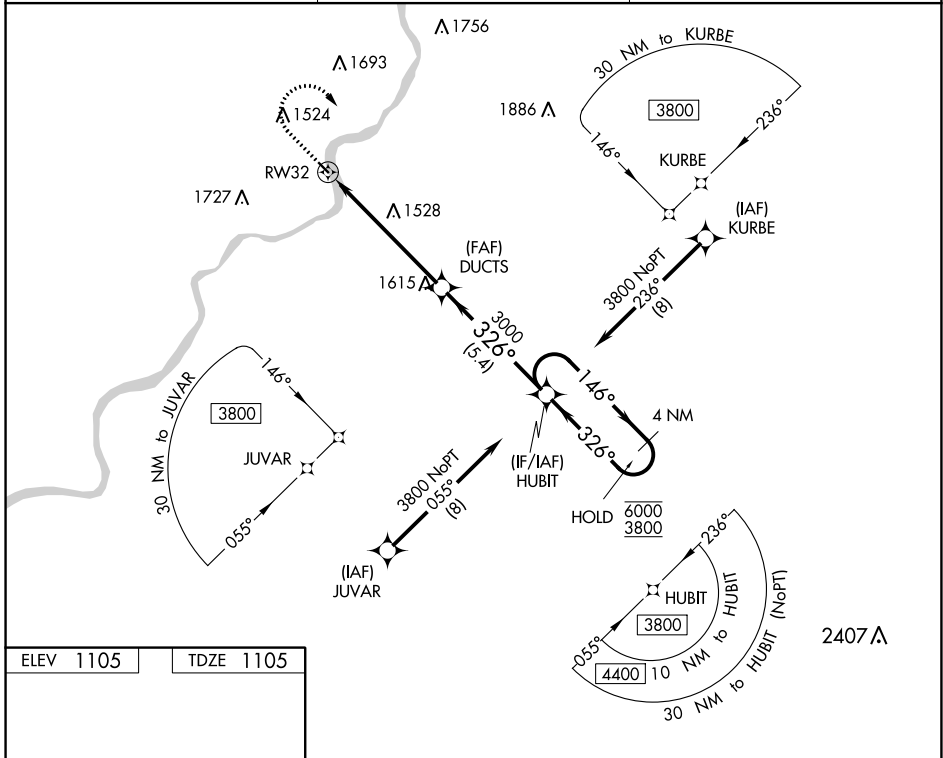
WAAS CH 50143 W32A	APP CRS 326°	Rwy Idg TDZE Apt Elev	2800 1105 1105
--	------------------------	-----------------------------	---

RNAV (GPS) RWY 32

MCVILLE (6P7)

RNP APCH. ▼ Procedure NA at night. Rwy 32 helicopter visibility reduction below 1 SM NA. Use Pittsburgh/Butler Rgnl altimeter setting.	MISSED APPROACH: Climb to 2200 then climbing right turn to 4000 direct HUBIT and hold.
---	--

BTP AWOS-3PT 121.45	JOHNSTOWN APP CON ★ 121.2	UNICOM 123.0 (CTAF)
-------------------------------	-------------------------------------	-------------------------------



CATEGORY	A	B	C	D
LP MDA	1840-1	735 (800-1)		NA
LNAV MDA	1840-1	735 (800-1)		NA
<input checked="" type="checkbox"/> CIRCLING	1860-1 755 (800-1)	1880-1 775 (800-1)		NA

NE-4, 22 FEB 2024 to 21 MAR 2024

NE-4, 22 FEB 2024 to 21 MAR 2024