

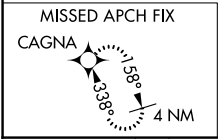
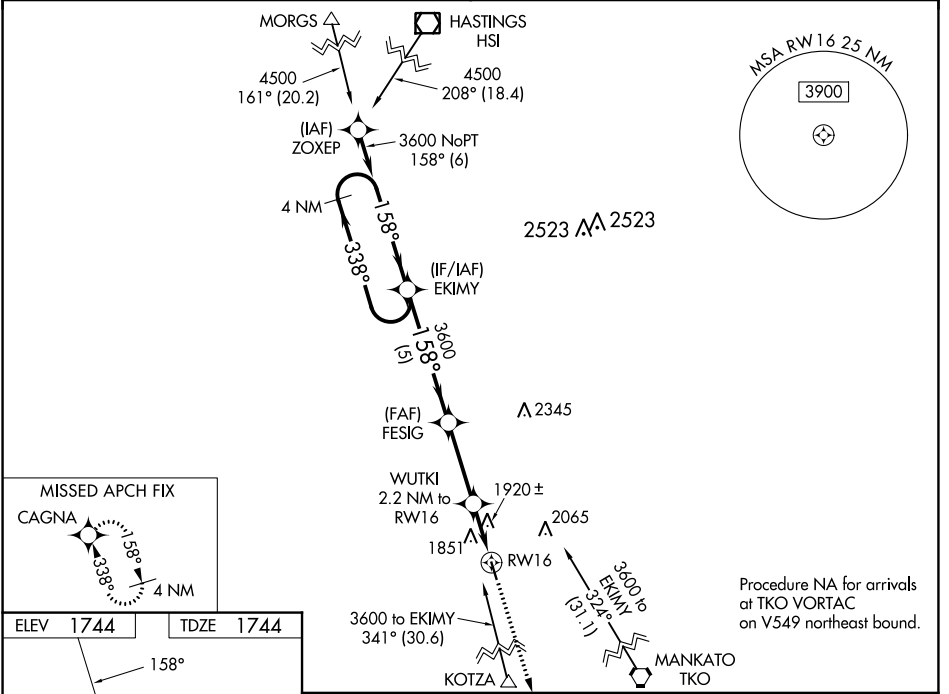
WAAS CH 82027 W16A	APP CRS 158°	Rwy Idg TDZE 1744 Apt Elev 1744	3702
--	------------------------	---	-------------

RNAV (GPS) RWY 16

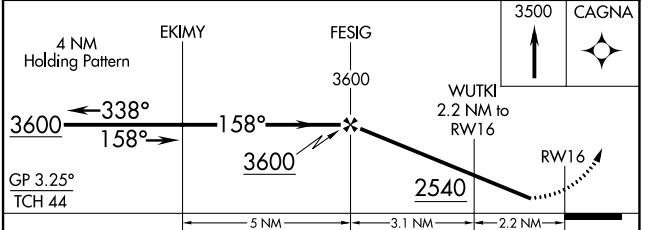
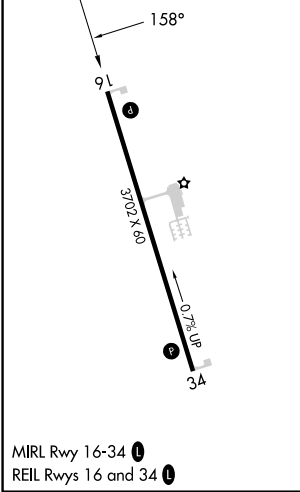
RED CLOUD MUNI (7V7)

RNP APCH - GPS.	<p>⚠ Baro-VNAV NA. Use Smith Center altimeter setting, when not received use Hastings altimeter setting and increase all DA 44 feet and all MDA 60 feet; increase LPV Cats A/B visibility 1/8 mile and LNAV/VNAV Cats A/B visibility 1/4 mile. Rwy 16 helicopter visibility reduction below 3/4 SM NA.</p>	MISSED APPROACH: Climb to 3500 direct CAGNA and hold.
-----------------	---	---

MINNEAPOLIS CENTER 119.4 278.8	CTAF 122.9
--	----------------------



ELEV 1744	TDZE 1744
-----------	-----------



CATEGORY	A	B	C	D
LPV DA	2075-1	331 (400-1)		NA
LNAV/VNAV DA	2198-1 3/8	454 (500-1 3/8)		NA
LNAV MDA	2240-1	496 (500-1)		NA
CIRCLING	2280-1 536 (600-1)	2300-1 556 (600-1)		NA

NC-2, 22 FEB 2024 to 21 MAR 2024

NC-2, 22 FEB 2024 to 21 MAR 2024

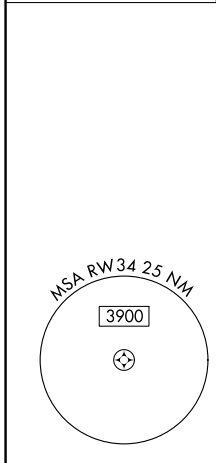
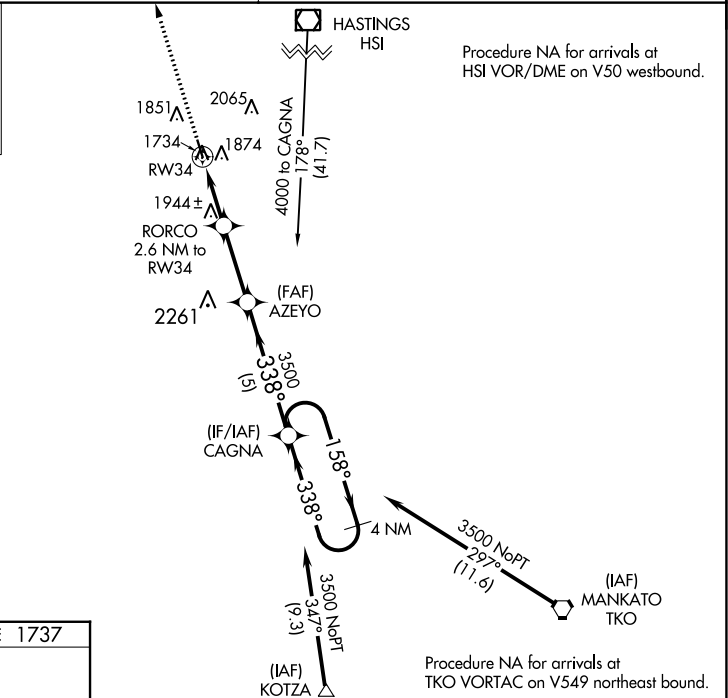
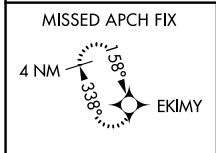
WAAS CH 42727 W34A	APP CRS 338°	Rwy Idg TDZE Apt Elev	3702 1737 1744
--	------------------------	-----------------------------	---

RNAV (GPS) RWY 34

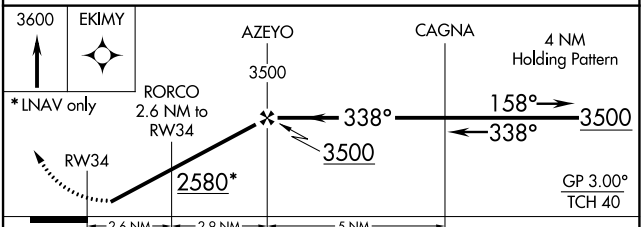
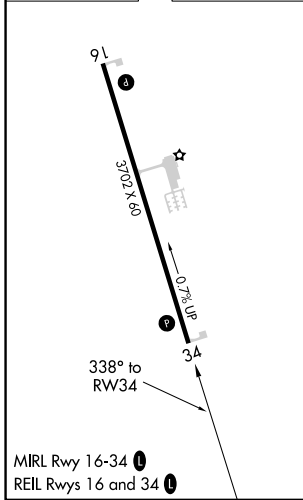
RED CLOUD MUNI (7V7)

RNP APCH.	Baro-VNAV NA. Use Smith Center Muni altimeter setting, when not received use Hastings altimeter setting and increase all DA 44 feet and all MDA 60 feet; increase LPV Cats A/B visibility ¼ mile and LNAV/VNAV Cats A/B visibility ⅓ mile.	MISSED APPROACH: Climb to 3600 direct EKIMY and hold.
-----------	--	---

MINNEAPOLIS CENTER 119.4 278.8	CTAF 122.90
--	-----------------------



ELEV 1744	TDZE 1737
-----------	-----------



CATEGORY	A	B	C	D
LPV DA	2047-1	310 (400-1)		NA
LNAV/VNAV DA	2096-1⅛	359 (400-1⅛)		NA
LNAV MDA	2260-1	523 (600-1)		NA
CIRCLING	2280-1 536 (600-1)	2300-1 556 (600-1)		NA

NC-2, 22 FEB 2024 to 21 MAR 2024

NC-2, 22 FEB 2024 to 21 MAR 2024