

APP CRS	Rwy Idg	<b>2943</b>
<b>094°</b>	TDZE	<b>818</b>
	Apt Elev	<b>818</b>

# RNAV (GPS) RWY 9

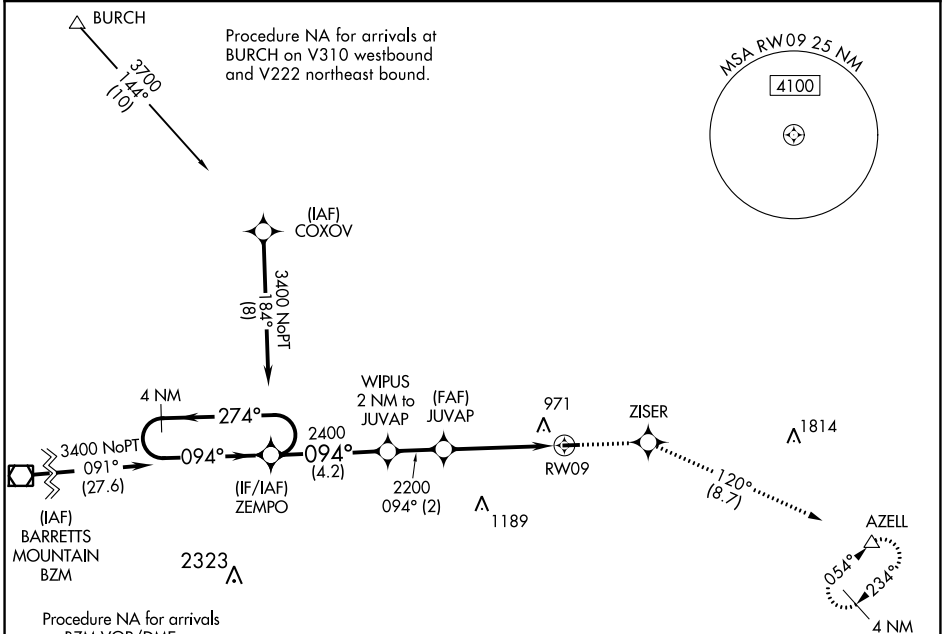
TWIN LAKES (8A7)

RNP APCH.

**NA** Use Davidson County Exec altimeter setting; when not received, use Smith Reynolds altimeter setting and increase all MDA 40 feet. Procedure NA at night. Rwy 9 helicopter visibility reduction below 1 SM NA.

MISSED APPROACH: Climb to 3000 direct ZISER and on track 120° to AZELL and hold.

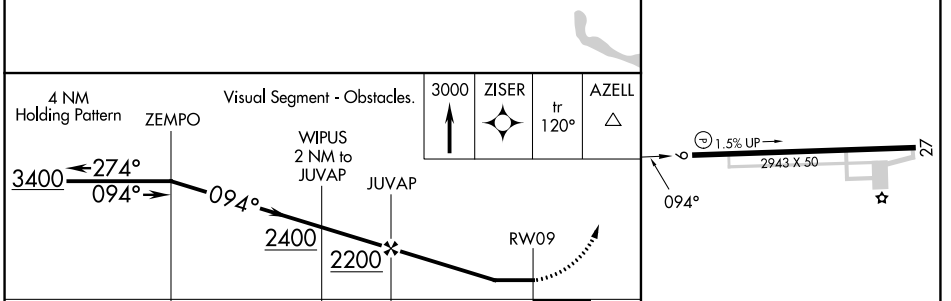
EXX AWOS-3 <b>119.825</b>	GREENSBORO APP CON <b>124.35 269.225</b>	UNICOM <b>122.7 (CTAF)</b>
------------------------------	---	-------------------------------



SE-2, 22 FEB 2024 to 21 MAR 2024

SE-2, 22 FEB 2024 to 21 MAR 2024

ELEV 818	TDZE 818
----------	----------



CATEGORY	A	B	C	D
LNAV MDA	1320-1	502 (600-1)	NA	
CIRCLING	1380-1 562 (600-1)	1400-1 582 (600-1)	NA	

IIRL Rwy 9-27