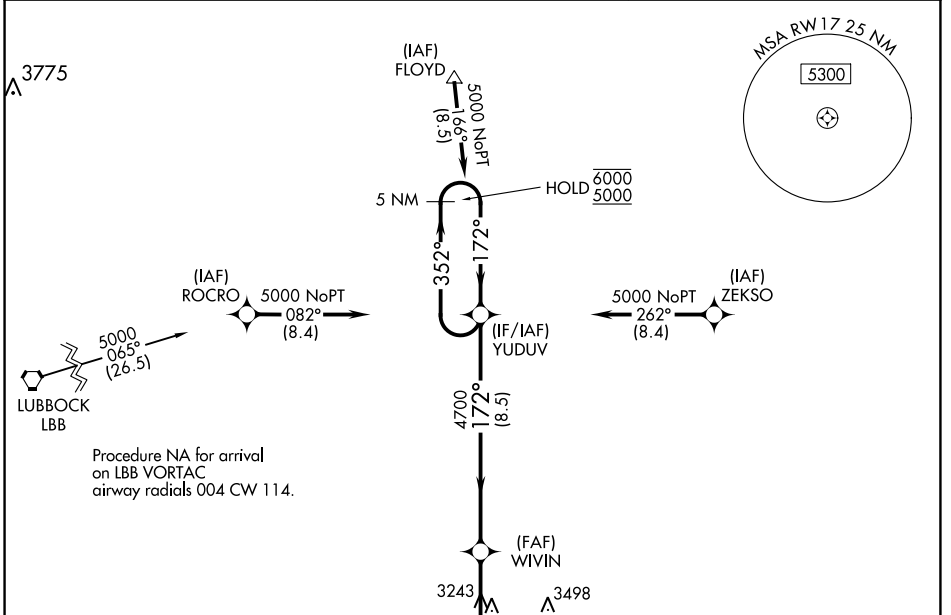


WAAS CH 82722 W17A	APP CRS 172°	Rwy Idg TDZE Apt Elev	3600 3018 3018
--	------------------------	-----------------------------	---

RNAV (GPS) RWY 17

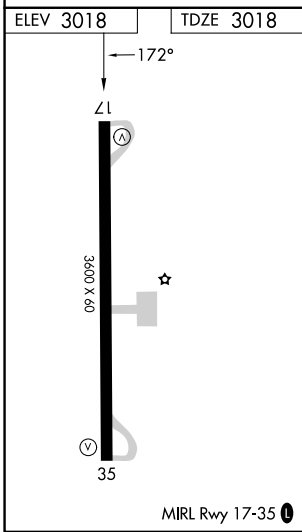
CROSBYTON MUNI (8F3)

RNP APCH.		MISSED APPROACH: Climb to 5000 direct CEGUT and hold.
<p>Procedure NA at night.</p> <p>Rwy 17 helicopter visibility reduction below 1 SM NA.</p> <p>Use Lubbock altimeter setting.</p>		
LBB ASOS 125.3	LUBBOCK APP CON 119.2 351.8	UNICOM 122.8 (CTAF) 0



SC-2, 22 FEB 2024 to 21 MAR 2024

SC-2, 22 FEB 2024 to 21 MAR 2024



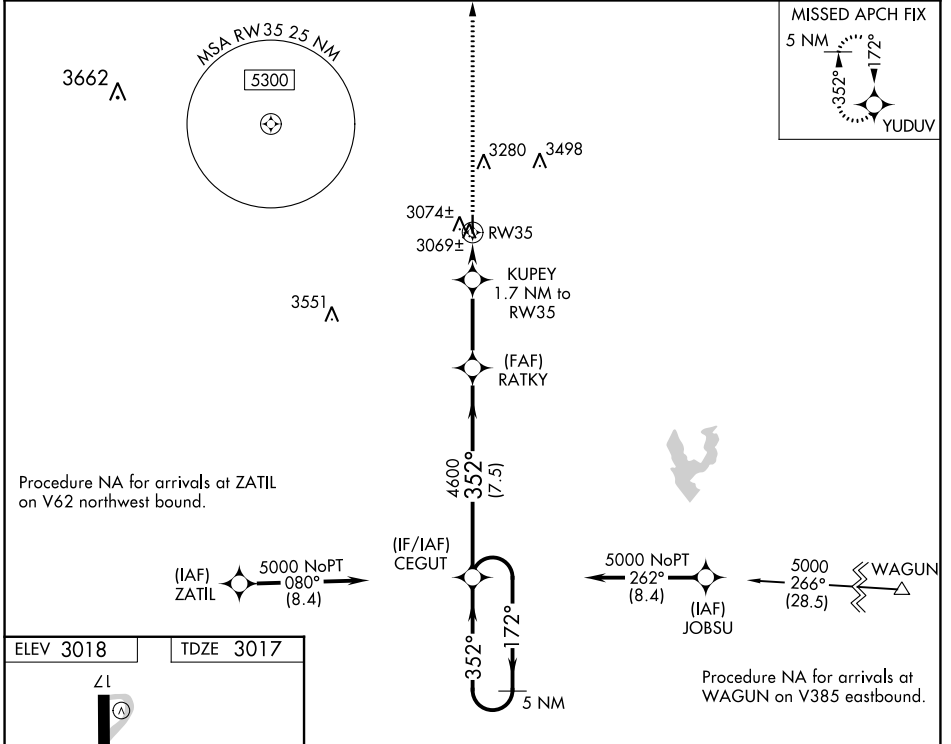
ELEV 3018		TDZE 3018	
<p>3551</p> <p>5000</p> <p>CEGUT</p>		<p>MISSED APCH FIX</p> <p>CEGUT</p>	
<p>352°</p> <p>5 NM Holding Pattern</p>		<p>YUDUV</p> <p>5 NM Holding Pattern</p>	
<p>WIVIN</p> <p>4700</p> <p>4.00° TCH 40</p> <p>3.9 NM</p> <p>8.5 NM</p>		<p>352°</p> <p>172°</p> <p>6000</p> <p>5000</p>	
CATEGORY	A	B	C
LP MDA	3660-1	642 (700-1)	NA
LNAV MDA	3700-1	682 (700-1)	NA

WAAS CH 53423 W35A	APP CRS 352°	Rwy Idg TDZE Apt Elev	3600 3017 3018
--	------------------------	-----------------------------	---

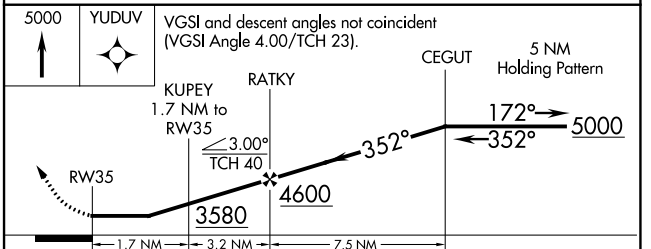
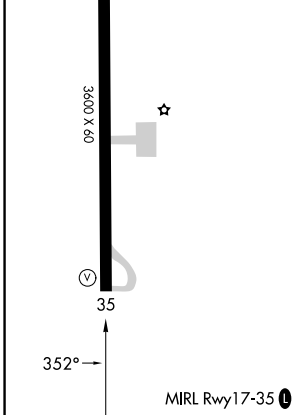
RNAV (GPS) RWY 35

CROSBYTON MUNI (8F3)

RNP APCH.	<p>▼ Use Lubbock altimeter setting. Procedure NA at night.</p> <p>▲ NA Rwy 35 helicopter visibility reduction below 1 SM NA.</p>	MISSED APPROACH: Climb to 5000 direct YUDUV and hold.
LBB ASOS 125.3	LUBBOCK APP CON 119.2 351.8	UNICOM 122.8 (CTAF) 0



ELEV 3018	TDZE 3017
-----------	-----------



CATEGORY	A	B	C	D
LP MDA	3440-1	423 (500-1)	3440-1¼ 423 (500-1¼)	NA
LNAV MDA	3440-1	423 (500-1)	3440-1¼ 423 (500-1¼)	NA
CIRCLING	3500-1 482 (500-1)	3740-1 722 (800-1)	3920-2¾ 902 (1000-2¾)	NA

SC-2, 22 FEB 2024 to 21 MAR 2024

SC-2, 22 FEB 2024 to 21 MAR 2024