

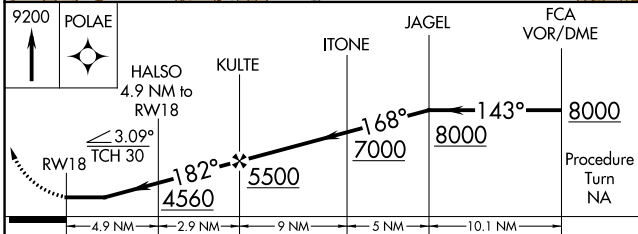
APP CRS	Rwy Idg	<b>4195</b>
<b>182°</b>	TDZE	<b>2941</b>
	Apt Elev	<b>2941</b>

# RNAV (GPS) RWY 18

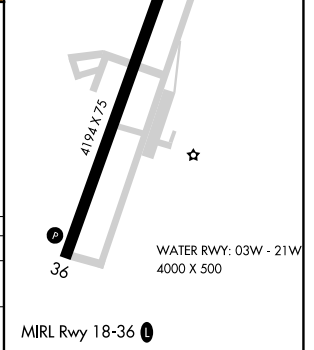
POLSON (8S1)

<p><b>NA</b> Procedure NA at night. DME/DME RNP-0.3 NA. Use Glacier Park Intl altimeter setting. Helicopter visibility reduction below 1 SM NA.</p>	<p>MISSED APPROACH: Climb to 9200 direct POLAE and hold.</p>
---	--

GPI ASOS <b>132.625</b>	SALT LAKE CENTER <b>127.075 244.875</b>	UNICOM <b>122.8 (CTAF) 0</b>
----------------------------	--	---------------------------------



CATEGORY	A	B	C	D
LNAV MDA	4480-1¼ 1539 (1600-1¼)	4480-1½ 1539 (1600-1½)	NA	NA
CIRCLING	4480-1¼ 1539 (1600-1¼)	4480-1½ 1539 (1600-1½)	NA	NA



NW-1, 22 FEB 2024 to 21 MAR 2024

NW-1, 22 FEB 2024 to 21 MAR 2024

APP CRS	Rwy Idg	<b>4195</b>
<b>013°</b>	TDZE	<b>2941</b>
	Apt Elev	<b>2941</b>

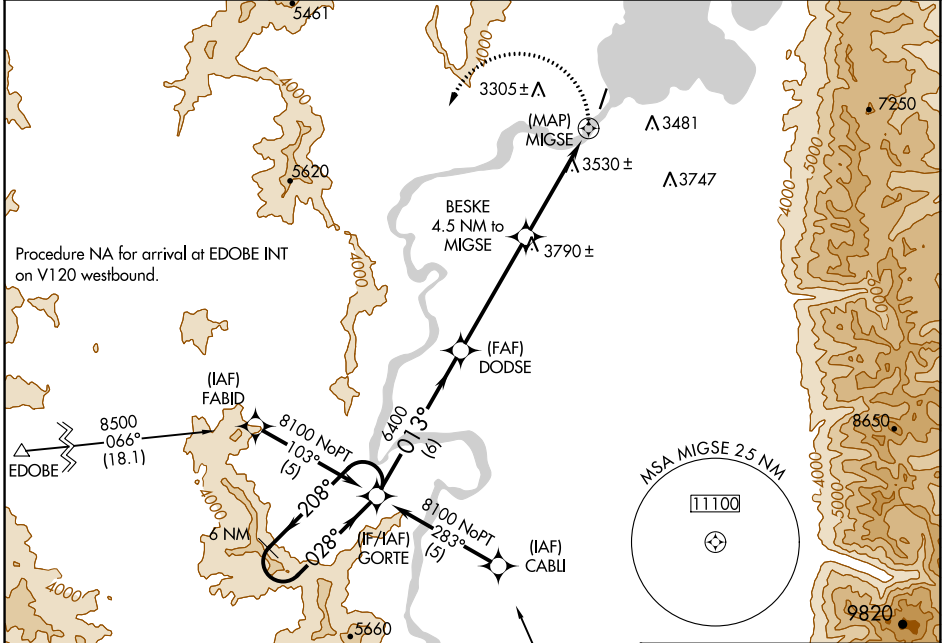
# RNAV (GPS) RWY 36

POLSON (8S1)

**NA** Procedure NA at night. DME/DME RNP-0.3 NA. Use Glacier Park Inlt altimeter setting. Helicopter visibility reduction below 1 SM NA.

**MISSED APPROACH:** Climbing left turn to 9000 direct GORTE WP and hold.

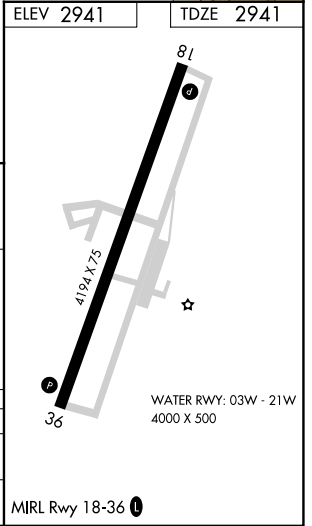
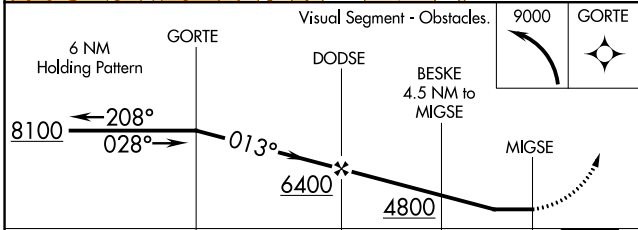
GPI ASOS <b>132.625</b>	SALT LAKE CENTER <b>127.075 244.875</b>	UNICOM <b>122.8 (CTAF) 0</b>
----------------------------	--	---------------------------------



NW-1, 22 FEB 2024 to 21 MAR 2024

NW-1, 22 FEB 2024 to 21 MAR 2024

ELEV 2941	TDZE 2941
-----------	-----------



CATEGORY	A	B	C	D
LNAV	4340-1¼ 1399 (1400-1¼)	4340-1½ 1399 (1400-1½)	NA	
CIRCLING	4340-1¼ 1399 (1400-1¼)	4340-1½ 1399 (1400-1½)	NA	