

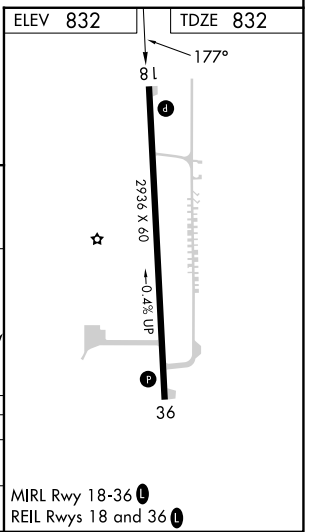
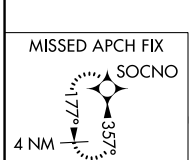
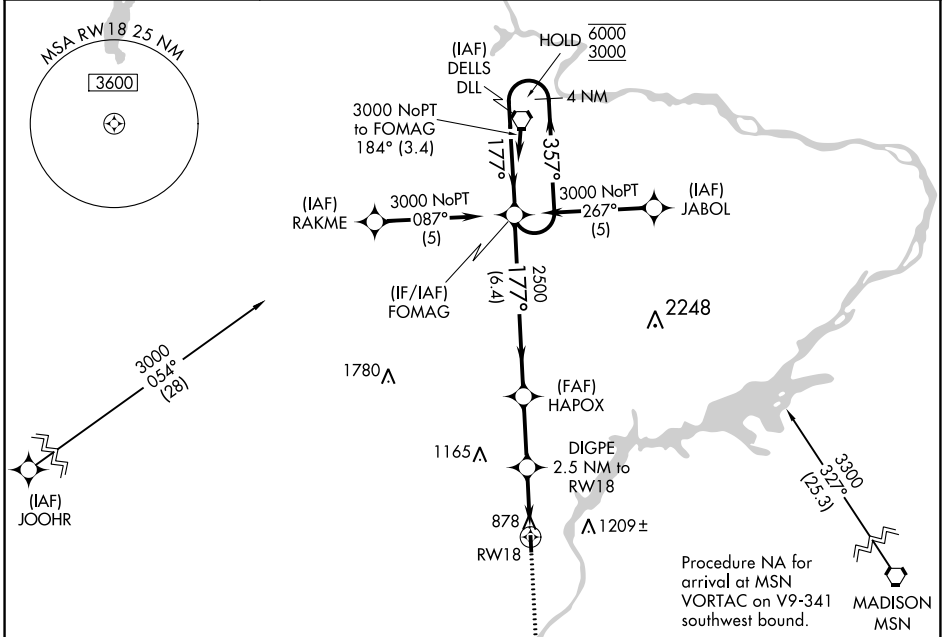
APP CRS	Rwy Idg	2936
177°	TDZE	832
	Apt Elev	832

RNAV (GPS) RWY 18

SAUK/PRAIRIE (91C)

RNP APCH	MISSED APPROACH: Climb to 3200 direct SOCNO and hold.
▼ ▲ NA	Use Madison altimeter setting.

MSN ASOS 124.65 278.3	MADISON APP CON★ 135.45 343.7	CTAF 122.9
---------------------------------	---	----------------------



4 NM Holding Pattern	VGSi and descent angles not coincident (VGSi Angle 3.00/TCH 26).		
FOMAG	HAPOX	DIGPE	RWY 18
6000 ← 357°	2500	1660	
3000 → 177°	3.00° TCH 40	2.5 NM to RWY 18	2.5 NM
	6.4 NM	2.6 NM	2.5 NM

CATEGORY	A	B	C	D
LNAV MDA	1260-1	428 (500-1)		NA
CIRCLING	1400-1 568 (600-1)	1460-1 628 (700-1)		NA

MIRL Rwy 18-36
REIL Rwy 18 and 36

EC-3, 22 FEB 2024 to 21 MAR 2024

EC-3, 22 FEB 2024 to 21 MAR 2024