


WAAS CH <b>61012</b> <b>W18A</b>	APP CRS <b>177°</b>	Rwy Idg TDZE <b>1016</b> Apt Elev <b>1016</b>
--	------------------------	---

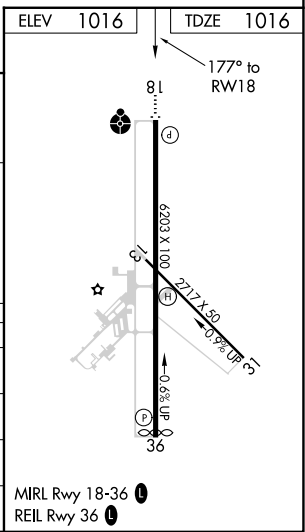
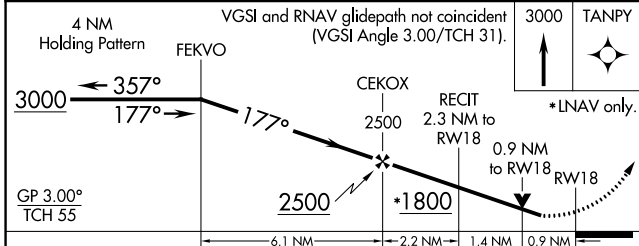
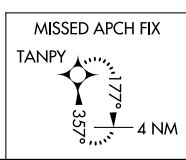
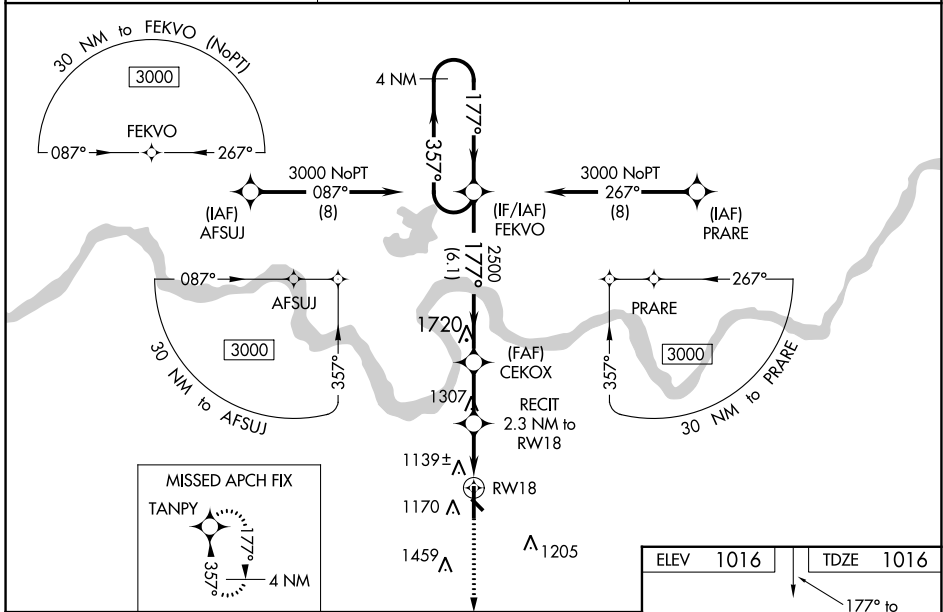
# RNAV (GPS) RWY 18

ADA RGNL (ADH)

**⚠** Inop table does not apply to LPV. For uncompensated Baro-VNAV systems, LNAV/VNAV NA below -17°C (2°F) or above 54°C (130°F). Baro-VNAV and VDP NA when using Seminole altimeter setting. Circling Rwy 31 NA at night. Rwy 18 helicopter visibility reduction below 3/4 SM NA. DME/DME RNP-0.3 NA. For inop ALS, increase LNAV/VNAV Cats A and B visibility 1/2 SM. For inop ALS when using Seminole altimeter setting; increase LPV all Cats visibility to 1 SM and LNAV/VNAV all Cats to 1/2 SM. When local altimeter setting not received, use Seminole altimeter setting: increase LPV DA to 1332 feet, LNAV/VNAV DA to 1386 and all MDA 80 feet. Increase LPV all Cats visibility 1/2 SM, increase LNAV/VNAV all Cats and LNAV Cat C and D visibility 1/2 SM. Increase Circling Cats C/D visibility 1/2 SM.

**ODALS**  **MISSED APPROACH:**  
Climb to 3000 direct TANPY and hold.

AWOS-3 <b>118.725</b>	FORT WORTH CENTER <b>132.2 338.35</b>	UNICOM <b>122.8 (CTAF) 0</b>
--------------------------	--	---------------------------------



CATEGORY	A	B	C	D
LPV DA	1266-3/4		250 (300-3/4)	
LNAV/VNAV DA	1320-7/8		304 (400-7/8)	
LNAV MDA	1400-3/4 384 (400-3/4)		1400-1 384 (400-1)	
<b>C</b> CIRCLING	1520-1 504 (600-1)	1640-1 624 (700-1)	1820-2 1/4 804 (900-2 1/4)	1820-2 1/2 804 (900-2 1/2)

SC-1, 22 FEB 2024 to 21 MAR 2024

SC-1, 22 FEB 2024 to 21 MAR 2024