

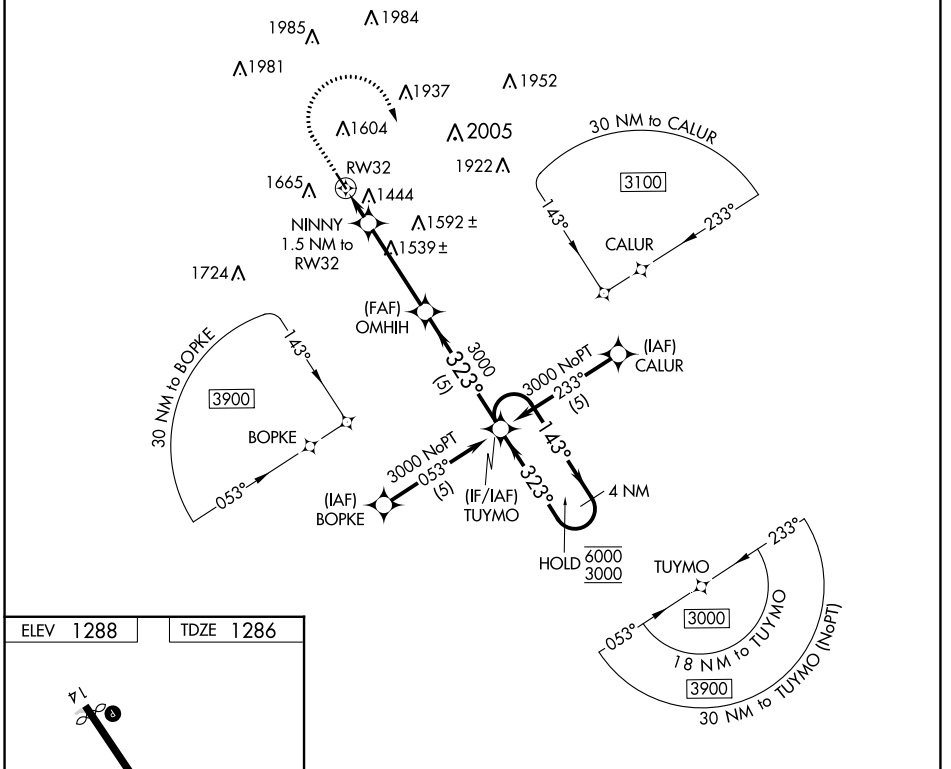
APP CRS	Rwy Idg	<b>3641</b>
<b>323°</b>	TDZE	<b>1286</b>
	Apt Elev	<b>1288</b>

# RNAV (GPS) RWY 32

AUDUBON COUNTY (ADU)

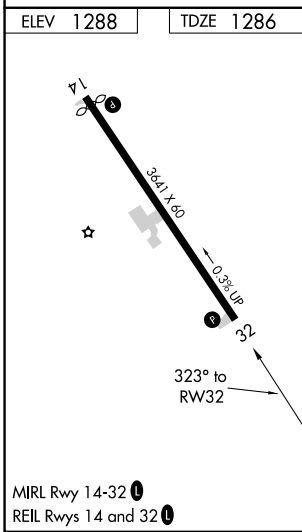
RNP APCH.	MISSED APPROACH: Climb to 2500 then climbing right turn to 3000 direct TUYMO and hold.
<p>▼ Circling Rwy 14 NA at night.</p> <p>▲ Rwy 32 helicopter visibility reduction below 3/4 SM NA. When local altimeter setting not received, procedure NA.</p>	

AWOS-3 <b>118.075</b>	MINNEAPOLIS CENTER <b>119.6 290.4</b>	UNICOM <b>122.8 (CTAF) ①</b>
--------------------------	--	---------------------------------



NC-3, 22 FEB 2024 to 21 MAR 2024

NC-3, 22 FEB 2024 to 21 MAR 2024



2500	3000	TUYMO	VGSI and descent angles not coincident (VGSI Angle 3.25/TCH 40).	
↑	↷	✧		
<p>NINNY 1.5 NM to RW32</p> <p>OMHIIH</p> <p>TUYMO 4 NM Holding Pattern</p>		<p>3000 323° 143° 6000</p> <p>3000</p>		
<p>1.5 NM</p> <p>3.8 NM</p> <p>5 NM</p>				
CATEGORY	A	B	C	D
LNAV MDA	1760-1	474 (500-1)	NA	
CIRCLING	1980-1	692 (700-1)	NA	