

CAMP SPRINGS, MARYLAND

# RNAV (GPS) RWY 19R

WAAS CH 52204 W19B	APCH CRS 190°	Rwy ldg TDZE Arprt Elev	9318 274 280
--------------------------	------------------	-------------------------------	--------------------

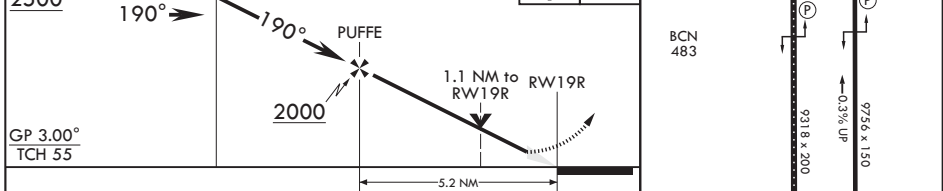
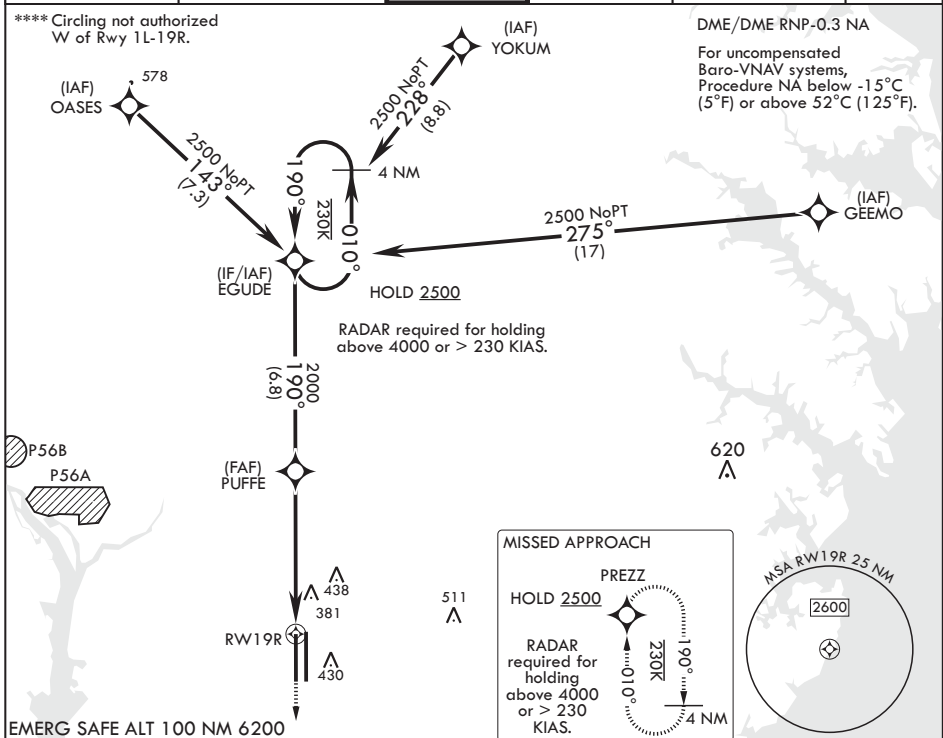
AL-561 (USAF)

JOINT BASE ANDREWS (KADW)

**▼** \* When ALS inop, increase RVR to 40, vis to 3/4. When TDZ/CL lights inop, increase RVR to 24.  
 \*\* When ALS inop, increase vis to 1 1/4 miles.  
 \*\*\* When ALS inop, increase CAT AB RVR to 55, vis to 1 mile; CAT CDE vis to 1 1/4 miles.

**ALSF-2** MISSED APPROACH: Climb to 2500 direct PREZZ and hold.

ATIS 133.675 251.05	POTOMAC APP CON 128.0 335.5	TOWER 118.4 349.0	GND CON 121.8 275.8	CLNC DEL 127.55 285.475	CPDLC
------------------------	--------------------------------	----------------------	------------------------	----------------------------	-------



CATEGORY	A	B	C	D	E
LPV DA*		474/18	200	(200-½)	
LNAV/VNAV DA**		697/40	423	(500-¾)	
LNAV MDA***	700/24	426 (500-½)	700/40	426 (500-¾)	
<b>C</b> CIRCLING****	780-1	500 (500-1)	780-1½ 500 (500-1½)	840-2	560 (600-2)

HIRL all Rwys  
 TDZL/CL Rwys 1L, 19R

CAMP SPRINGS, MARYLAND

38°49'N - 76°52'W

JOINT BASE ANDREWS (KADW)

Amdt 1 18MAY23

# RNAV (GPS) RWY 19R

NE-3, 22 FEB 2024 to 21 MAR 2024

NE-3, 22 FEB 2024 to 21 MAR 2024