

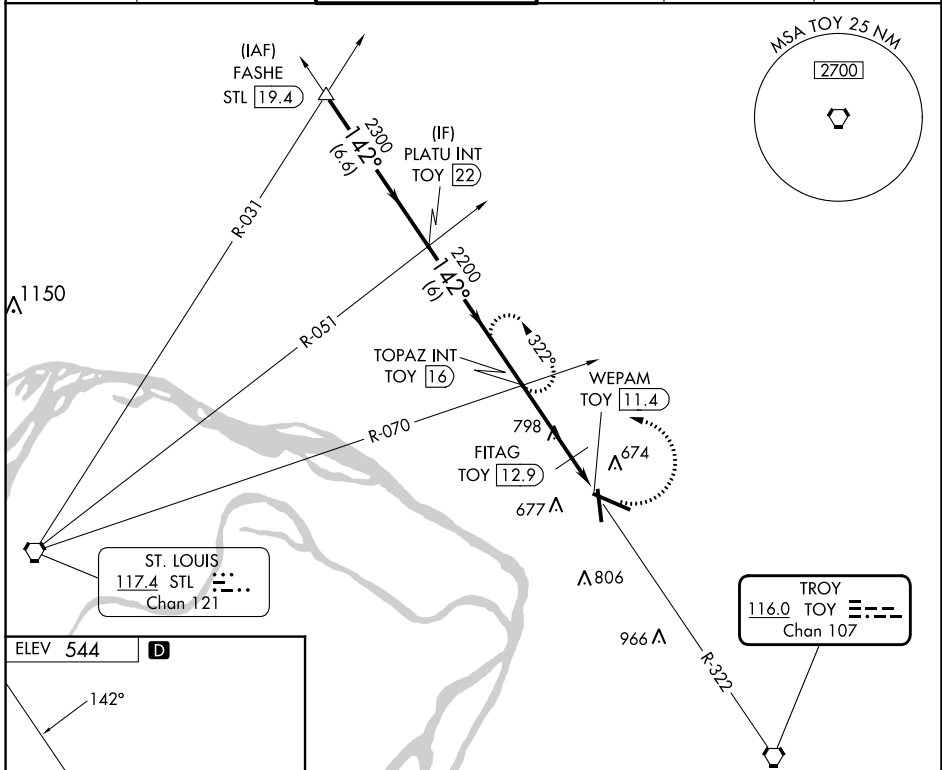
VORTAC TOY <b>116.0</b> Chan 107	APP CRS <b>142°</b>	Rwy Idg TDZE Apt Elev	<b>N/A</b> <b>N/A</b> <b>544</b>
--	------------------------	-----------------------------	--

**VOR-A**  
ST LOUIS RGNL (A.L.N)

**⚠** When local allimeter setting not received, use St Louis Lambert Intl allimeter setting and increase all MDA 60 feet and increase Circling Cat C/D visibility ¼ SM. When VGSi inop, Circling to Rwy 17/35 NA at night.

MISSED APPROACH: Climbing left turn to 2200 via TOY R-322 to TOPAZ INT/TOY 16 DME and hold.

ATIS <b>128.0</b>	ST LOUIS APP CON <b>124.2 353.9</b>	REGIONAL TOWER* <b>126.0 (CTAF) 0 239.0</b>	GND CON <b>120.2</b>	CLNC DEL <b>120.2</b> (when tower closed)	UNICOM <b>122.95</b>
----------------------	--	--	-------------------------	---	-------------------------



ELEV 544 **D**

REIL Rwy 11 **Ⓛ**  
HIRL Rwy 11-29 **Ⓛ**  
MIRL Rwy 17-35 **Ⓛ**

FAF to MAP 4.6 NM

Knots	60	90	120	150	180
Min:Sec	4:36	3:04	2:18	1:50	1:32

	FASHE STL 19.4 2700	*1160 when using St Louis Lambert Intl allimeter setting. PLATU INT TOY 22 2300	TOPAZ INT TOY 16 FITAG TOY 12.9 2200	2200 TOY R-322 WEPAM TOY 11.4	TOPAZ INT
Procedure Turn	NA				
CATEGORY	A	B	C	D	
CIRCLING	1100-1	556 (600-1)	1160-1¾ 616 (700-1¾)	1200-2 656 (700-2)	
	FITAG FIX MINIMUMS				
CIRCLING	1000-1	456 (500-1)	1160-1¾ 616 (700-1¾)	1200-2 656 (700-2)	

EC-3, 22 FEB 2024 to 21 MAR 2024

EC-3, 22 FEB 2024 to 21 MAR 2024