

APP CRS	Rwy Idg	4000
052°	TDZE	990
	Apt Elev	995

RNAV (GPS) RWY 5

TRI-STATE STEUBEN COUNTY (ANQ)

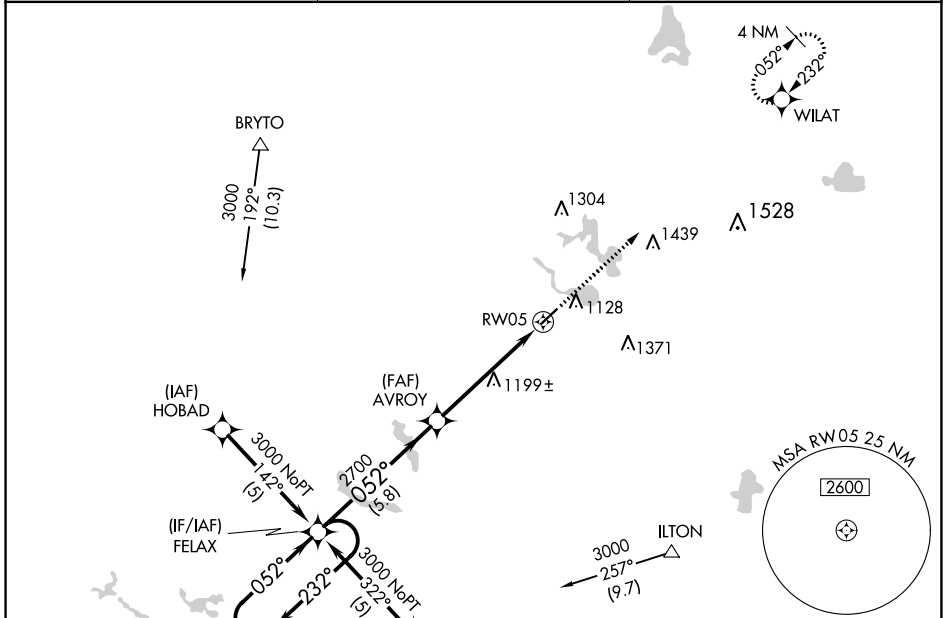
RNP APCH.

▼ For uncompensated Baro-VNAV systems, LNAV/VNAV NA below -16°C or above 54°C.

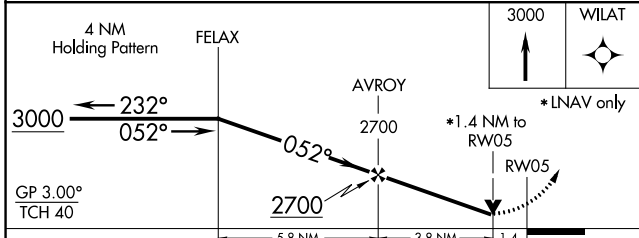
▲ NA Rwy 5 helicopter visibility reduction below 3/4 SM NA.

MISSED APPROACH:
Climb to 3000 direct
WILAT and hold.

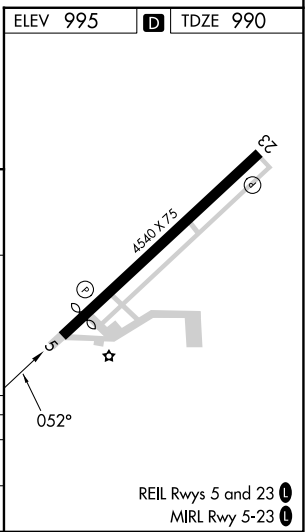
AWOS-3 118.175	FORT WAYNE APP CON 127.2 284.6 (SW/NW) 132.15 284.6 (SE/NE)	UNICOM 123.075 (CTAF) 1
--------------------------	---	--



ELEV 995	D TDZE 990
----------	-------------------



CATEGORY	A	B	C	D
LNAV/VNAV DA	1474-1 3/4		484 (500-1 3/4)	NA
LNAV MDA	1460-1	470 (500-1)	1460-1 1/2 470 (500-1 1/2)	NA



EC-2, 22 FEB 2024 to 21 MAR 2024

EC-2, 22 FEB 2024 to 21 MAR 2024