

MARYSVILLE, CALIFORNIA

# RNAV (GPS) RWY 15

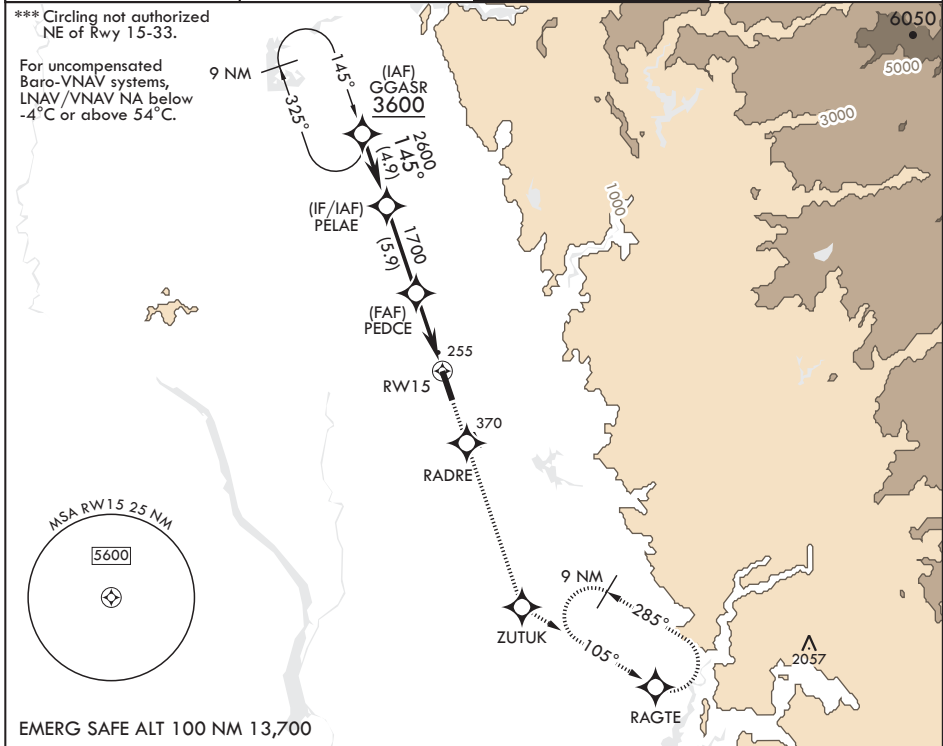
APCH CRS	Rwy Idg	12,001
145°	THRE	113
	Arprt Elev	113

-(USAF)

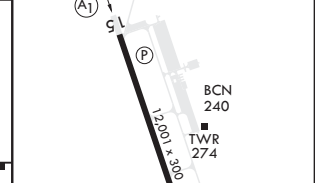
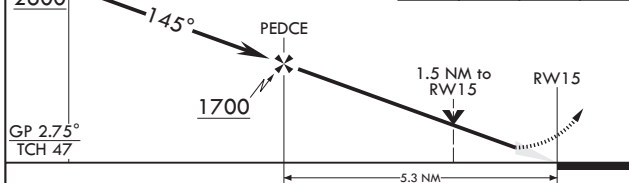
BEALE AFB (KBAB)

RNP APCH	ALSIF-1	MISSED APPROACH: Climb to 3600 direct RADRE, track 145° to ZUTUK, track 105° to RAGTE and hold, continue climb-in-hold to 3600.
<p>*** When ALS inop, increase RVR to 60, vis to 1 1/8 miles.                  ** When ALS inop, increase CAT AB RVR to 55 and vis to 1 mile;                  CAT CDE vis to 1 3/8 miles.</p>		

ATIS★	NORCAL APP CON	TOWER★	GND CON
124.55 273.5	125.4 259.1	119.4 284.75	121.6 257.75



PELAE	VGSI and RNAV glidepath not coincident (VGSI Angle 2.75/TCH 53).	3600	RADRE	tr 145°	ZUTUK	ELEV 113	THRE 113
-------	--	------	-------	---------	-------	----------	----------



CATEGORY	A	B	C	D	E
LNAV/VNAV DA*	530/40		417		(500-3/4)
LNAV MDA**	600/24 487 (500-1/2)		600/50		487 (500-1)
<b>C</b> CIRCLING***	600-1 487 (500-1)		600-1 1/2 487 (500-1 1/2)		800-2 1/4 687 (700-2 1/4) 800-2 1/2 687 (700-2 1/2)

HIRL all Rwys

MARYSVILLE, CALIFORNIA  
Amdt 2 25JAN24

39°08'N - 121°26'W

BEALE AFB (KBAB)

# RNAV (GPS) RWY 15

SW-2, 22 FEB 2024 to 21 MAR 2024

SW-2, 22 FEB 2024 to 21 MAR 2024