

WAAS CH <b>42713</b> <b>W02A</b>	APP CRS <b>021°</b>	Rwy Idg TDZE Apt Elev	<b>7702</b> <b>599</b> <b>599</b>
--	------------------------	-----------------------------	---

# RNAV (GPS) Y RWY 2L

NASHVILLE INTL (BNA)

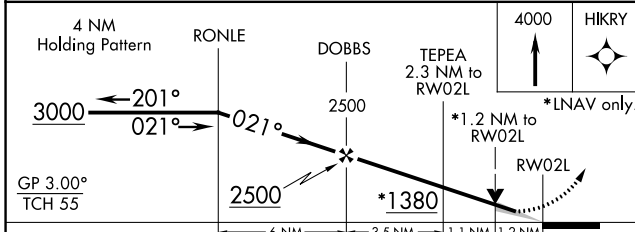
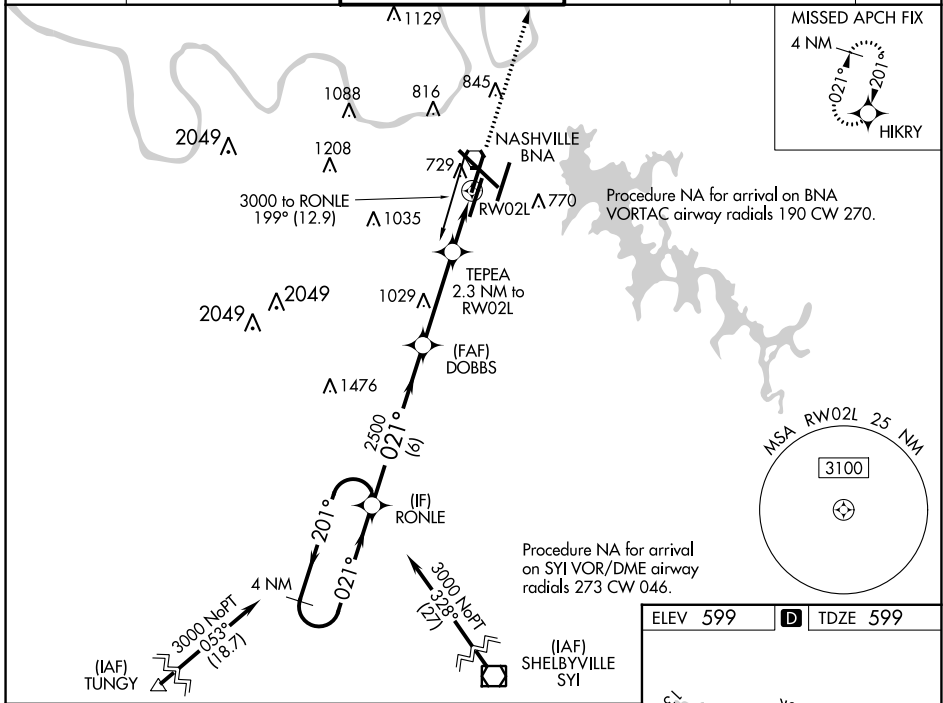
**▽** For uncompensated Baro-VNAV systems, LNAV/VNAV NA below -11°C (13°F) or above 54°C (130°F). Use of FD or AP providing RNAV track guidance required during simultaneous operations. LNAV procedure NA during simultaneous operations. Simultaneous approach authorized with Rwy 2R.  
**▲** DME/DME RNP-0.3 NA.

ALSF-2

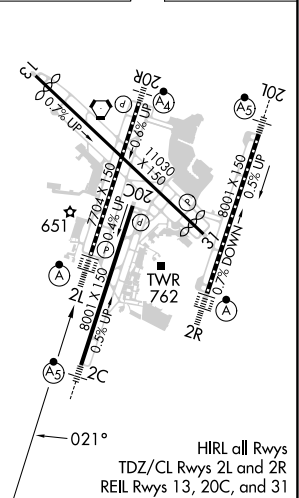


**MISSED APPROACH:**  
Climb to 4000 direct HIKRY and hold, continue climb-in-hold to 4000.

D-ATIS <b>135.1</b>	NASHVILLE APP CON <b>118.4 360.7</b>	NASHVILLE TOWER <b>118.6 257.8</b>	GND CON <b>121.9 348.6</b>	CLNC DEL <b>126.05</b>	CPDLC
------------------------	---	---------------------------------------	-------------------------------	---------------------------	-------



ELEV 599	<b>D</b> TDZE 599
----------	-------------------



CATEGORY	A	B	C	D
LPV DA		799/18	200 (200-½)	
LNAV/VNAV DA		949/30	350 (400-⅙)	
LNAV MDA	1020/24	421 (500-½)	1020/40	421 (500-¾)
<b>C</b> CIRCLING	1100-1 501 (600-1)	1120-1 521 (600-1)	1200-1¾ 601 (700-1¾)	1380-2½ 781 (800-2½)

SE-1, 22 FEB 2024 to 21 MAR 2024

SE-1, 22 FEB 2024 to 21 MAR 2024