

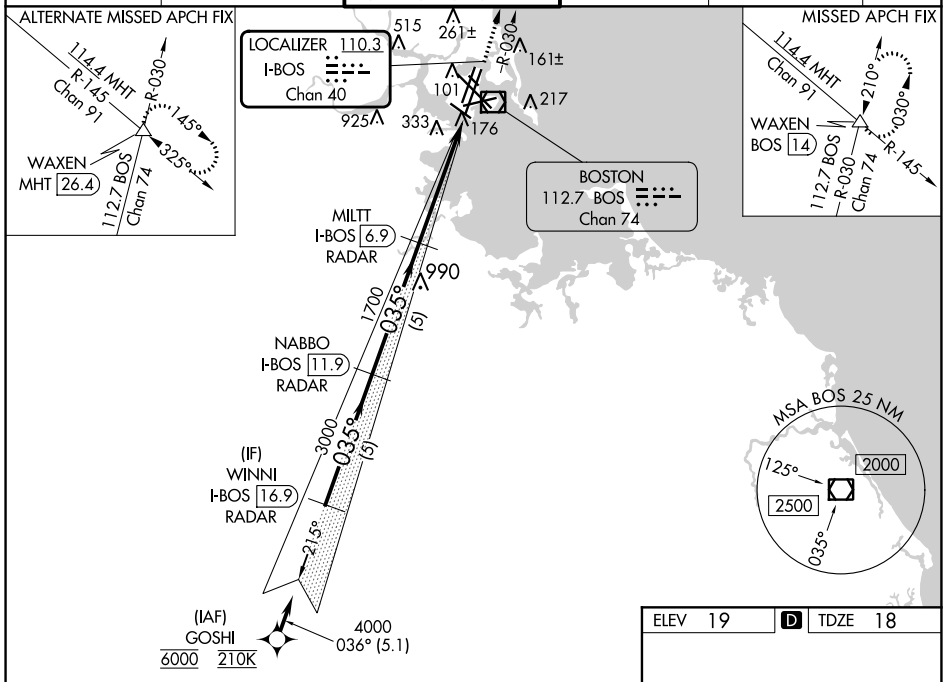
LOC/DME I-BOS <b>110.3</b> Chan 40	APP CRS <b>035°</b>	Rwy Idg <b>8851</b> TDZE <b>18</b> Apt Elev <b>19</b>
------------------------------------------	------------------------	-------------------------------------------------------------

# ILS RWY 4R (SA CAT I)

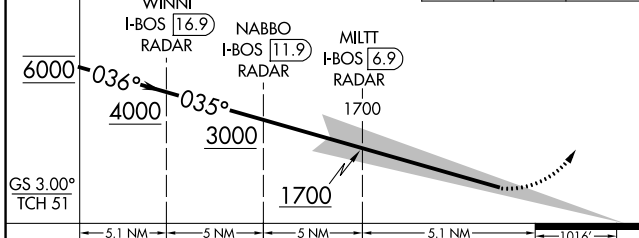
GENERAL EDWARD LAWRENCE LOGAN INTL (BOS)

RNAV 1-GPS or RADAR required for procedure entry. DME or RADAR required.		ALSF-2 	MISSED APPROACH: Climb to 3000 on BOS VOR/DME R-030 to WAXEN INT/BOS 14 DME and hold.
<p>▼ When control tower reports tall vessels in approach area, procedure NA. Requires specific OPSPEC, MSPEC, or LOA approval and use of HUD to DH. Simultaneous approach authorized. Simultaneous operations require use of vertical guidance; maintain last assigned altitude until established on glideslope.</p>			

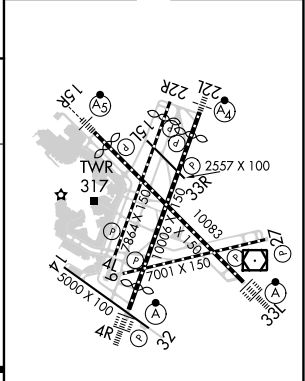
D-ATIS <b>135.0</b>	BOSTON APP CON <b>120.6 263.1</b>	BOSTON TOWER <b>128.8 257.8 (WEST)</b> <b>132.225 257.8 (EAST)</b>	GND CON <b>121.75 121.9</b>	CLNC DEL <b>121.65 257.8</b>	CPDLC
------------------------	--------------------------------------	--------------------------------------------------------------------------	--------------------------------	---------------------------------	-------



VGSI and ILS glidepath not coincident (VGSI Angle 3.00/TCH 67).	3000	WAXEN
	↑	△
	SOB	R-030



ELEV 19	D	TDZE 18
---------	---	---------



CATEGORY	A	B	C	D
S-ILS 4R	RA 168/14		150 DA 168	

## SA CATEGORY I ILS - SPECIAL AIRCREW & AIRCRAFT CERTIFICATION REQUIRED

TDZ/CL Rwy 4R, 15R and 33L  
REIL Rwy 4L, 27 and 32  
MIRL Rwy 15L-33R  
HIRL Rwy 4L-22R, 4R-22L, 9-27, 14-32 and 15R-33L

NE-1, 22 FEB 2024 to 21 MAR 2024

NE-1, 22 FEB 2024 to 21 MAR 2024