

(CONLE4.CONLE) 20366

AL-804 (FAA)

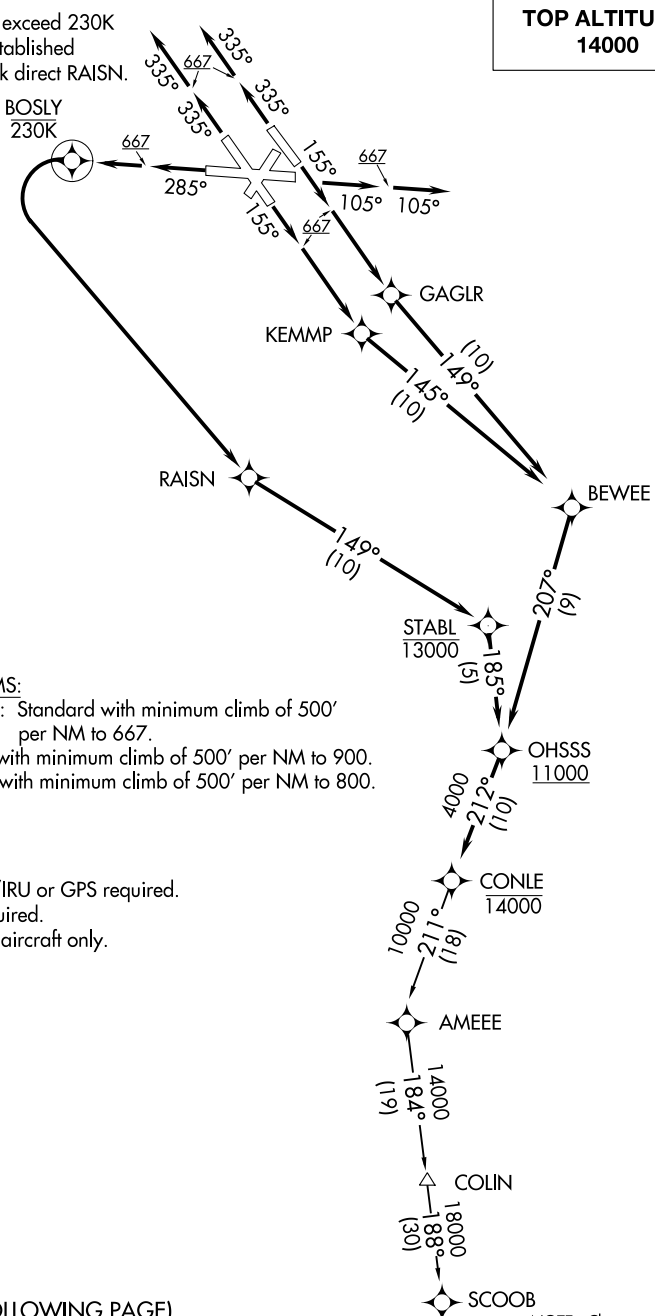
BALTIMORE/
WASHINGTON INTL THURGOOD MARSHALL (BWI)
BALTIMORE, MARYLAND

CONLE FOUR DEPARTURE (RNAV)

**TOP ALTITUDE:
14000**

D-ATIS
115.1 127.8
CLNC DEL
118.05
CPDLC
GND CON
121.9
BALTIMORE TOWER
119.4 257.8
POTOMAC DEP CON
124.55 317.425

Do not exceed 230K
until established
on track direct RAISN.



TAKEOFF MINIMUMS:

Rwys 10, 15L/R, 28: Standard with minimum climb of 500' per NM to 667.

Rwy 33L: Standard with minimum climb of 500' per NM to 900.

Rwy 33R: Standard with minimum climb of 500' per NM to 800.

NOTE: RNAV 1

NOTE: DME/DME/IRU or GPS required.

NOTE: RADAR required.

NOTE: For turbojet aircraft only.

(NARRATIVE ON FOLLOWING PAGE)

NOTE: Chart not to scale.

CONLE FOUR DEPARTURE (RNAV)
(CONLE4.CONLE) 31DEC20

BALTIMORE/
WASHINGTON INTL THURGOOD MARSHALL (BWI)
BALTIMORE, MARYLAND

NE-3, 22 FEB 2024 to 21 MAR 2024

NE-3, 22 FEB 2024 to 21 MAR 2024

CONLE FOUR DEPARTURE (RNAV)

DEPARTURE ROUTE DESCRIPTION

TAKEOFF RWY 10: Climb on heading 105° to 667, then on heading 105° or as assigned by ATC, for vectors to cross OHSSS at or above 11000....

TAKEOFF RWY 15L: Climb on heading 155° to 667, then direct GAGLR, then on track 149° to BEWEE, then on track 207° to cross OHSSS at or above 11000....

TAKEOFF RWY 15R: Climb on heading 155° to 667, then direct KEMMP, then on track 145° to BEWEE, then on track 207° to cross OHSSS at or above 11000....

TAKEOFF RWY 28: Climb on heading 285° to 667, then climb direct BOSLY, then left turn direct RAISN, then on track 149° to cross STABL at or below 13000, then on track 185° to cross OHSSS at or above 11000....

TAKEOFF RWYS 33L/R: Climb on heading 335° to 667, then on heading 335° or as assigned bt ATC, for vectors to cross OHSSS at or above 11000....

....then on track 212° to cross CONLE at or below 14000. Then on assigned transition. Maintain 14000. Expect clearance to filed altitude within 10 minutes after departure.

COLIN TRANSITION (CONLE4.COLIN)

SCOOB TRANSITION (CONLE4.SCOOB)

NE-3, 22 FEB 2024 to 21 MAR 2024

NE-3, 22 FEB 2024 to 21 MAR 2024