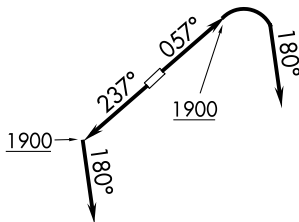


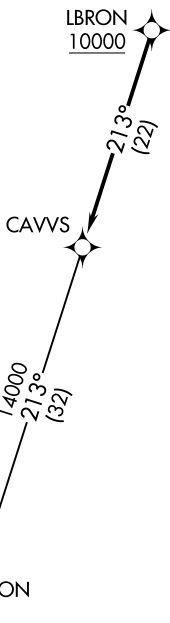
# CAVVS FOUR DEPARTURE (RNAV)

D-ATIS  
119.95  
CLNC DEL  
121.85 (when tower closed)  
GND CON  
121.85  
COUNTY TOWER ★  
118.5 (CTAF)  
CLEVELAND DEP CON  
125.35 346.325

**TOP ALTITUDE:  
ASSIGNED BY ATC**



EC-2, 22 FEB 2024 to 21 MAR 2024



NOTE: RADAR required.  
NOTE: RNAV 1.  
NOTE: DME/DME/IRU or GPS required.

**TAKEOFF MINIMUMS:**  
Rwys 6, 24: Standard with a minimum climb  
of 500' per NM to 1400.

EC-2, 22 FEB 2024 to 21 MAR 2024

## DEPARTURE ROUTE DESCRIPTION

**TAKEOFF RUNWAY 6:** Climb on heading 057° to 1900, then right turn heading 180° or as assigned by ATC for RADAR vectors to cross LBRON at or above 10000, thence....

**TAKEOFF RUNWAY 24:** Climb on heading 237° to 1900, then on heading 180° or as assigned by ATC for RADAR vectors to cross LBRON at or above 10000, thence....

....on track 213° to CAVVS, then on (transition).  
Maintain altitude assigned by ATC, expect filed altitude ten minutes after departure.

APPLETON TRANSITION (CAVVS4.APE)

NOTE: Chart not to scale.

# CAVVS FOUR DEPARTURE (RNAV)