

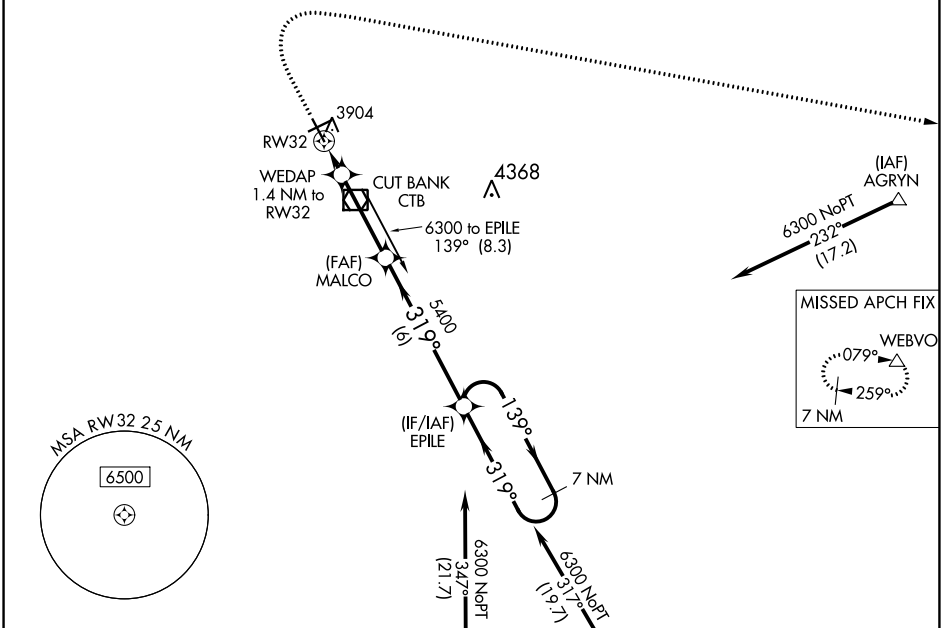
WAAS CH <b>99337</b> <b>W32A</b>	APP CRS <b>319°</b>	Rwy Idg TDZE Apt Elev	<b>5300</b> <b>3851</b> <b>3858</b>
--	------------------------	-----------------------------	---

# RNAV (GPS) RWY 32

CUT BANK INTL (CTB)

	For uncompensated Baro-VNAV systems, LNAV/VNAV NA below -25°C (-13°F) or above 51°C (124°F). DME/DME RNP-0.3 NA.	MISSED APPROACH: Climb to 4400 then climbing right turn to 11000 direct WEBVO and hold.
	-29°C	

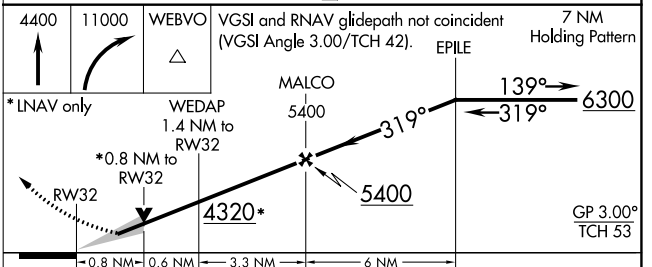
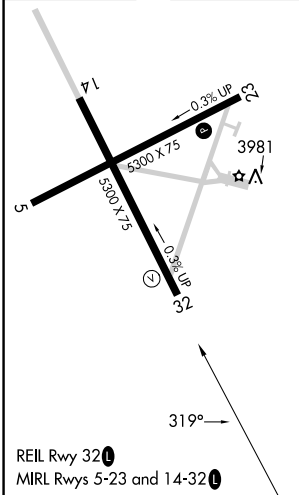
ASOS <b>119.025</b>	SALT LAKE CITY CENTER <b>133.4 285.4</b>	UNICOM <b>123.0 (CTAF) 0</b>
------------------------	---	---------------------------------



NW-1, 22 FEB 2024 to 21 MAR 2024

NW-1, 22 FEB 2024 to 21 MAR 2024

ELEV 3858	TDZE 3851
-----------	-----------



CATEGORY	A	B	C	D
LPV DA		4051-1	200 (200-1)	
LNAV/VNAV DA		4101-1	250 (300-1)	
LNAV MDA		4160-1	309 (400-1)	
<input checked="" type="checkbox"/> CIRCLING	4280-1 422 (500-1)	4320-1 462 (500-1)	4400-1½ 542 (600-1½)	4620-2½ 762 (800-2½)