

WAAS CH 78217 W31A	APP CRS 307°	Rwy Idg TDZE 1675 Apt Elev 1681	3700 1675 1681
--	------------------------	---	---

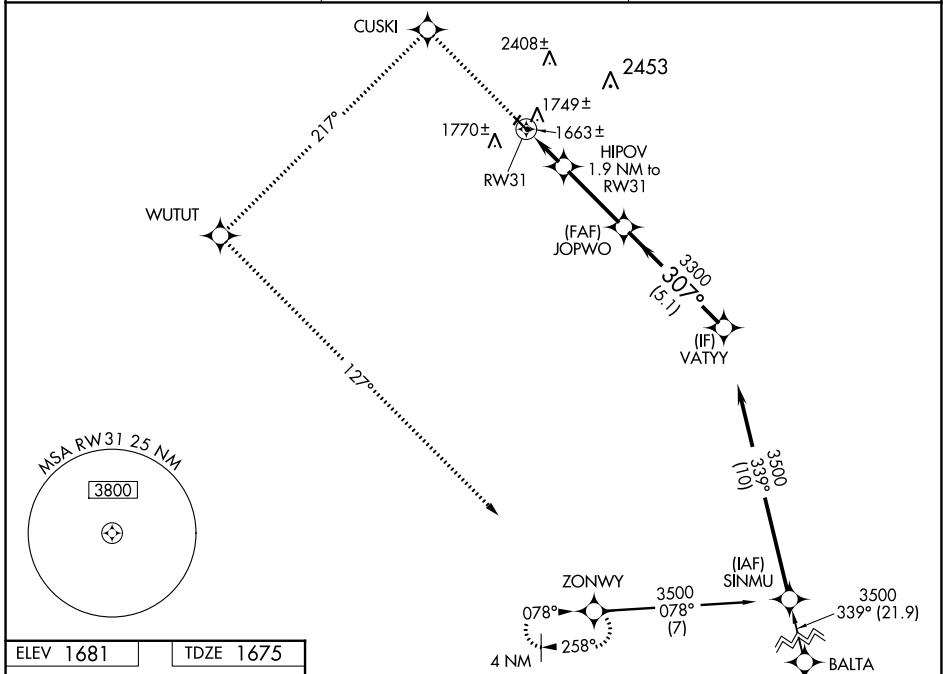
RNAV (GPS) RWY 31

BOTTINEAU MUNI (D09)

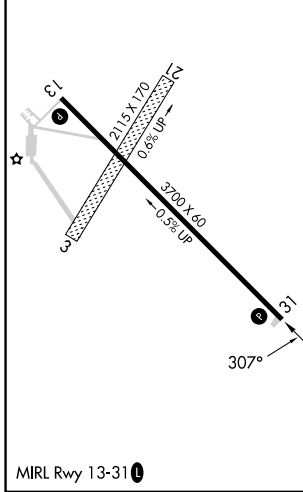
Baro-VNAV NA. DME/DME RNP-0.3 NA. Visibility reduction by helicopters NA. Use Minot Air Force Base altimeter setting, when not received; use Devils Lake altimeter setting and increase all DA/MDA 100 feet. Increase LPV, LNAV/VNAV Cats A/B and Circling Cat B visibility 1/4 mile.

MISSED APPROACH: Climb to 3900 direct CUSKI and left turn on track 217° to WUTUT and left turn on track 127° to ZONWY and hold.

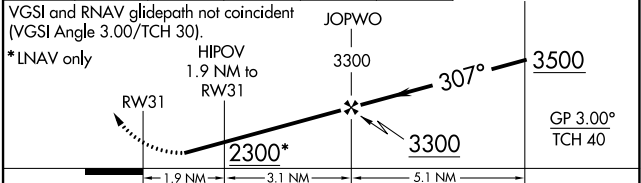
AWOS-3PT 118.25	MINOT APP CON * 119.6 363.8	UNICOM 122.8 (CTAF) 0
---------------------------	---------------------------------------	---------------------------------



ELEV 1681	TDZE 1675
-----------	-----------



3900	CUSKI	tr 217°	WUTUT	tr 127°	ZONWY	Procedure Turn NA
------	-------	---------	-------	---------	-------	-------------------



CATEGORY	A	B	C	D
LPV DA	2051-1½	376 (400-1½)		NA
LNAV/VNAV DA	2125-1¾	450 (500-1¾)		NA
LNAV MDA	2120-1	445 (500-1)		NA
CIRCLING	2360-1 679 (700-1)	2560-1¼ 879 (900-1¼)		NA

NC-1, 22 FEB 2024 to 21 MAR 2024

NC-1, 22 FEB 2024 to 21 MAR 2024