


|  |                        |  |
|--|------------------------|--|
| WAAS<br>CH <b>81830</b><br><b>W17A</b> | APP CRS<br><b>173°</b> | Rwy Idg <b>12000</b><br>TDZE <b>5339</b><br>Apt Elev <b>5434</b> |
|--|------------------------|--|

# RNAV (GPS) Y RWY 17L

DENVER INTL (DEN)

**▼** For uncompensated Baro-VNAV systems, LNAV/VNAV NA below -25°C (-13°F) or above 48°C (119°F). DME/DME RNP-0.3 NA. LNAV procedure NA during simultaneous operations. For inoperative MALS R increase LNAV Cats C/D visibility to RVR 5500. Use of FD or AP providing RNAV track guidance required during simultaneous operations. Simultaneous approach authorized with Rwy 16L/16R and 17R.  
# RVR 1800 authorized with use of FD or AP or HUD to DA.

**MALS R**

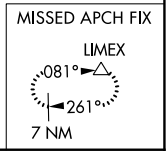
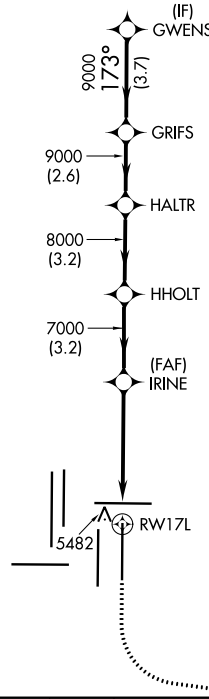
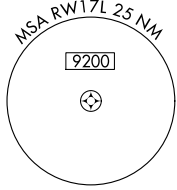


**MISSED APPROACH:**  
Climb to 5900 then climbing left turn to 10000 direct LIMEX and hold.

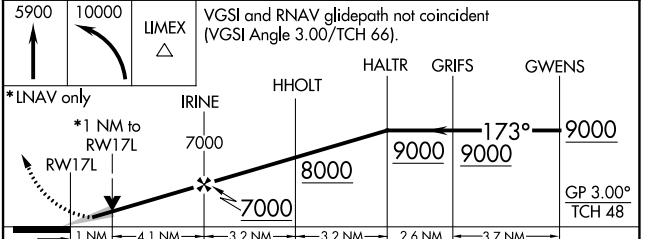
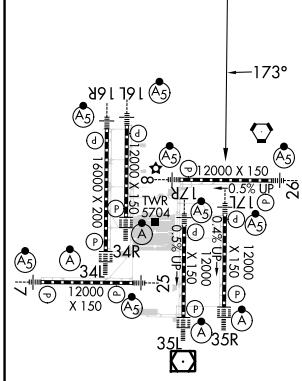
|  |  |                                       |                                |                           |       |
|--|--|---------------------------------------|--------------------------------|---------------------------|-------|
| D-ATIS<br>ARR <b>125.6 379.9</b><br>DEP <b>134.025</b> | DENVER APP CON<br><b>119.3 307.3 120.35 379.3</b><br>(NORTH) (SOUTH) | DENVER TOWER<br><b>132.35 239.275</b> | GND CON<br><b>121.85 377.1</b> | CLNC DEL<br><b>118.75</b> | CPDLC |
|--|--|---------------------------------------|--------------------------------|---------------------------|-------|

## RADAR REQUIRED

Λ 6260



|           |          |           |
|-----------|----------|-----------|
| ELEV 5434 | <b>D</b> | TDZE 5339 |
|-----------|----------|-----------|



|              |                       |   |                       |   |
|--------------|-----------------------|---|-----------------------|---|
| CATEGORY     | A                     | B | C                     | D |
| LPV DA#      | 5539/24 200 (200-1/2) |   |                       |   |
| LNAV/VNAV DA | 5648/24 309 (300-1/2) |   |                       |   |
| LNAV MDA     | 5700/24 361 (300-1/2) |   | 5700/35 361 (300-5/8) |   |

HIRL all Rwys  
TDZ/CL Rwys 7, 16L, 16R, 17R,  
26, 34L, 34R, 35L, 35R

SW-1, 22 FEB 2024 to 21 MAR 2024

SW-1, 22 FEB 2024 to 21 MAR 2024