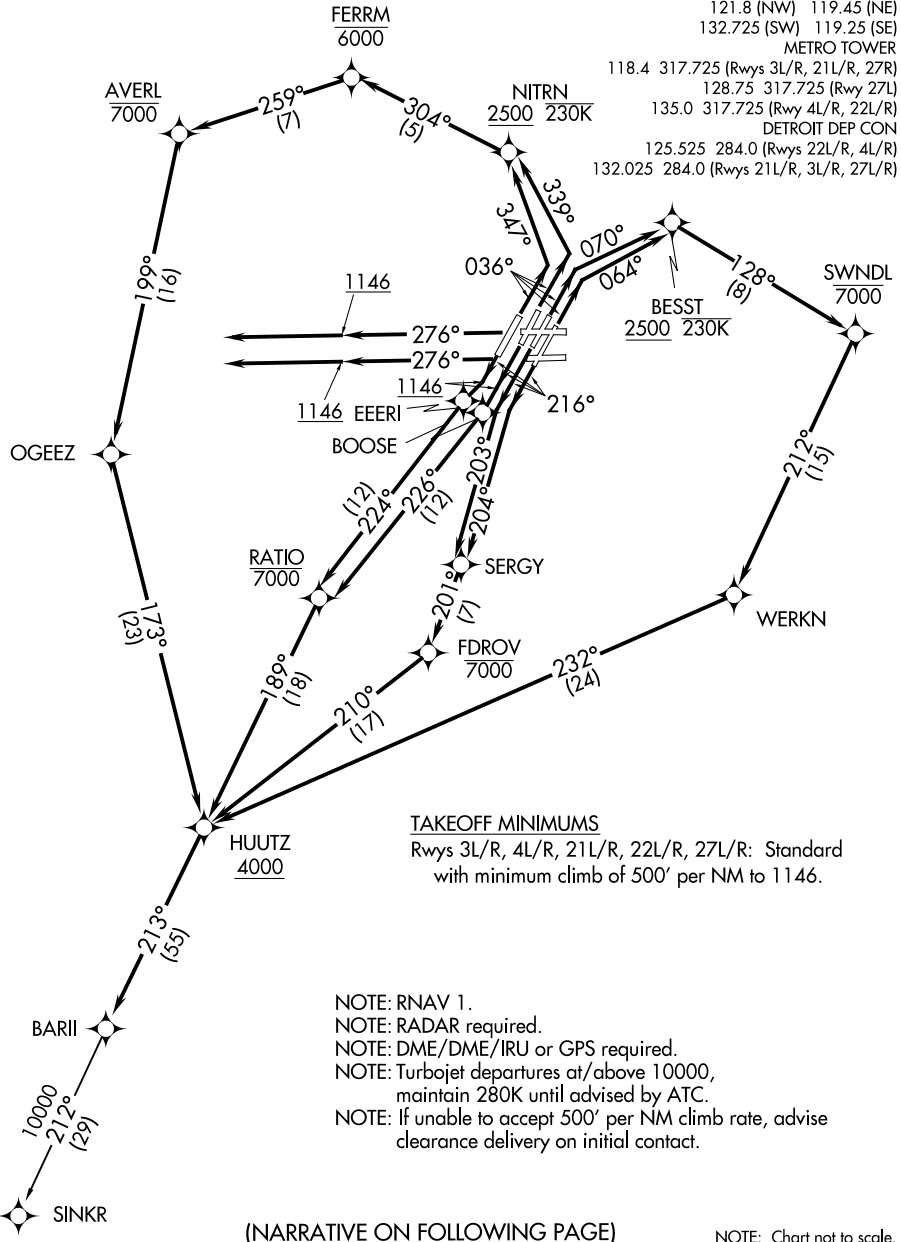


TOP ALTITUDE:
17000

D-ATIS 118.125
 CLNC DEL 120.65
 CPDLC
 GND CON
 121.8 (NW) 119.45 (NE)
 132.725 (SW) 119.25 (SE)
 METRO TOWER
 118.4 317.725 (Rwys 3L/R, 21L/R, 27R)
 128.75 317.725 (Rwy 27L)
 135.0 317.725 (Rwy 4L/R, 22L/R)
 DETROIT DEP CON
 125.525 284.0 (Rwys 22L/R, 4L/R)
 132.025 284.0 (Rwys 21L/R, 3L/R, 27L/R)



EC-1, 22 FEB 2024 to 21 MAR 2024

EC-1, 22 FEB 2024 to 21 MAR 2024

(NARRATIVE ON FOLLOWING PAGE)

NOTE: Chart not to scale.



DEPARTURE ROUTE DESCRIPTION

NOTE: See additional requirements in RNAV departure AAUP.

TAKEOFF RWY 3L: Climb on heading 036° to intercept course 070° to cross BESST at or above 2500 and at or below 230K, then on track 128° to cross SWNDL at or below 7000, then on track 212° to WERKN, then on track 232° to cross HUUTZ at or above 4000, thence....

TAKEOFF RWY 3R: Climb on heading 036° to intercept course 064° to cross BESST at or above 2500 and at or below 230K, then on track 128° to cross SWNDL at or below 7000, then on track 212° to WERKN, then on track 232° to cross HUUTZ at or above 4000, thence....

TAKEOFF RWY 4L: Climb on heading 036° to intercept course 347° to cross NITRN at or above 2500 and at or below 230K, then on track 304° to cross FERRM at or below 6000, then on track 259° to cross AVERL at or below 7000, then on track 199° to OGEEZ, then on track 173° to cross HUUTZ at or above 4000, thence....

TAKEOFF RWY 4R: Climb on heading 036° to intercept course 339° to cross NITRN at or above 2500 and at or below 230K, then on track 304° to cross FERRM at or below 6000, then on track 259° to cross AVERL at or below 7000, then on track 199° to OGEEZ, then on track 173° to cross HUUTZ at or above 4000, thence....

TAKEOFF RWY 21L: Climb on heading 216° to intercept course 204° to SERGY, then on track 201° to cross FDROV at or below 7000, then on track 210° to cross HUUTZ at or above 4000, thence....

TAKEOFF RWY 21R: Climb on heading 216° to intercept course 203° to SERGY, then on track 201° to cross FDROV at or below 7000, then on track 210° to cross HUUTZ at or above 4000, thence....

TAKEOFF RWY 22L: Climb on heading 216° to 1146, then direct BOOSE, then on track 226° to cross RATIO at or below 7000, then on track 189° to cross HUUTZ at or above 4000, thence....

TAKEOFF RWY 22R: Climb on heading 216° to 1146, then direct EEERI, then on track 224° to cross RATIO at or below 7000, then on track 189° to cross HUUTZ at or above 4000, thence....

TAKEOFF RWY 27L/R: Climb on heading 276° to 1146, then on heading 276° or as assigned for RADAR vectors to cross HUUTZ at or above 4000, thence....

....on track 213° to BARII, then on (transition). Maintain 17000 or as assigned by ATC, expect filed altitude 10 minutes after departure.

SINKR TRANSITION (BARI2.SINKR):

EC-1, 22 FEB 2024 to 21 MAR 2024

EC-1, 22 FEB 2024 to 21 MAR 2024