

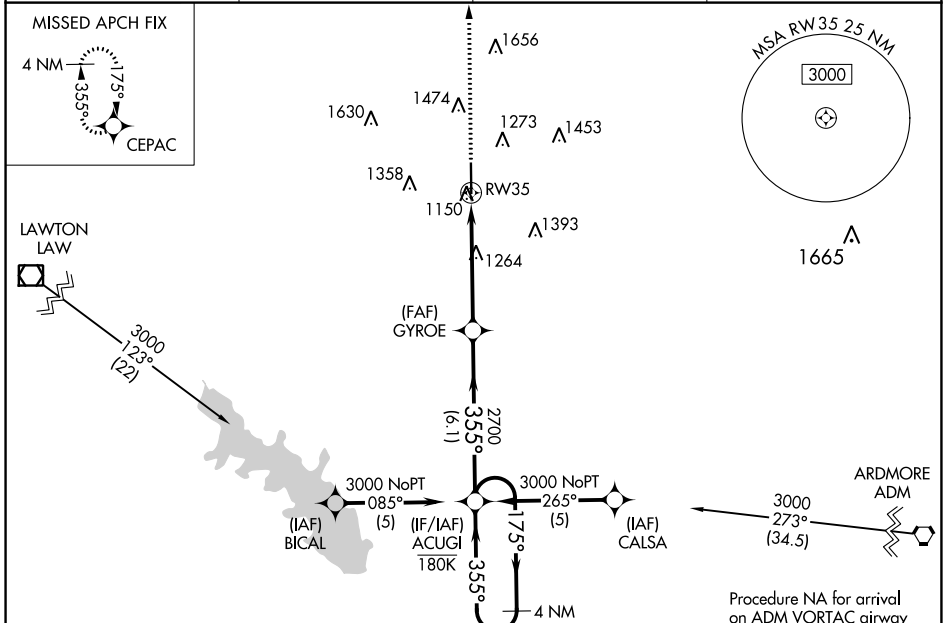
WAAS CH <b>40241</b> <b>W35A</b>	APP CRS <b>355°</b>	Rwy Idg TDZE Apt Elev	<b>6325</b> <b>1094</b> <b>1114</b>
--	------------------------	-----------------------------	---

# RNAV (GPS) RWY 35

HALLIBURTON FLD (DUC)

RNP APCH. ▼ For uncompensated Baro-VNAV systems, LNAV/VNAV NA below -17°C or above 54°C.	MISSED APPROACH: Climb to 3000 direct CEPAC and hold.
---	---

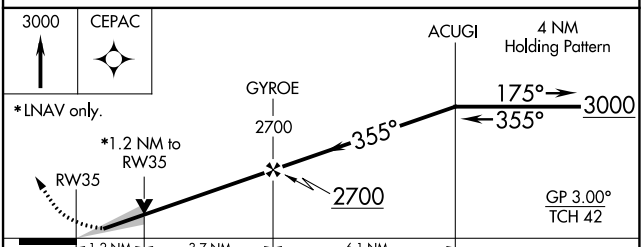
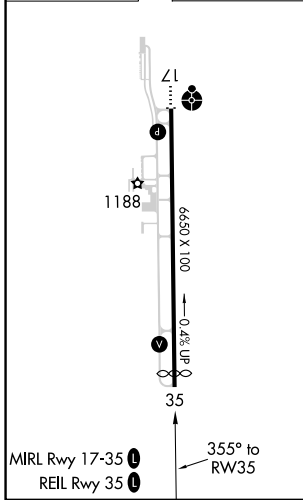
AWOS-3 <b>119.075</b>	FORT SILL APP CON <b>118.6 290.375</b>	CLNC DEL <b>118.4</b>	UNICOM <b>122.8 (CTAF)</b>
--------------------------	---	--------------------------	-------------------------------



SC-1, 22 FEB 2024 to 21 MAR 2024

SC-1, 22 FEB 2024 to 21 MAR 2024

ELEV 1114	<b>D</b>	TDZE 1094
-----------	----------	-----------



CATEGORY	A	B	C	D
LPV DA		1294-3/4	200 (200-3/4)	
LNAV/VNAV DA		1397-7/8	303 (300-7/8)	
LNAV MDA	1520-1	426 (500-1)	1520-1 1/4	426 (500-1 1/4)
<b>CIRCLING</b>	1560-1 446 (500-1)	1580-1 466 (500-1)	1780-1 3/4 666 (700-1 3/4)	1780-2 666 (700-2)