

WAAS CH 70701 W32A	APP CRS 318°	Rwy Idg 5000 TDZE 73 Apt Elev 75
--	------------------------	---

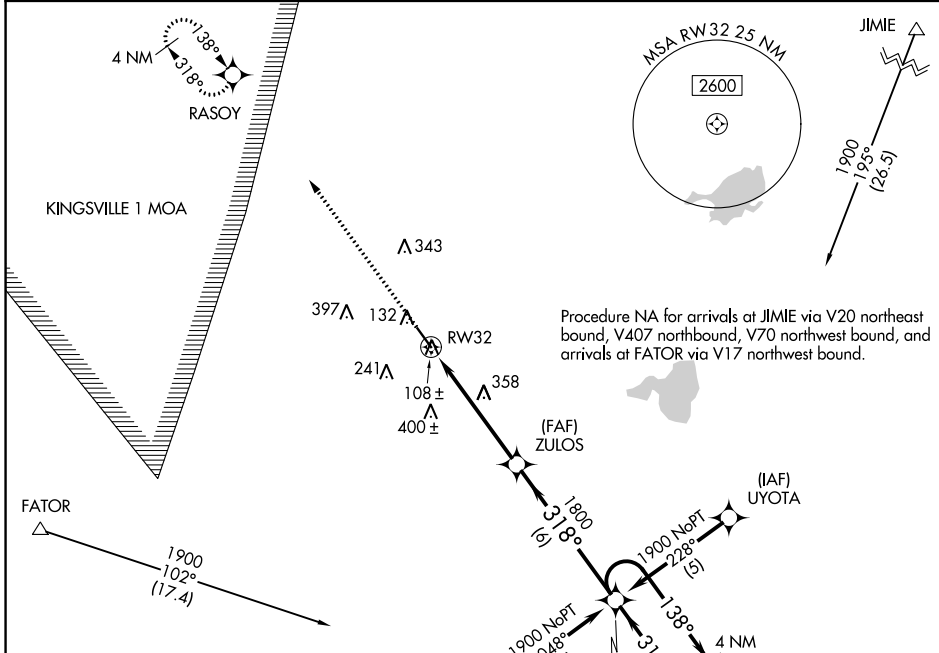
RNAV (GPS) RWY 32

SOUTH TEXAS INTL AT EDINBURG (E.BG)

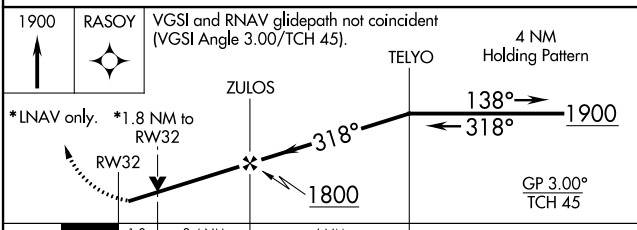
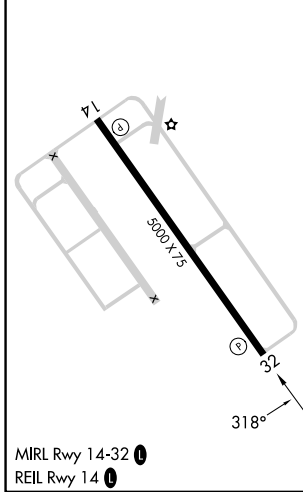
RNP APCH-GPS.
 Rwy 32 helicopter visibility reduction below 3/4 SM NA.
 For uncompensated Baro-VNAV systems LNAV/VNAV NA below -15°C or above 48°C.

MISSED APPROACH: Climb to 1900 direct RASOY and hold.

AWOS-3PT 118.025	VALLEY APP CON 126.55 377.2	UNICOM 122.8 (CTAF) 0
----------------------------	---------------------------------------	---------------------------------



ELEV 75	TDZE 73
---------	---------



CATEGORY	A	B	C	D
LPV DA	323-3/4 250 (300-3/4)			
LNAV/VNAV DA	361-1 288 (300-1)			
LNAV MDA	660-1	587 (600-1)	660-1 1/2 587 (600-1 1/2)	660-1 3/4 587 (600-1 3/4)
CIRCLING	660-1	585 (600-1)	760-2 685 (700-2)	760-2 1/4 685 (700-2 1/4)

SC-3, 22 FEB 2024 to 21 MAR 2024

SC-3, 22 FEB 2024 to 21 MAR 2024