

WAAS CH 63002 W22A	APP CRS 219°	Rwy Idg TDZE Apt Elev	6153 17 18
----------------------------------------	------------------------	-----------------------------	---------------------------------------

RNAV (GPS) RWY 22

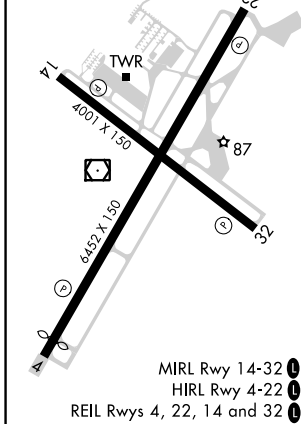
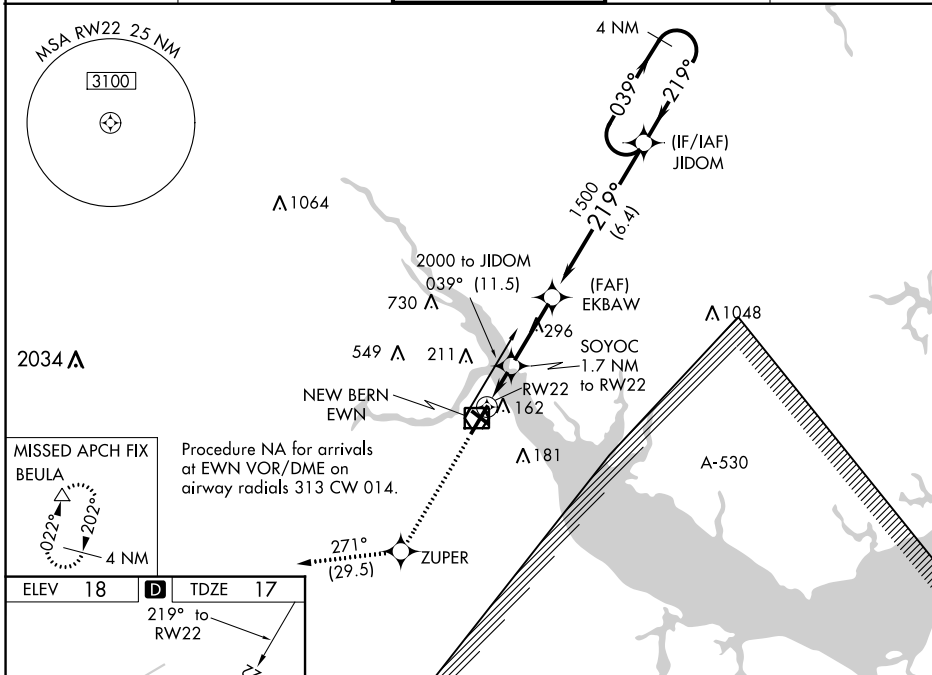
COASTAL CAROLINA RGNL (EWN)

RNP APCH.

⚠ Rwy 14, 32 helicopter visibility reduction below 1 SM NA. Rwy 22 helicopter visibility reduction below 3/4 SM NA. Circling Rwy 14, 32 NA at night. Baro-VNAV NA when using Cherry Point altimeter setting. For uncompensated Baro-VNAV systems, LNAV/VNAV NA below -15°C (5°F) or above 54°C (130°F). When local altimeter setting not received, use Cherry Point altimeter setting; increase all DA 32 feet and all MDA 40 feet. Increase LPV and LNAV/VNAV visibility 1/2 SM, and Circling Cat C/D visibility 1/2 SM.

MISSED APPROACH: Climb to 3000 direct ZUPER and on track 271° to BEULA and hold.

ASOS 118.525	CHERRY POINT APP CON 119.35 374.9	NEW BERN TOWER★ 124.25 (CTAF) 0	CLNC DEL 121.7	GND CON 121.7
------------------------	---------------------------------------------	-------------------------------------------	--------------------------	-------------------------



ELEV 18	D	TDZE 17				
3000	ZUPER	tr	BEULA	4 NM Holding Pattern		
271°						
*LNAV only. SOYOC 1.7 NM to RW22. EKBAW 1500. JIDOM 039° to 2000. RW22 1500. GP 3.00° TCH 31.						
1.7 NM 2.9 NM 6.4 NM						
CATEGORY	A	B	C	D		
LPV DA	269-7/8		252 (300-7/8)			
LNAV/VNAV DA	376-1 1/4		359 (400-1 1/4)			
LNAV MDA	480-1 463 (500-1)		480-1 3/8		463 (500-1 3/8)	
C CIRCLING	480-1 462 (500-1)	520-1 502 (600-1)	600-1 1/2 582 (600-1 1/2)		860-2 3/4 842 (900-2 3/4)	

SE-2, 22 FEB 2024 to 21 MAR 2024

SE-2, 22 FEB 2024 to 21 MAR 2024