

NDB PQF 248	APP CRS 027°	Rwy Idg TDZE Apt Elev	N/A N/A 574
-----------------------	------------------------	-----------------------------	--

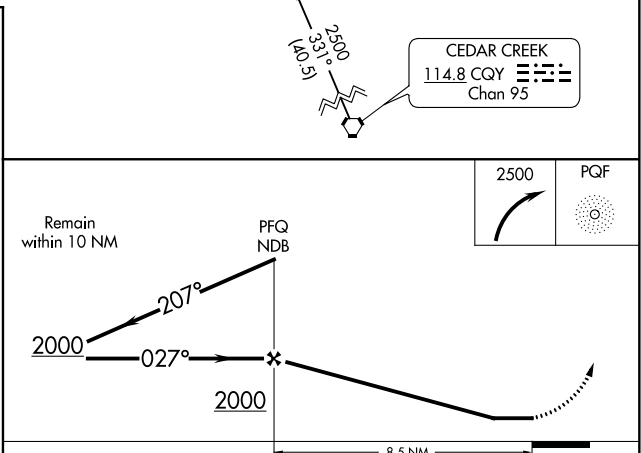
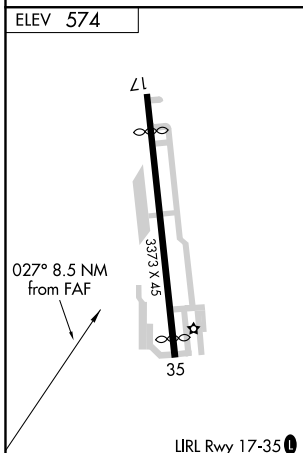
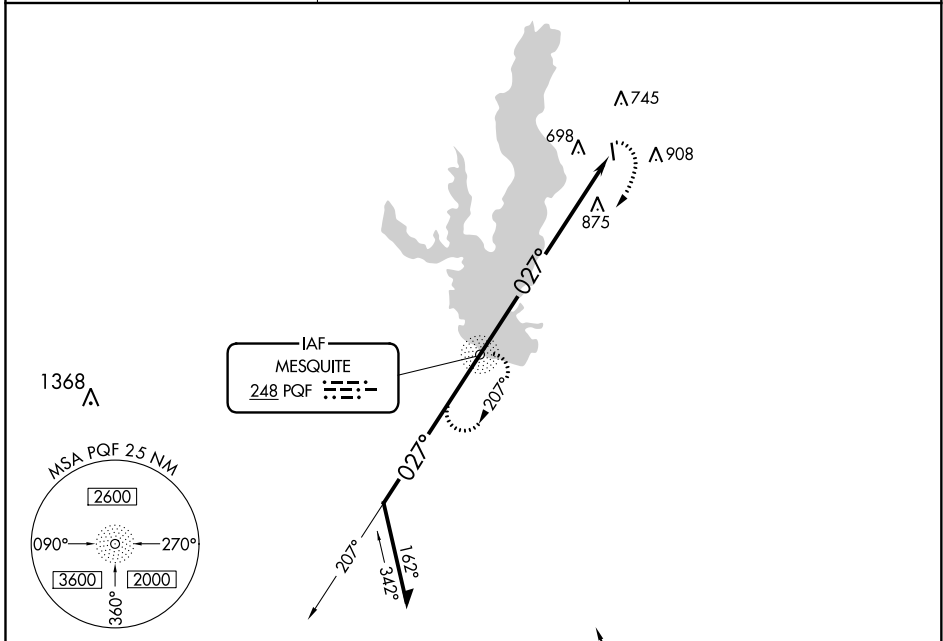
NDB-A

RALPH M HALL/ROCKWALL MUNI (F46)

⚠ When local altimeter setting not received, use Dallas Love Field altimeter setting and increase all MDA 80 feet. Procedure NA at night.
⚠ Helicopter visibility reduction below 1 SM NA.

MISSED APPROACH: Climbing right turn to 2500 direct PQF NDB and hold.

AWOS-3 121.25	REGIONAL APP CON 124.3 282.275	UNICOM 122.8 (CTAF) 📞
-------------------------	--	--



FAF to MAP 8.5 NM						
Knots	60	90	120	150	180	
Min:Sec	8:30	5:40	4:15	3:24	2:50	
CATEGORY	A		B		C	D
CIRCLING	1400-1¼		826 (900-1¼)		NA	

NDB-A

SC-2, 25 FEB 2021 to 25 MAR 2021

SC-2, 25 FEB 2021 to 25 MAR 2021

APP CRS 167°	Rwy Idg	2901
	TDZE	574
	Apt Elev	574

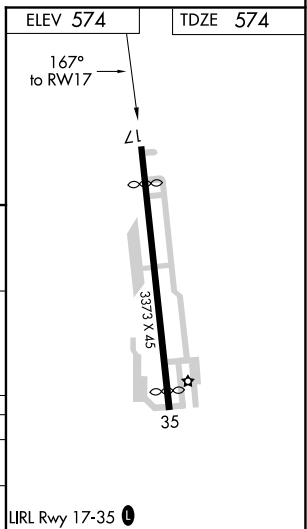
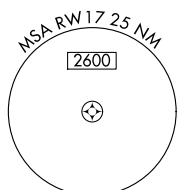
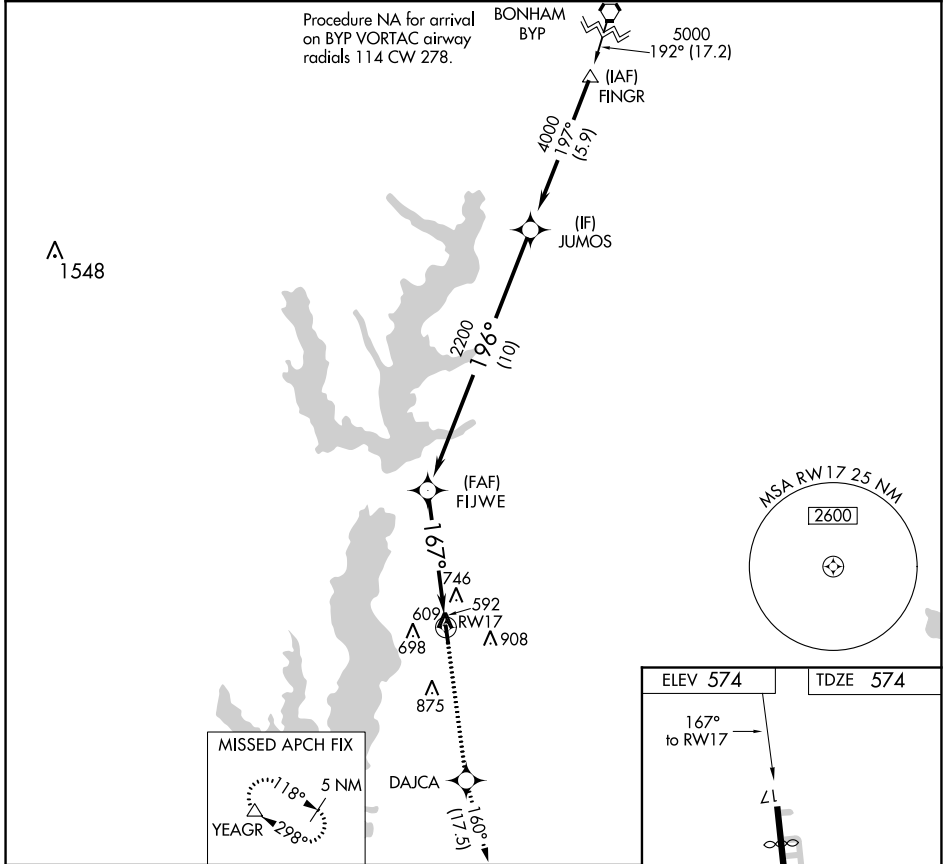
RNAV (GPS) RWY 17

RALPH M HALL/ROCKWALL MUNI (F46)

⚠ DME/DME RNP-0.3 NA. When local altimeter setting not received, use Dallas Love Field altimeter setting and increase all MDA 80 feet. Helicopter visibility reduction below 1 SM NA. Procedure NA at night.

MISSED APPROACH: Climb to 5000 direct DAJCA and on track 160° to YEAGR and hold.

AWOS-3 121.25	REGIONAL APP CON 124.3 282.275	UNICOM 122.8 (CTAF) 0
-------------------------	--	---------------------------------



JUMOS	5000	DAJCA	tr 160°	YEAGR
4000	↑	✧		△
	FIJWE	3.00°	TCH 40 RW17	
	2200	✧	167°	
10 NM		5 NM		
CATEGORY	A	B	C	D
LNAV MDA	1140-1	566 (600-1)	NA	
CIRCLING	1280-1	706 (800-1)	NA	

SC-2, 25 FEB 2021 to 25 MAR 2021

SC-2, 25 FEB 2021 to 25 MAR 2021

APP CRS 347°	Rwy Idg 3084
	TDZE 574
	Apt Elev 574

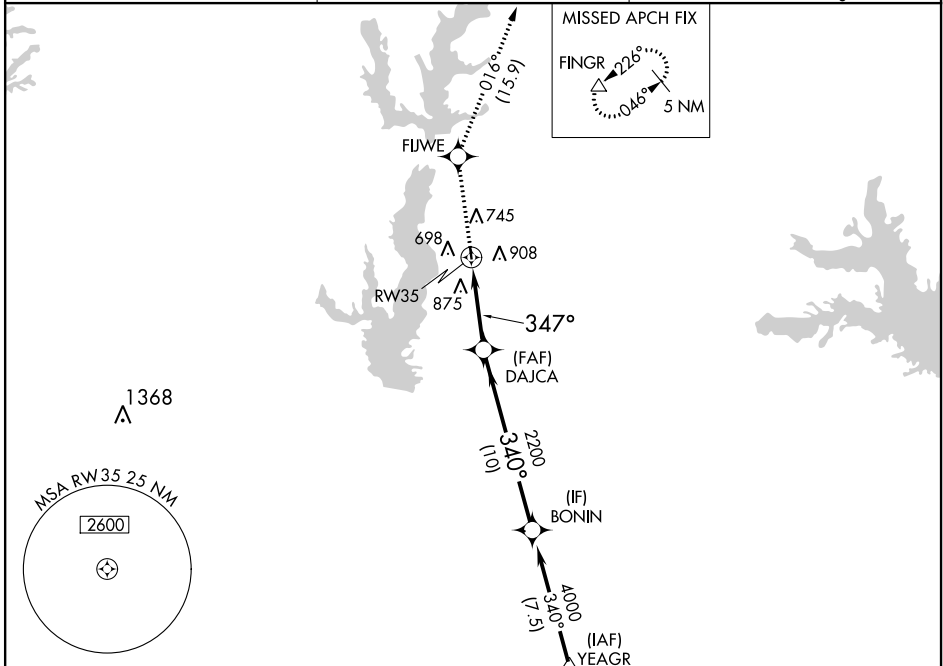
RNAV (GPS) RWY 35

RALPH M HALL/ROCKWALL MUNI (F46)

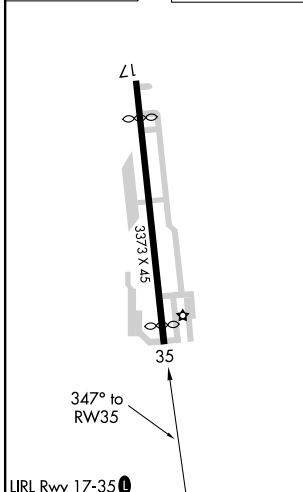
⚠ DME/DME RNP-0.3 NA. When local altimeter setting not received, use Dallas Love Field altimeter setting and increase all MDA 80 feet.
⚠ Helicopter visibility reduction below 1 SM NA. Procedure NA at night.

MISSED APPROACH: Climb to 5000 direct FIJWE and on track 016° to FINGR and hold.

AWOS-3 121.25	REGIONAL APP CON 124.3 282.275	UNICOM 122.8 (CTAF) 0
-------------------------	--	---------------------------------

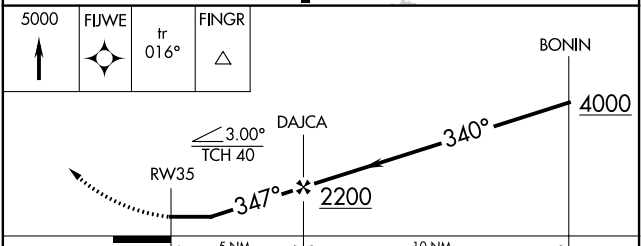


ELEV 574	TDZE 574
----------	----------



Procedure NA for arrival on CQY VORTAC airway radials 263 CW 040.

CEDAR CREEK CQY



CATEGORY	A	B	C	D
LNAV MDA	1200-1	626 (700-1)	NA	
CIRCLING	1280-1	706 (800-1)	NA	

SC-2, 25 FEB 2021 to 25 MAR 2021

SC-2, 25 FEB 2021 to 25 MAR 2021