

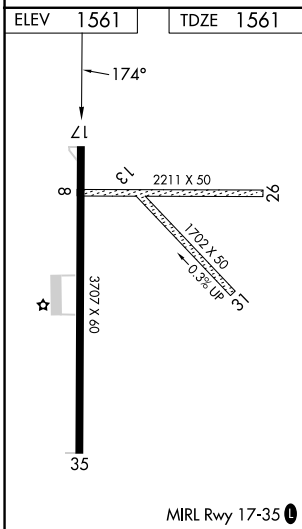
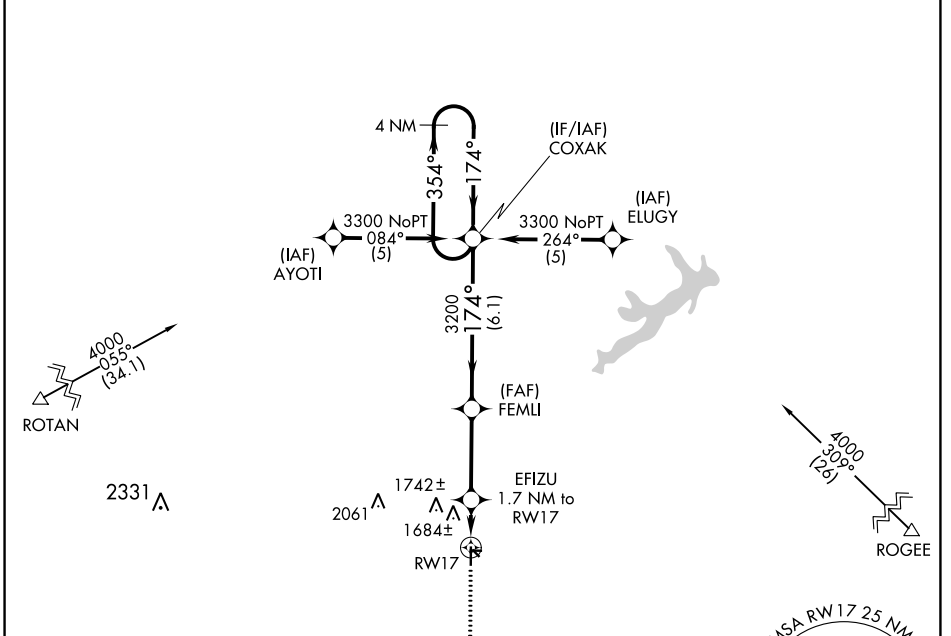
APP CRS	Rwy ldg	3707
174°	TDZE	1561
	Apt Elev	1561

RNAV (GPS) RWY 17

ARLEDGE FLD (F56)

RNP APCH-GPS.	MISSED APPROACH: Climb to 3300 direct HINTA and hold.
<p>Procedure NA at night. Use Abilene Rgnl altimeter setting; when not received use Breckenridge altimeter setting and increase all MDAs 40 feet.</p> <p>Rwy 17 helicopter visibility reduction below 1 SM NA.</p>	

ABILENE APP CON 127.2 282.3	UNICOM 122.8 (CTAF) 0
---------------------------------------	---------------------------------



3300	HINTA	FEMLI	COXAK	4 NM Holding Pattern
↑	✧			
EFIZU 1.7 NM to RW17	3200	3200	3300	
3200	2120	3200	3300	
1.7 NM	3.3 NM	6.1 NM		
3300	HINTA	COXAK	4 NM Holding Pattern	
↑	✧			
EFIZU 1.7 NM to RW17	3200	3200	3300	
3200	2120	3200	3300	
1.7 NM	3.3 NM	6.1 NM		
3300	HINTA	COXAK	4 NM Holding Pattern	
↑	✧			
EFIZU 1.7 NM to RW17	3200	3200	3300	
3200	2120	3200	3300	
1.7 NM	3.3 NM	6.1 NM		
3300	HINTA	COXAK	4 NM Holding Pattern	
↑	✧			
EFIZU 1.7 NM to RW17	3200	3200	3300	
3200	2120	3200	3300	
1.7 NM	3.3 NM	6.1 NM		
3300	HINTA	COXAK	4 NM Holding Pattern	
↑	✧			
EFIZU 1.7 NM to RW17	3200	3200	3300	
3200	2120	3200	3300	
1.7 NM	3.3 NM	6.1 NM		
3300	HINTA	COXAK	4 NM Holding Pattern	
↑	✧			
EFIZU 1.7 NM to RW17	3200	3200	3300	
3200	2120	3200	3300	
1.7 NM	3.3 NM	6.1 NM		
3300	HINTA	COXAK	4 NM Holding Pattern	
↑	✧			
EFIZU 1.7 NM to RW17	3200	3200	3300	
3200	2120	3200	3300	
1.7 NM	3.3 NM	6.1 NM		
3300	HINTA	COXAK	4 NM Holding Pattern	
↑	✧			
EFIZU 1.7 NM to RW17	3200	3200	3300	
3200	2120	3200	3300	
1.7 NM	3.3 NM	6.1 NM		
3300	HINTA	COXAK	4 NM Holding Pattern	
↑	✧			
EFIZU 1.7 NM to RW17	3200	3200	3300	
3200	2120	3200	3300	
1.7 NM	3.3 NM	6.1 NM		
3300	HINTA	COXAK	4 NM Holding Pattern	
↑	✧			
EFIZU 1.7 NM to RW17	3200	3200	3300	
3200	2120	3200	3300	
1.7 NM	3.3 NM	6.1 NM		
3300	HINTA	COXAK	4 NM Holding Pattern	
↑	✧			
EFIZU 1.7 NM to RW17	3200	3200	3300	
3200	2120	3200	3300	
1.7 NM	3.3 NM	6.1 NM		
3300	HINTA	COXAK	4 NM Holding Pattern	
↑	✧			
EFIZU 1.7 NM to RW17	3200	3200	3300	
3200	2120	3200	3300	
1.7 NM	3.3 NM	6.1 NM		
3300	HINTA	COXAK	4 NM Holding Pattern	
↑	✧			
EFIZU 1.7 NM to RW17	3200	3200	3300	
3200	2120	3200	3300	
1.7 NM	3.3 NM	6.1 NM		
3300	HINTA	COXAK	4 NM Holding Pattern	
↑	✧			
EFIZU 1.7 NM to RW17	3200	3200	3300	
3200	2120	3200	3300	
1.7 NM	3.3 NM	6.1 NM		
3300	HINTA	COXAK	4 NM Holding Pattern	
↑	✧			
EFIZU 1.7 NM to RW17	3200	3200	3300	
3200	2120	3200	3300	
1.7 NM	3.3 NM	6.1 NM		
3300	HINTA	COXAK	4 NM Holding Pattern	
↑	✧			
EFIZU 1.7 NM to RW17	3200	3200	3300	
3200	2120	3200	3300	
1.7 NM	3.3 NM	6.1 NM		
3300	HINTA	COXAK	4 NM Holding Pattern	
↑	✧			
EFIZU 1.7 NM to RW17	3200	3200	3300	
3200	2120	3200	3300	
1.7 NM	3.3 NM	6.1 NM		
3300	HINTA	COXAK	4 NM Holding Pattern	
↑	✧			
EFIZU 1.7 NM to RW17	3200	3200	3300	
3200	2120	3200	3300	
1.7 NM	3.3 NM	6.1 NM		
3300	HINTA	COXAK	4 NM Holding Pattern	
↑	✧			
EFIZU 1.7 NM to RW17	3200	3200	3300	
3200	2120	3200	3300	
1.7 NM	3.3 NM	6.1 NM		
3300	HINTA	COXAK	4 NM Holding Pattern	
↑	✧			
EFIZU 1.7 NM to RW17	3200	3200	3300	
3200	2120	3200	3300	
1.7 NM	3.3 NM	6.1 NM		
3300	HINTA	COXAK	4 NM Holding Pattern	
↑	✧			
EFIZU 1.7 NM to RW17	3200	3200	3300	
3200	2120	3200	3300	
1.7 NM	3.3 NM	6.1 NM		
3300	HINTA	COXAK	4 NM Holding Pattern	
↑	✧			
EFIZU 1.7 NM to RW17	3200	3200	3300	
3200	2120	3200	3300	
1.7 NM	3.3 NM	6.1 NM		
3300	HINTA	COXAK	4 NM Holding Pattern	
↑	✧			
EFIZU 1.7 NM to RW17	3200	3200	3300	
3200	2120	3200	3300	
1.7 NM	3.3 NM	6.1 NM		
3300	HINTA	COXAK	4 NM Holding Pattern	
↑	✧			
EFIZU 1.7 NM to RW17	3200	3200	3300	
3200	2120	3200	3300	
1.7 NM	3.3 NM	6.1 NM		
3300	HINTA	COXAK	4 NM Holding Pattern	
↑	✧			
EFIZU 1.7 NM to RW17	3200	3200	3300	
3200	2120	3200	3300	
1.7 NM	3.3 NM	6.1 NM		
3300	HINTA	COXAK	4 NM Holding Pattern	
↑	✧			
EFIZU 1.7 NM to RW17	3200	3200	3300	
3200	2120	3200	3300	
1.7 NM	3.3 NM	6.1 NM		
3300	HINTA	COXAK	4 NM Holding Pattern	
↑	✧			
EFIZU 1.7 NM to RW17	3200	3200	3300	
3200	2120	3200	3300	
1.7 NM	3.3 NM	6.1 NM		
3300	HINTA	COXAK	4 NM Holding Pattern	
↑	✧			
EFIZU 1.7 NM to RW17	3200	3200	3300	
3200	2120	3200	3300	
1.7 NM	3.3 NM	6.1 NM		
3300	HINTA	COXAK	4 NM Holding Pattern	
↑	✧			
EFIZU 1.7 NM to RW17	3200	3200	3300	
3200	2120	3200	3300	
1.7 NM	3.3 NM	6.1 NM		
3300	HINTA	COXAK	4 NM Holding Pattern	
↑	✧			
EFIZU 1.7 NM to RW17	3200	3200	3300	
3200	2120	3200	3300	
1.7 NM	3.3 NM	6.1 NM		
3300	HINTA	COXAK	4 NM Holding Pattern	
↑	✧			
EFIZU 1.7 NM to RW17	3200	3200	3300	
3200	2120	3200	3300	
1.7 NM	3.3 NM	6.1 NM		
3300	HINTA	COXAK	4 NM Holding Pattern	
↑	✧			
EFIZU 1.7 NM to RW17	3200	3200	3300	
3200	2120	3200	3300	
1.7 NM	3.3 NM	6.1 NM		
3300	HINTA	COXAK	4 NM Holding Pattern	
↑	✧			
EFIZU 1.7 NM to RW17	3200	3200	3300	
3200	2120	3200	3300	
1.7 NM	3.3 NM	6.1 NM		
3300	HINTA	COXAK	4 NM Holding Pattern	
↑	✧			
EFIZU 1.7 NM to RW17	3200	3200	3300	
3200	2120	3200	3300	
1.7 NM	3.3 NM	6.1 NM		
3300	HINTA	COXAK	4 NM Holding Pattern	
↑	✧			
EFIZU 1.7 NM to RW17	3200	3200	3300	
3200	2120	3200	3300	
1.7 NM	3.3 NM	6.1 NM		
3300	HINTA	COXAK	4 NM Holding Pattern	
↑	✧			
EFIZU 1.7 NM to RW17	3200	3200	3300	
3200	2120	3200	3300	
1.7 NM	3.3 NM	6.1 NM		
3300	HINTA	COXAK	4 NM Holding Pattern	
↑	✧			
EFIZU 1.7 NM to RW17	3200	3200	3300	
3200	2120	3200	3300	
1.7 NM	3.3 NM	6.1 NM		
3300	HINTA	COXAK	4 NM Holding Pattern	
↑	✧			
EFIZU 1.7 NM to RW17	3200	3200	3300	
3200	2120	3200	3300	
1.7 NM	3.3 NM	6.1 NM		
3300	HINTA	COXAK	4 NM Holding Pattern	
↑	✧			
EFIZU 1.7 NM to RW17	3200	3200	3300	
3200	2120	3200	3300	
1.7 NM	3.3 NM	6.1 NM		
3300	HINTA	COXAK	4 NM Holding Pattern	
↑	✧			
EFIZU 1.7 NM to RW17	3200	3200	3300	
3200	2120	3200	3300	
1.7 NM	3.3 NM	6.1 NM		
3300	HINTA	COXAK	4 NM Holding Pattern	
↑	✧			
EFIZU 1.7 NM to RW17	3200	3200	3300	
3200	2120	3200	3300	
1.7 NM	3.3 NM	6.1 NM		
3300	HINTA	COXAK	4 NM Holding Pattern	
↑	✧			
EFIZU 1.7 NM to RW17	3200	3200	3300	
3200	2120	3200	3300	
1.7 NM	3.3 NM	6.1 NM		
3300	HINTA	COXAK	4 NM Holding Pattern	
↑	✧			
EFIZU 1.7 NM to RW17	3200	3200	3300	
3200	2120	3200	3300	
1.7 NM	3.3 NM	6.1 NM		
3300	HINTA	COXAK	4 NM Holding Pattern	
↑	✧			
EFIZU 1.7 NM to RW17	3200	3200	3300	
3200	2120	3200	3300	
1.7 NM	3.3 NM	6.1 NM		
3300	HINTA	COXAK	4 NM Holding Pattern	
↑	✧			
EFIZU 1.7 NM to RW17	3200	3200	3300	
3200	2120	3200	3300	
1.7 NM	3.3 NM	6.1 NM		
3300	HINTA	COXAK	4 NM Holding Pattern	</

APP CRS
354°
Rwy Idg **3707**
TDZE **1560**
Apt Elev **1561**

RNAV (GPS) RWY 35

ARLEDGE FLD (F56)

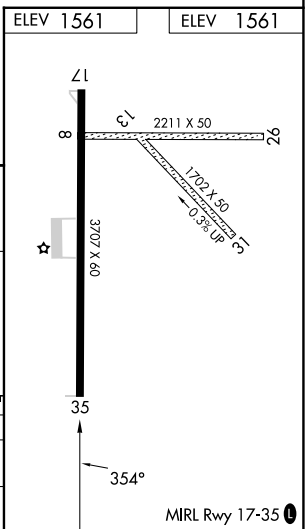
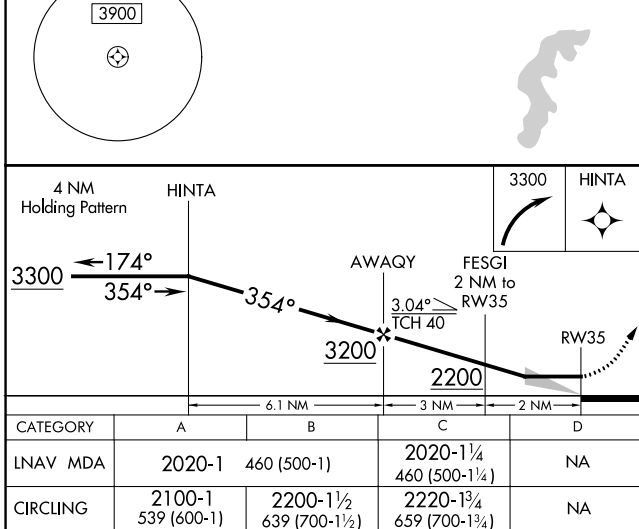
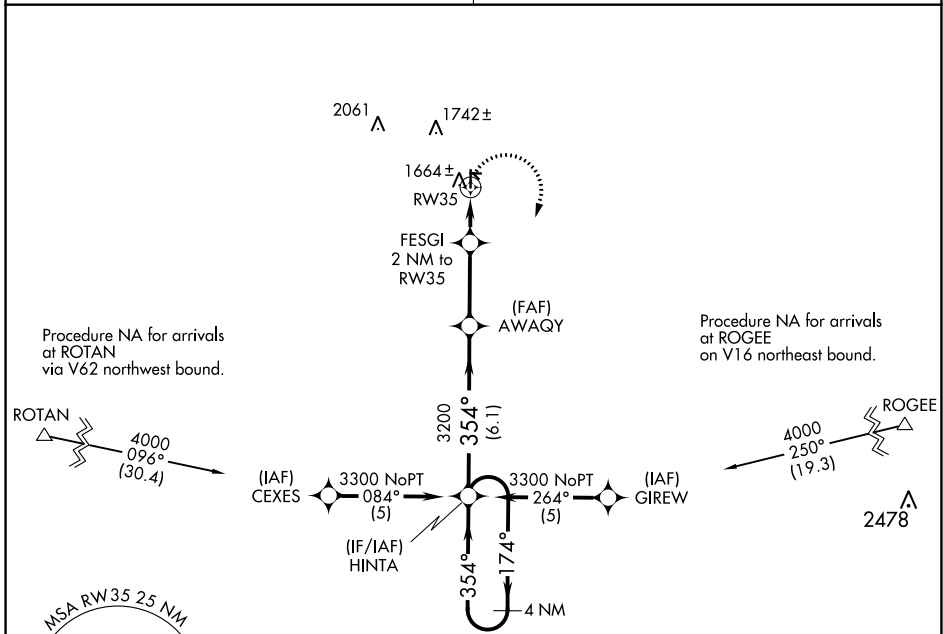
RNP APCH-GPS

▽ Use Abilene Rgnl altimeter setting; when not received use Breckenridge altimeter setting and increase all MDAs 40 feet and visibility Cat C ¼ SM.
▲ NA Procedure NA at night.

MISSED APPROACH: Climbing right turn to 3300 direct HINTA and hold.

ABILENE APP CON
127.2 282.3

UNICOM
122.8 (CTAF) 0



SC-2, 22 FEB 2024 to 21 MAR 2024

SC-2, 22 FEB 2024 to 21 MAR 2024