

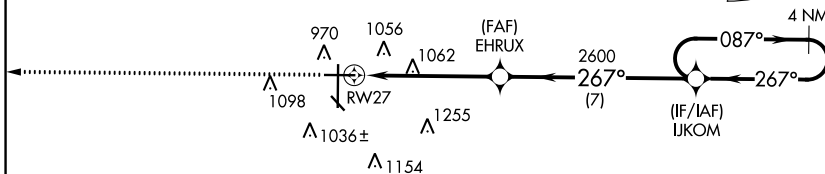
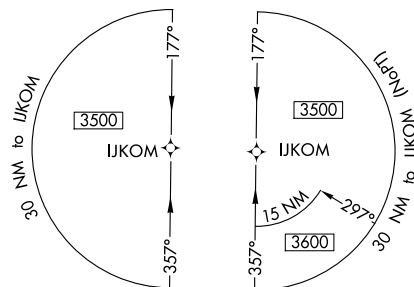
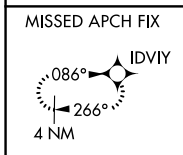
WAAS CH <b>65733</b> <b>W27A</b>	APP CRS <b>267°</b>	Rwy Idg <b>6302</b> TDZE <b>899</b> Apt Elev <b>901</b>
--	------------------------	---

# RNAV (GPS) RWY 27

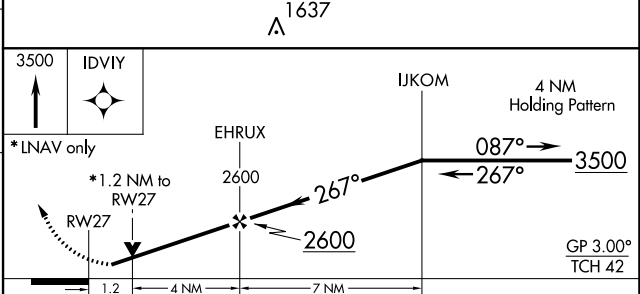
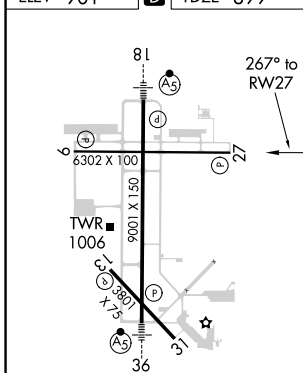
HECTOR INTL (F.A.R.)

RNP APCH.	MISSED APPROACH: Climb to 3500 direct IDVIY and hold.
Baro-VNAV NA. Rwy 27 helicopter visibility reduction below 3/4 SM NA.	

ATIS <b>124.5 379.2</b>	FARGO APP CON <b>120.4 377.15</b>	FARGO TOWER <b>133.8 290.4</b>	GND CON <b>121.9 348.6</b>	CLNC DEL <b>121.9 348.6</b>
----------------------------	--------------------------------------	-----------------------------------	-------------------------------	--------------------------------



ELEV 901 **D** TDZE 899



CATEGORY	A	B	C	D
LPV DA		1149-3/4	250 (300-3/4)	
LNAV/VNAV DA		1231-1/8	332 (400-1/8)	
LNAV MDA	1320-1	421 (500-1)	1320-1/4	421 (500-1/4)
<b>C</b> CIRCLING	1380-1	479 (500-1)	1520-1/4 619 (700-1/4)	1620-2/4 719 (800-2/4)

HIRL Rwy 18-36  
REIL Rwy 9 and 27  
MIRL Rwy 9-27 and 13-31

NC-1, 22 FEB 2024 to 21 MAR 2024

NC-1, 22 FEB 2024 to 21 MAR 2024