

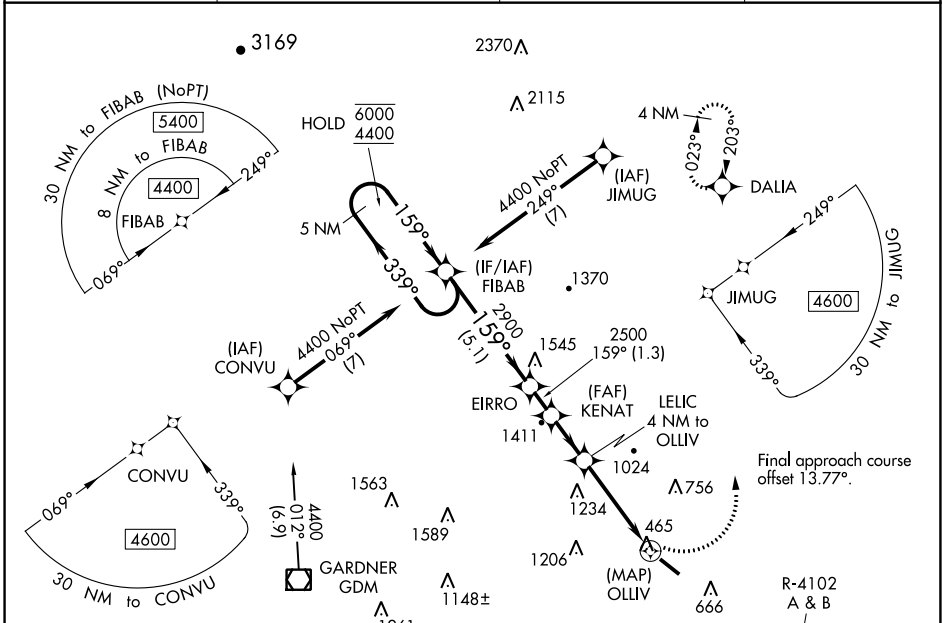
APP CRS	Rwy Idg	<b>4538</b>
<b>159°</b>	TDZE	<b>344</b>
	Apt Elev	<b>345</b>

# RNAV (GPS) RWY 14

FITCHBURG MUNI (FIT)

RNP APCH.	MISSED APPROACH: Climbing left turn to 3500 direct DALIA and hold.
<p>▼ Rwy 14 helicopter visibility reduction below ¾ SM NA.                  ▲ Circling NA southwest of Rwy 14-32 at night.                  ❄️ -22°C</p>	

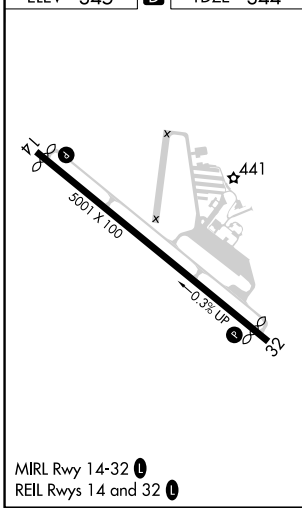
ASOS <b>135.175</b>	BOSTON APP CON <b>124.4 279.6</b>	UNICOM <b>122.7 (CTAF)</b>	<b>123.0</b>
------------------------	--------------------------------------	-------------------------------	--------------



NE-1, 22 FEB 2024 to 21 MAR 2024

NE-1, 22 FEB 2024 to 21 MAR 2024

ELEV 345	<b>D</b>	TDZE 344
----------	----------	----------



Procedure NA for arrival on GDM VOR/DME airway radials 339 CW 042.

	5 NM Holding Pattern	FIBAB	Visual Segment - Obstacles.	3500	DALIA
	6000 ← 339°				
	4400 → 159°				
		2900			
		2500			
		1860			
			2.7 NM to OLLIV		
			OLLIV		
			0.5		
			2.7		
			1.3		
			2		
			1.3		
			5.1 NM		

CATEGORY	A	B	C	D
LNAV MDA	1420-1¼ 1076 (1100-1¼)	1420-1½ 1076 (1100-1½)	1420-3 1076 (1100-3)	NA
<b>C</b> CIRCLING	1420-1¼ 1075 (1100-1¼)	1420-1½ 1075 (1100-1½)	1520-3 1175 (1200-3)	NA