

WAAS CH <b>45718</b> <b>W03A</b>	APP CRS <b>031°</b>	Rwy Idg TDZE Apt Elev	<b>8800</b> <b>7014</b> <b>7014</b>
--	------------------------	-----------------------------	---

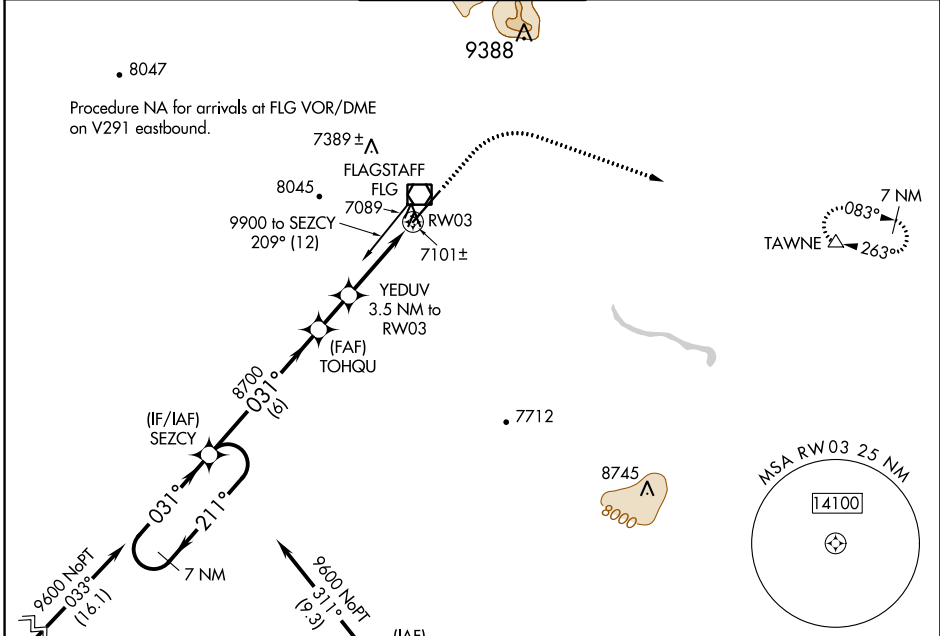
# RNAV (GPS) RWY 3

FLAGSTAFF PULLIAM (FLG)

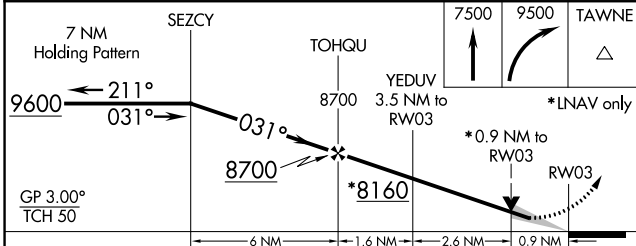
**⚠** For uncompensated Baro-VNAV systems, LNAV/VNAV NA below -19°C (-2°F) or above 44°C (112°F).  
**⚠** DME/DME RNP-0.3 NA.

MISSED APPROACH: Climb to 7500 then climbing right turn to 9500 direct TAWNE and hold.

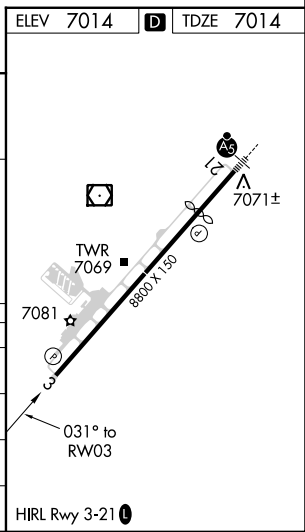
ATIS <b>125.8</b>	PHOENIX APP CON <b>126.375 236.775</b>	FLAGSTAFF TOWER ★ <b>134.55 (CTAF) 0 239.25</b>	GND CON <b>121.9</b>	UNICOM <b>122.95</b>
----------------------	---	--	-------------------------	-------------------------



ELEV 7014	<b>D</b> TDZE 7014
-----------	--------------------



CATEGORY	A	B	C	D
LPV DA		7264- <sup>3</sup> / <sub>4</sub>	250 (300- <sup>3</sup> / <sub>4</sub> )	
LNAV/VNAV DA		7282- <sup>7</sup> / <sub>8</sub>	268 (300- <sup>7</sup> / <sub>8</sub> )	
LNAV MDA		7360-1	346 (400-1)	
<b>C</b> CIRCLING	7520-1 506 (600-1)	7560-1 546 (600-1)	8100-3 1086 (1100-3)	8560-3 1546 (1600-3)



SW-4, 22 FEB 2024 to 21 MAR 2024

SW-4, 22 FEB 2024 to 21 MAR 2024