

NDB FMZ <b>392</b>	APP CRS <b>001°</b>	Rwy Idg TDZE <b>1636</b> Apt Elev <b>1636</b>
-----------------------	------------------------	---

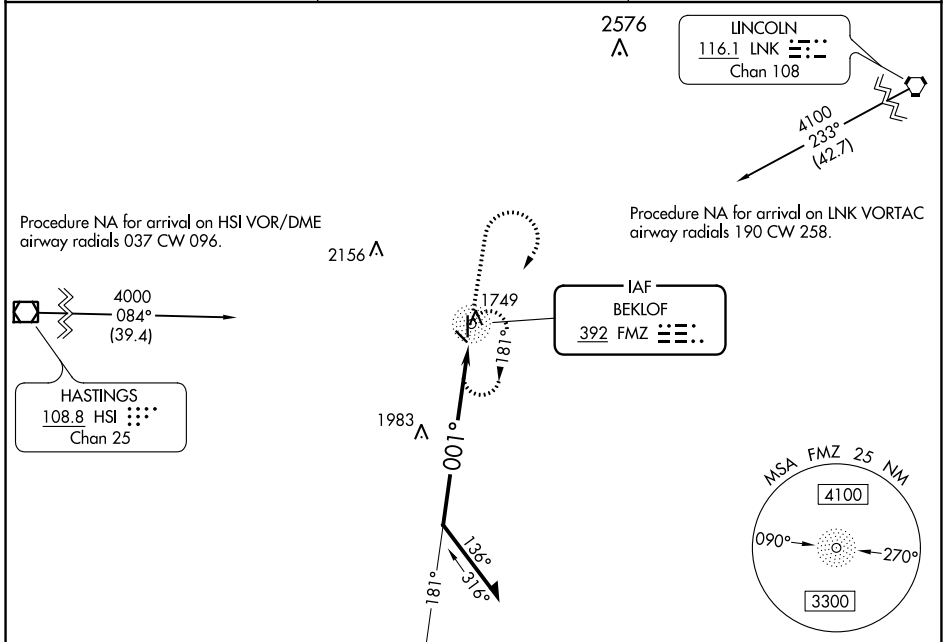
# NDB RWY 35

FAIRMONT STATE (F'MZ)

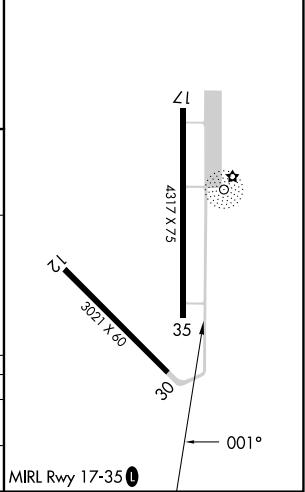
**⚠** Circling Rwy 12, 30 NA at night.  
**⚠** NA Use York altimeter setting, when not received use Hebron altimeter setting and increase all MDA 40 feet and Circling Cat A visibility ¼ SM.

MISSED APPROACH: Climb to 3200 then right turn direct FMZ NDB and hold.

JYR AWOS-3 <b>124.175</b>	MINNEAPOLIS CENTER <b>119.4 278.8</b>	CTAF <b>122.90</b>
------------------------------	--	-----------------------



ELEV 1636	TDZE 1636
-----------	-----------



	3200	181°	001°
--	------	------	------

CATEGORY	A	B	C	D
S-35	2420-1 784 (800-1)	2420-1¼ 784 (800-1¼)	NA	
<b>C</b> CIRCLING	2420-1 784 (800-1)	2420-1¼ 784 (800-1¼)	NA	

NC-2, 22 FEB 2024 to 21 MAR 2024

NC-2, 22 FEB 2024 to 21 MAR 2024